



TUNITAS CREEK BEACH IMPROVEMENT PROJECT

UPDATED PROJECT DESIGN

October 2020





INTRODUCTION



About the Project

Tunitas Creek Beach will become San Mateo County's newest park! The site is 58 acres, with lots of interesting history, incredible views, and a huge beach. In order to ensure the property functions safely and is protected for future visitors, we are working with the community to create adequate parking facilities, restrooms, trail access to the beach, ranger facilities, and an iconic overlook area.

Project Progress

In May, the project team posted a **general survey** to gather information about where respondents are from, what their values are, and how they use Tunitas Creek Beach.

Shortly after, we presented information and graphics about the existing conditions of the site and **three proposed design scenarios**. Through July and August, the team collected input and feedback on the direction of the alternatives. The feedback was used to **further refine project priorities**.

Where We Stand Today

This presentation will:

1. Summarize what we heard from the community
2. Review our updated priority improvements for the project
3. List potential additional features to be added to the project

We hope to gather **another round of feedback** from a diverse audience of tribal organizations, coastal communities, youth groups, and other interested community members regarding our priority improvements and potential opportunities for Tunitas Creek Beach. Please respond to our feedback survey at tunitascreekbeach.org and attend our virtual community meetings on October 21 (English) and October 22 (Spanish)!

1. WHAT WE HEARD

2. PRIORITY IMPROVEMENTS

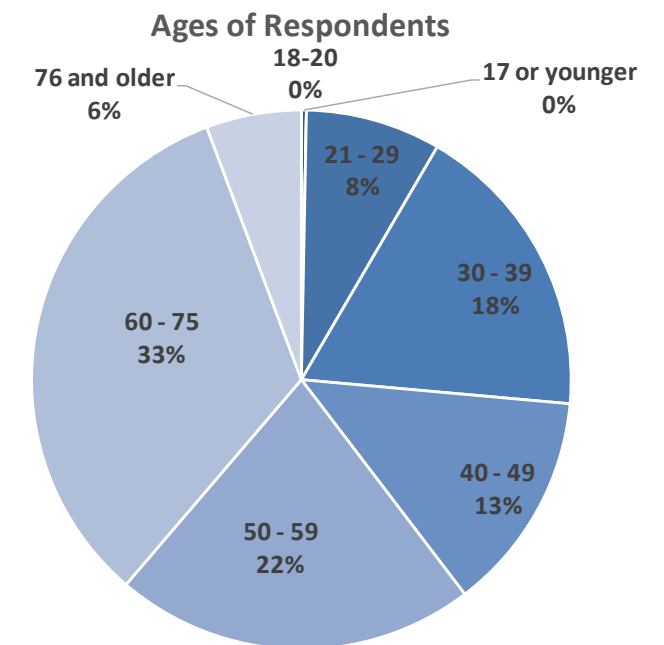
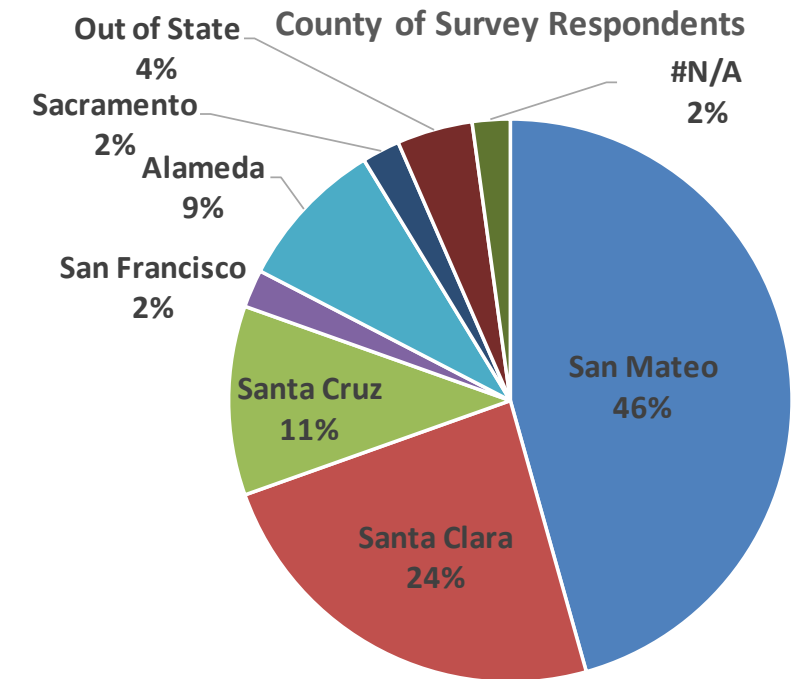
3. POTENTIAL ADDITIONAL KEY FEATURES





WHAT WE HEARD: GENERAL SURVEY

- 366 respondents
- People come to Tunitas to **walk, relax, picnic, and enjoy the views.**
- Most people get to Tunitas by **car**, a few by bike, even fewer by public transit.
- Most people go with **1-2** other friends and family.
- Nearly 90% of respondents prefer **peace and quiet** to excitement and activities.
- Respondents prioritized **preserving the landscape (86%)** and **birds and wildlife (63%)** over good parking and access (40%) and amenities like picnic tables, visitor center, and benches (25%).
- Respondents would largely like to **keep the site natural** but do see potential for improved accessibility, safer trails, and historical educational about the site.





WHAT WE HEARD: ALTERNATIVES

ALTERNATIVE 1

Minimum improvements to get the park open and stabilize sensitive landscapes

- Designated drop-off area
- Paved walkway and overlook at top of bluff
- Snowy plover bird habitat protection area
- Public restroom at mid-bluff
- Pedestrian trail to the mid-bluff
- Ranger station
- Existing maintenance facility

ALTERNATIVE 2

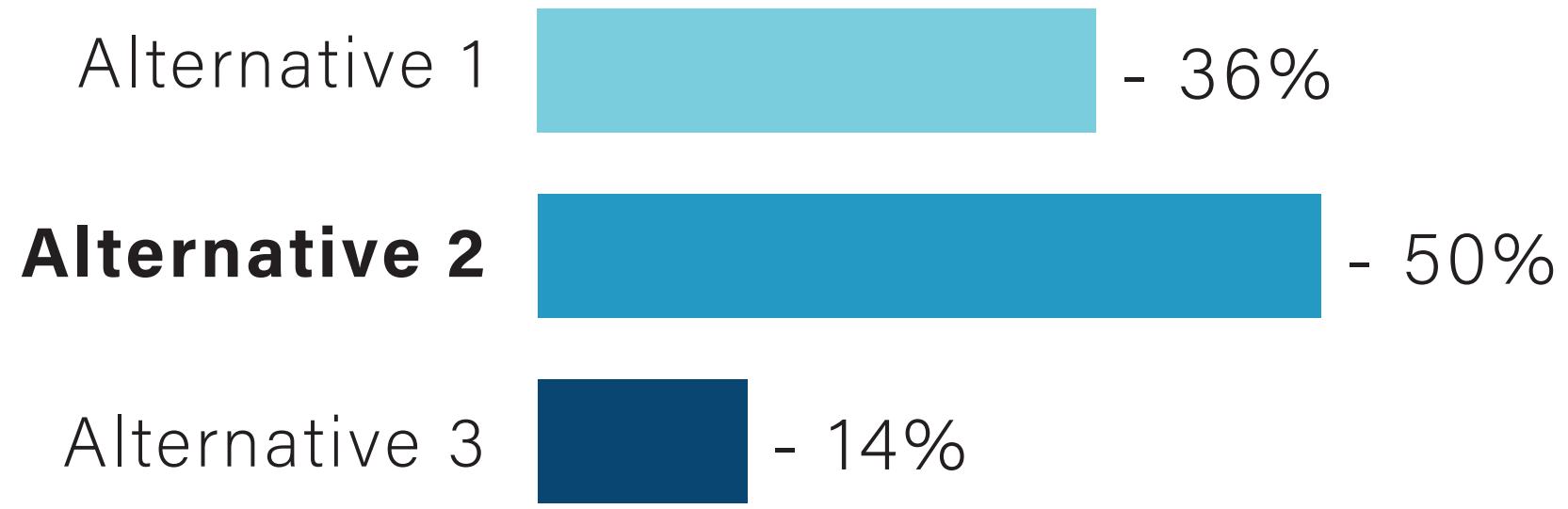
Additional improvements to enhance operations, user experience and site restoration

- Bus/RV parking
- Overhead shade structure at overlooks
- Boardwalk on the beach through habitat protection area
- ADA accessible ramp to the mid-bluff
- Mid-bluff overlook to Mussel Rock
- Loop trail
- Seating and overlook along loop trail
- Ranger residence

ALTERNATIVE 3

Full build-out for maximum user experience and habitat enhancement

- Cantilevered overlook at the top of the bluff
- Picnic pavilion with overhead shade structure
- Beach deck with shade structure
- Natural play features/nature play trail
- Paved mid-bluff overlook and seat wall
- Group camping pods
- Visitor center with restrooms and picnic patio
- Maintenance facility



Overall, the majority of respondents find alternative 2 or a mix of alternative 1 and 2 to be the most appropriate level of development for Tunitas Creek Beach.



WHAT WE HEARD: ALTERNATIVES

ALTERNATIVE 1

What people **like most** about this alternative:

- Minimal development and cost
- Quickest opening
- Safety
- Parking
- Overlook

What people wish to see **change** in this alternative:

- Better access and trails
- Add ranger residence, loop trail, and better ADA accessibility
- More environmental protection and restoration
- Less parking (though a few suggested more parking)

ALTERNATIVE 2

What people **like most** about this alternative:

- Good balance between 1 and 3
- ADA access
- Loop trail
- Plover protection and boardwalk
- Habitat protection
- Ranger station and residence

What people wish to see **change** in this alternative:

- More protection and restoration
- Too much development
- Remove boardwalk through plover habitat
- Less parking (some suggested transit option as alternative)
- Add camping option
- ADA access to the beach

ALTERNATIVE 3

What people **like most** about this alternative:

- Added habitat protection
- ADA Access
- Camping opportunity
- Educational possibilities

What people wish to see **change** in this alternative:

- Too much development
- Remove large group campground
- Remove visitor center
- Fewer paved surfaces
- Remove play spaces



WHAT WE HEARD: ALTERNATIVES

"**Minimal structures** and changes to accommodate people, but not overpopulate the site"



"Excited about **loop trail** and connections to **regional biking trails** along the coast"



"**More access.** Beaches need to be for all people"



"Might be good to have a **ranger residence** for a variety of reasons: enforcement, safety, etc."



"More **native plant restoration** and active maintenance of restored habitats"



"I love the additional **ADA access**"



"Visitor center has opportunity for **learning about indigenous people** of the area"



"Provide **safe erosion-limited access** to beach, discourage/prevent need for creek and bluff access routes"



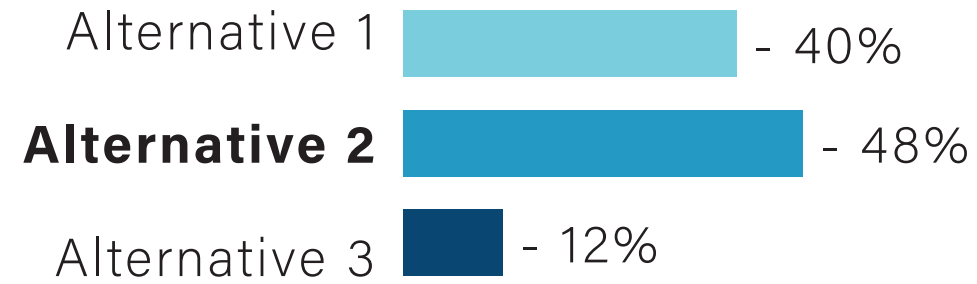
"I don't really see the need for a visitor center"



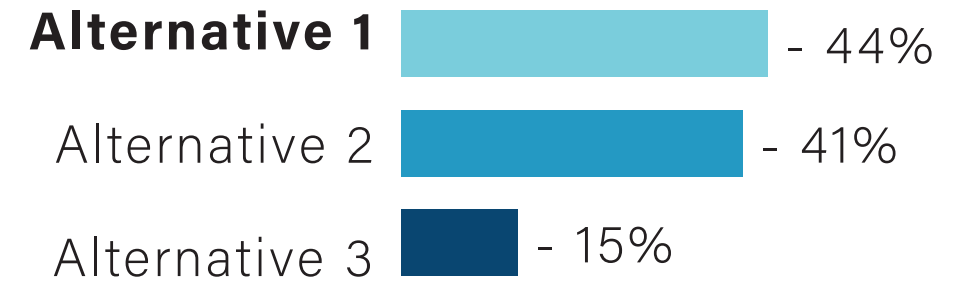


WHAT WE HEARD: ALTERNATIVES

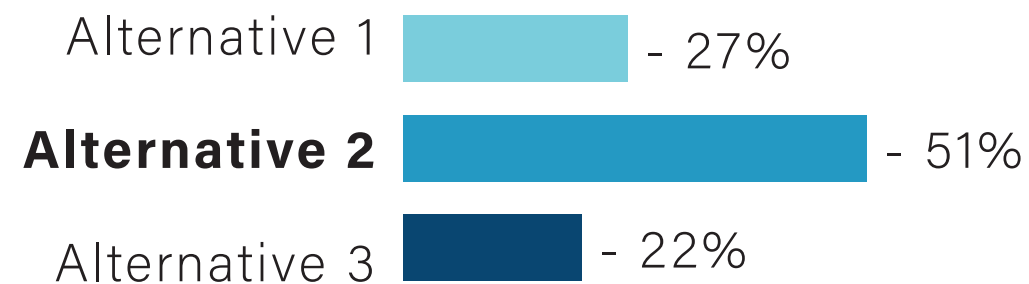
Which level of development do you feel is most appropriate for Tunitas Creek Beach?



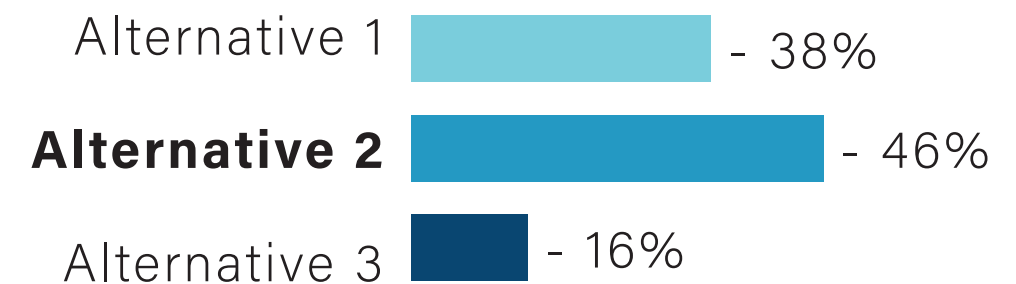
Parking: Which alternative shows what you think is the right amount of parking development?



Accessibility: Which alternative do you think shows the most appropriate amount of development related to user access, considering parkgoers of all abilities?



Buildings: What level of structures and physical improvements do you want to see at Tunitas?





WHAT WE HEARD: DESIGN ELEMENTS

Overall, which design elements should be **PRIORITIZED** for when the park first opens?



Designated drop-off area

17%



Bus/RV parking

2%



Paved walkway and overlook at the top of the bluff

28%



Cantilevered overlook at the top of the bluff

2%



Overhead shade structures at overlooks and picnic area

2%



Snowy plover bird habitat protection area

65%



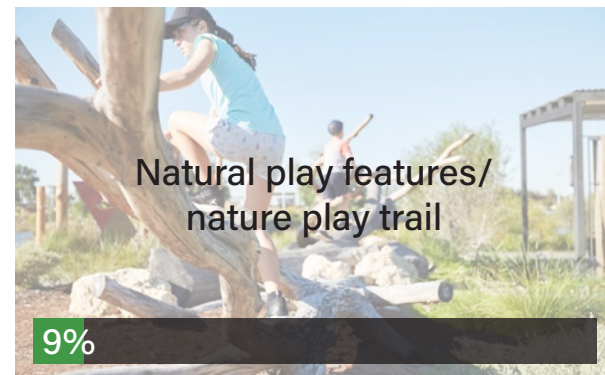
Boardwalk on the beach through habitat protection area

20%



Beach deck with shade structure

1%



Natural play features/nature play trail

9%



Public restroom at mid-bluff

69%



Pedestrian trail to the mid-bluff

48%



ADA accessible ramp to the mid-bluff

28%



Paved mid-bluff overlook and feature seat wall

6%



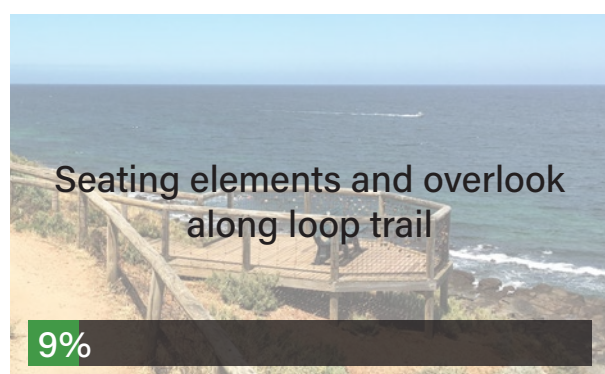
Mid-bluff overlook to Mussel Rock (southern bluffs)

7%



Loop trail

47%



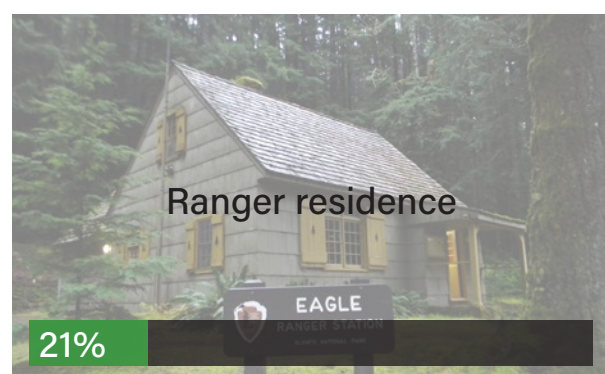
Seating elements and overlook along loop trail

9%



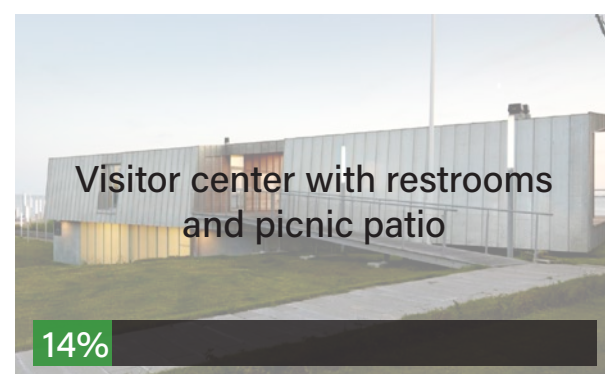
Group camping pods

5%



Ranger residence

21%



Visitor center with restrooms and picnic patio

14%



Maintenance facility

24%



WHAT WE HEARD: DESIGN ELEMENTS

Overall, which design elements are NOT appropriate for Tunitas Creek Beach?



Designated drop-off area

12%



Bus/RV parking

61%



Paved walkway and overlook at the top of the bluff

12%



Cantilevered overlook at the top of the bluff

61%



Overhead shade structures at overlooks and picnic area

57%



Snowy plover bird habitat protection area

3%



Boardwalk on the beach through habitat protection area

35%



Beach deck with shade structure

67%



Natural play features/nature play trail

32%



Public restroom at mid-bluff

6%



Pedestrian trail to the mid-bluff

2%



ADA accessible ramp to the mid-bluff

10%




Paved mid-bluff overlook and feature seat wall

30%



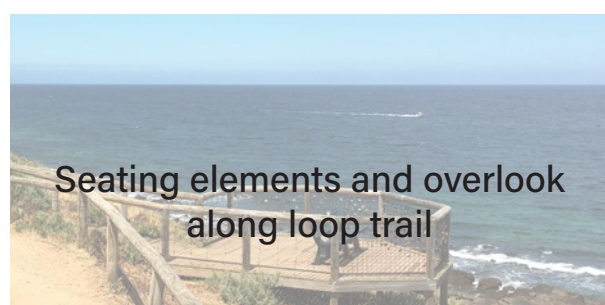
Mid-bluff overlook to Mussel Rock (southern bluffs)

14%



Loop trail

6%



Seating elements and overlook along loop trail

16%



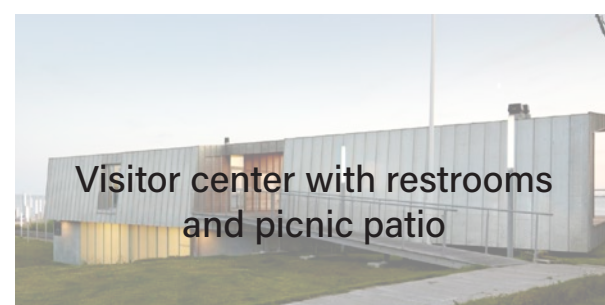
Group camping pods

67%



Ranger residence

31%



Visitor center with restrooms and picnic patio

40%

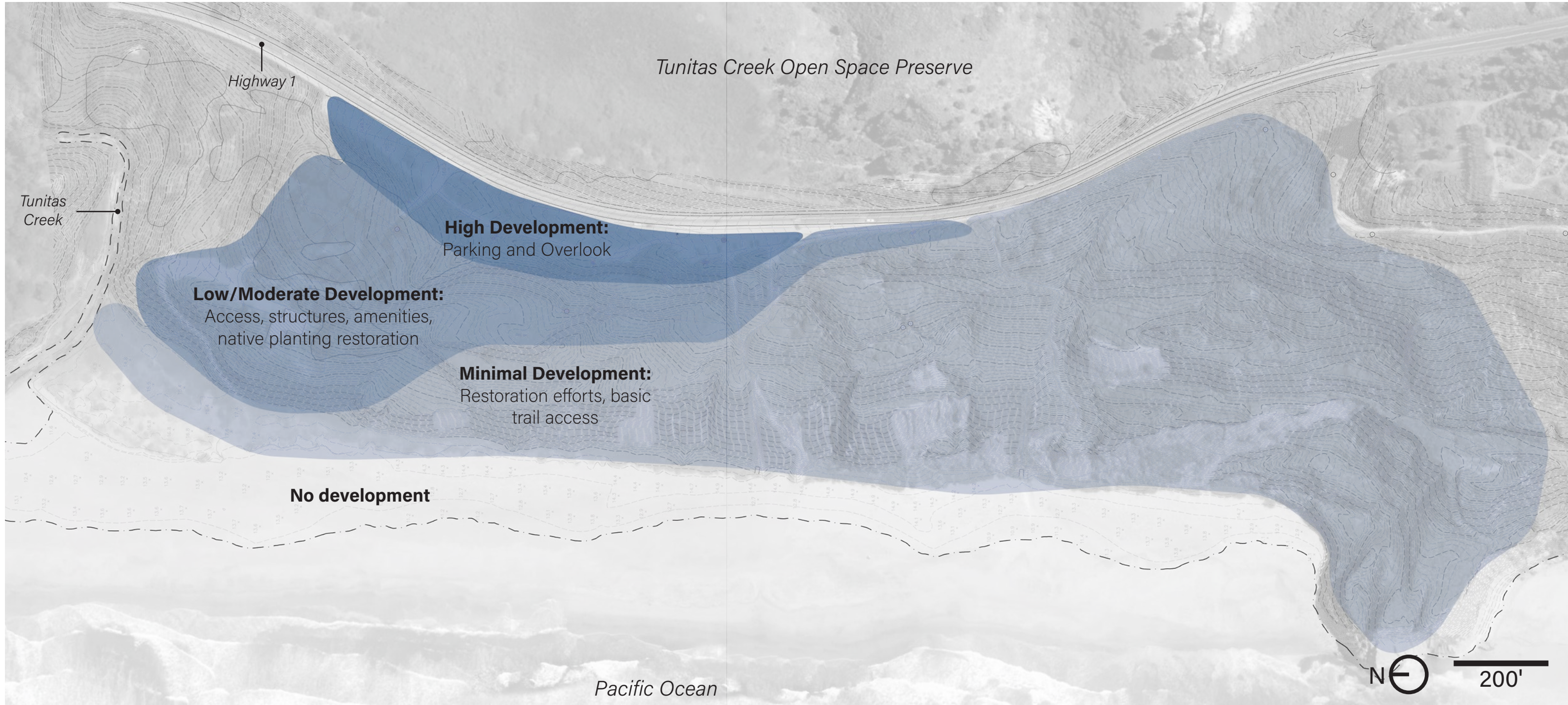


Maintenance facility

10%



WHAT WE HEARD: DEVELOPMENT



Respondents are more comfortable with development at the top of the bluff rather than closer to the beach. The design team is using the above gradient to approach the updated design moving forward.



PROJECT FACTORS

In revising the Project Alternatives, the team considered **the following factors**:

- **Public input** - all comments were read, considered, and recorded. Significant patterns and values that emerged were flagged for evaluation and careful consideration for incorporation into the design alternatives.
- The **core values** established in the Community Advisory Committee's Vision Report
- **Feasibility and cost** of implementation and management of proposed improvements
- The improvement's impact on the County's ability to **efficiently and effectively manage the Property** as a County park
- Permitting requirements and regulatory constraints
- **Time** needed to construct the improvements
- Impacts to **natural and cultural resources**
- The expertise of the project design professionals
- Impacts on **user experience**

1. WHAT WE HEARD

2. PRIORITY IMPROVEMENTS

3. POTENTIAL ADDITIONAL KEY FEATURES



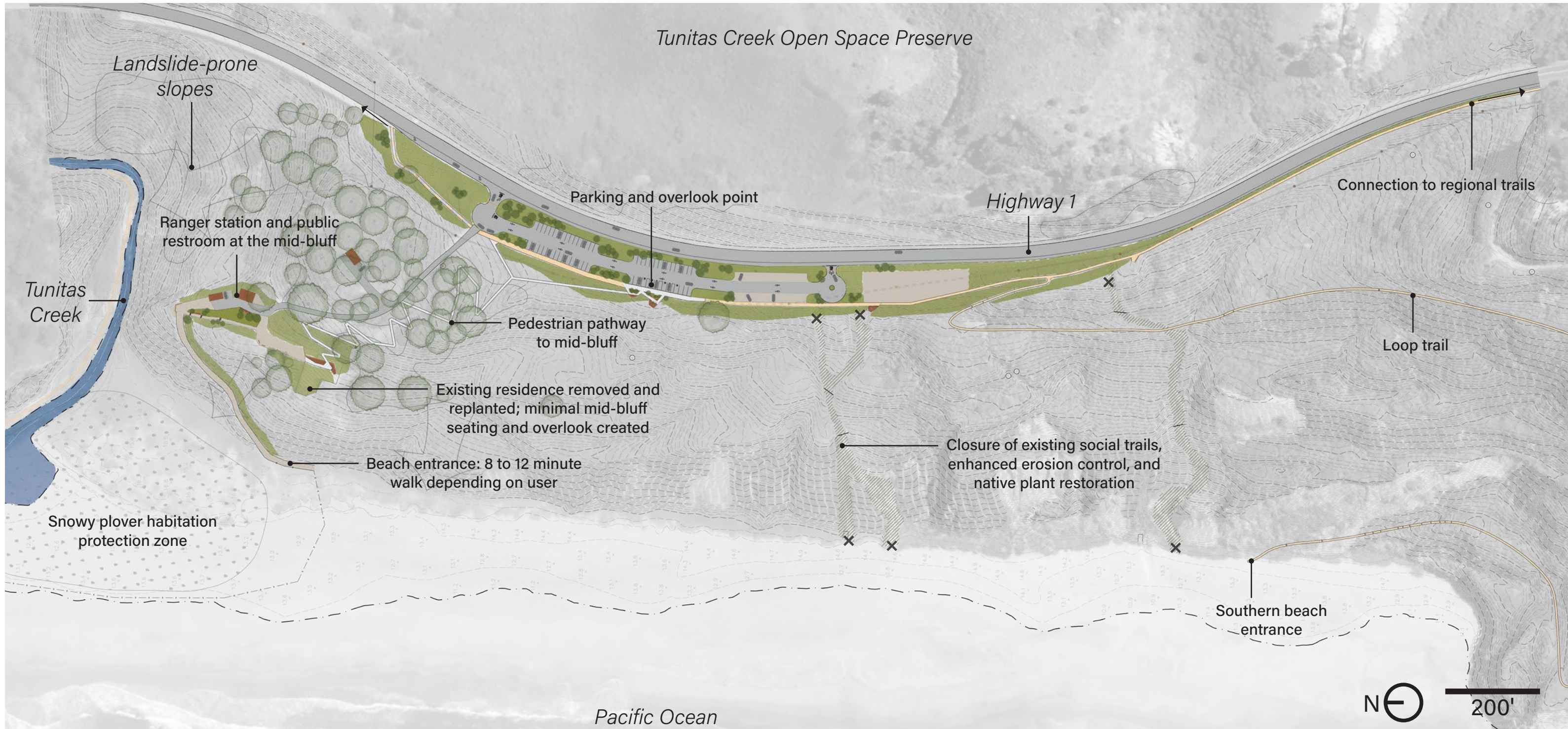


EXISTING SITE





PRIORITY IMPROVEMENTS



The elements shown here have been prioritized as key improvements to create a baseline for a **safe, accessible, and enjoyable** Tunitas Creek Beach experience.



PRIORITY IMPROVEMENTS



ENVIRONMENTAL PROTECTION

The project improves the environment and leads to enhanced stewardship.



EQUITY AND INCLUSION

Diverse and non-traditional communities are involved during project development.



EDUCATION AND AWARENESS

History and nature knowledge are made accessible through meaningful interpretation.

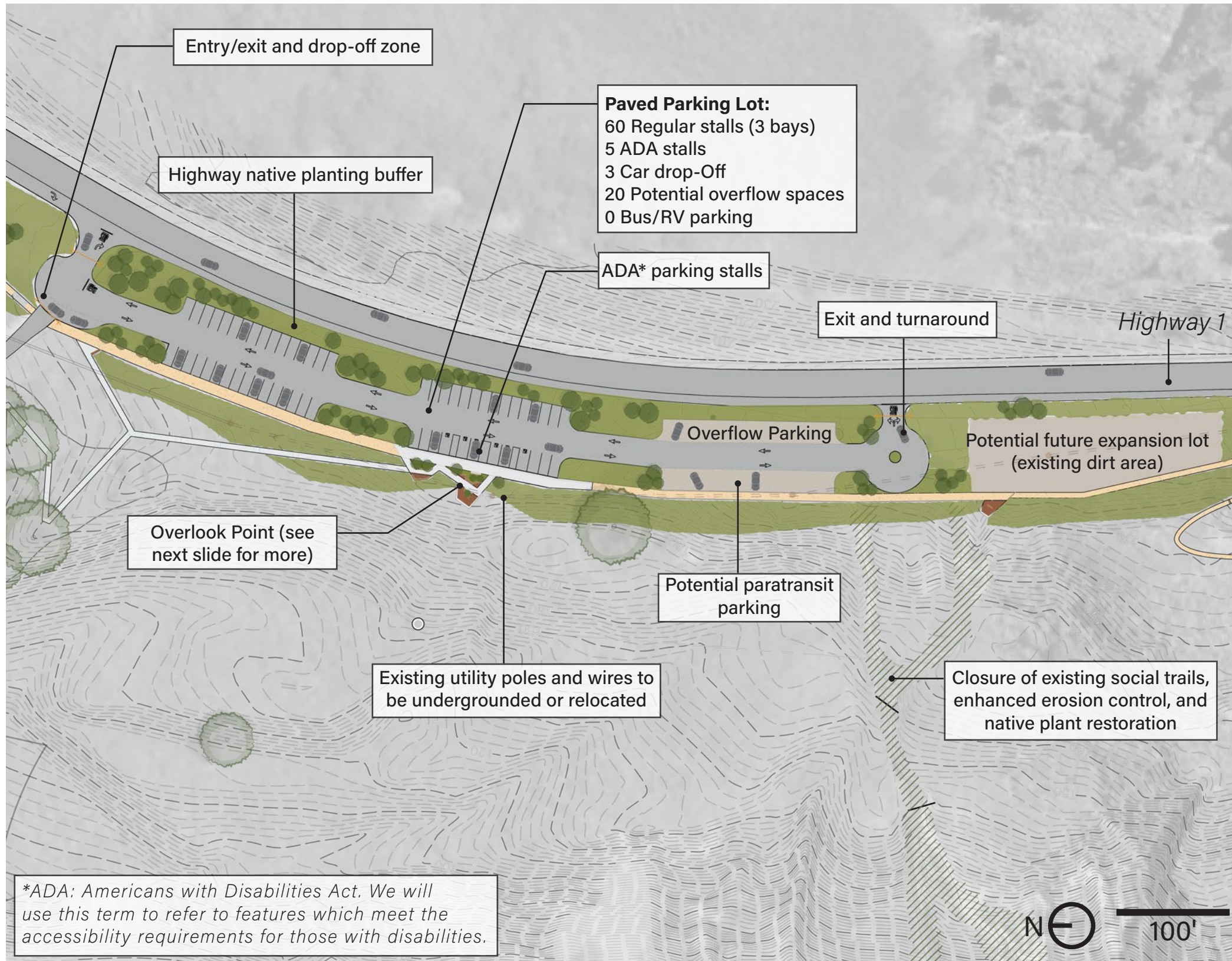


OUTDOOR EXPERIENCES

A variety of recreational experiences are available, from vista point to day at the beach.

Existing outreach efforts have centered the project around **four core values**. Flip through the following pages to see how each key feature relates to these project values.

PARKING CONDITION



What is the parking situation today?

- Currently, most cars park in the informal roadside dirt lot at the top of the bluff. Up to **60 cars** park here at a time on the busiest days of the week.
- The project team would like to avoid visitors parking on Tunitas Creek Road for safety reasons and out of respect for the neighbors of Tunitas Creek Beach; therefore, **adequate parking will be necessary** on site. A drop-off zone will provide additional options for arrival.

How does this feature impact the four core values of the Tunitas Creek Beach Improvement Project?

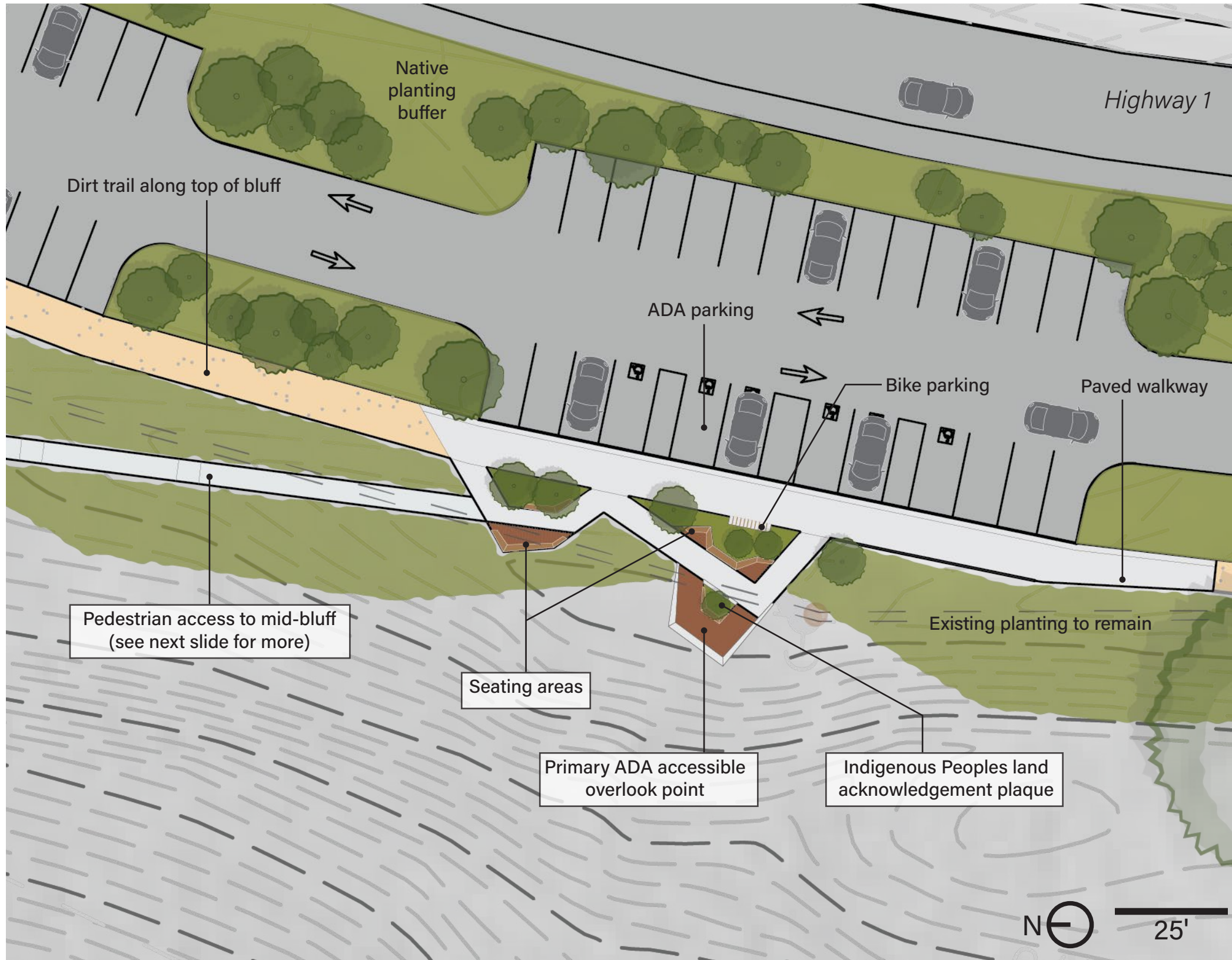
- **Environment:** Some existing vegetation will be removed to create a paved parking lot, but many areas will also be replanted with native vegetation. Necessary **stormwater management and erosion control** measures will be taken to avoid significant impact to existing topography and vegetation.
- **Equity:** Sufficient **ADA parking**, bike accommodations, and a potential paratransit parking will be provided.
- **Education:** Potential for education regarding stormwater management features, as well as opportunities for information about the site, wildlife, and human history.
- **Experiences:** Parking and drop-off area will provide an **easy and safe arrival experience** for all visitors. The potential undergrounding of the existing utility wires will create an unobstructed viewing experience.



Location of Future Parking Lot



OVERLOOK POINT



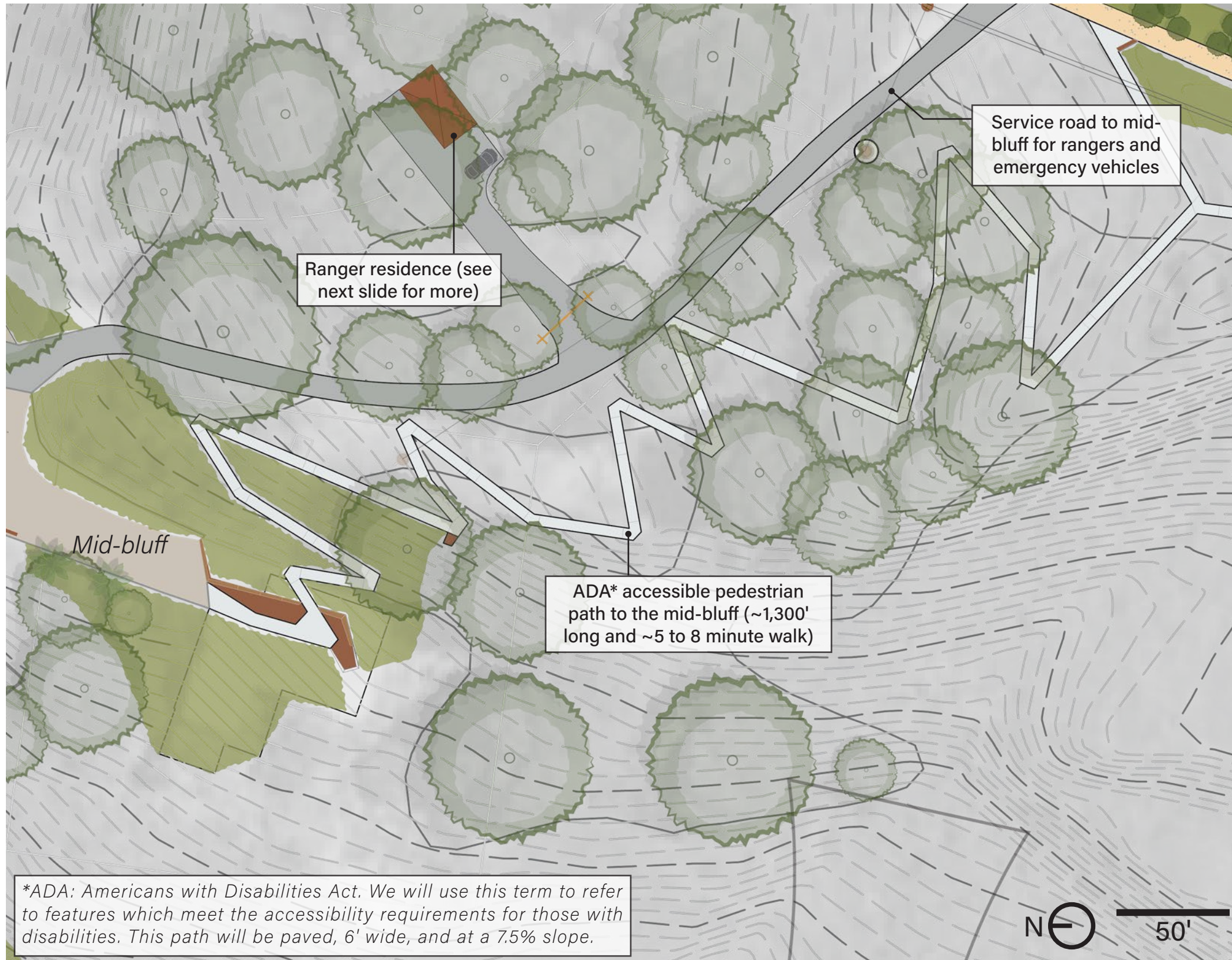
How does this feature impact the four core values of the Tunitas Creek Beach Improvement Project?

- **Environment:** While the overlook will contain paving, it will not extend beyond the existing extents of the current disturbed area.
- **Equity:** This overlook will be **accessible to everyone** and provide an opportunity for some signage and other design features discussing the history and culture of the site.
- **Education:** An **Indigenous Peoples land acknowledgement** plaque will educate visitors on the human history at Tunitas Creek Beach.
- **Experiences:** This will provide an **iconic and memorable overlook** experience for both the local community and visitors driving along Highway 1.



Overlook Point

PEDESTRIAN ACCESS



Why is ADA Access Important?

- Having an ADA-compliant pathway to the mid-bluff experience will ensure **all users** can use all of the amenities found at the mid-bluff.
- Respondents to our public survey expressed overwhelming support for this ADA access.

How does this feature impact the four core values of the Tunitas Creek Beach Improvement Project?

- **Environment:** The path will largely be built on or closely adjacent to already-disturbed areas and will be regraded with minimal impact.
- **Equity:** This pathway will provide all users with access to the mid-bluff.
- **Education:** Features along the path provide opportunities for education about the site, wildlife, and human history.
- **Experiences:** This pathway will provide an additional entry and viewing experience away from Highway 1 in a more natural setting.



Example ADA Ramp Through Vegetation

RANGER RESIDENCE



The Ranger Residence

- Many respondents to the public survey expressed interest in having a **24-hour ranger presence** to enforce protection of the site and its wildlife. The ranger residence will be located in the Cypress grove, close enough to monitor beach activity while still providing adequate privacy for the resident.

How does this feature impact the four core values of the Tunitas Creek Beach Improvement Project?

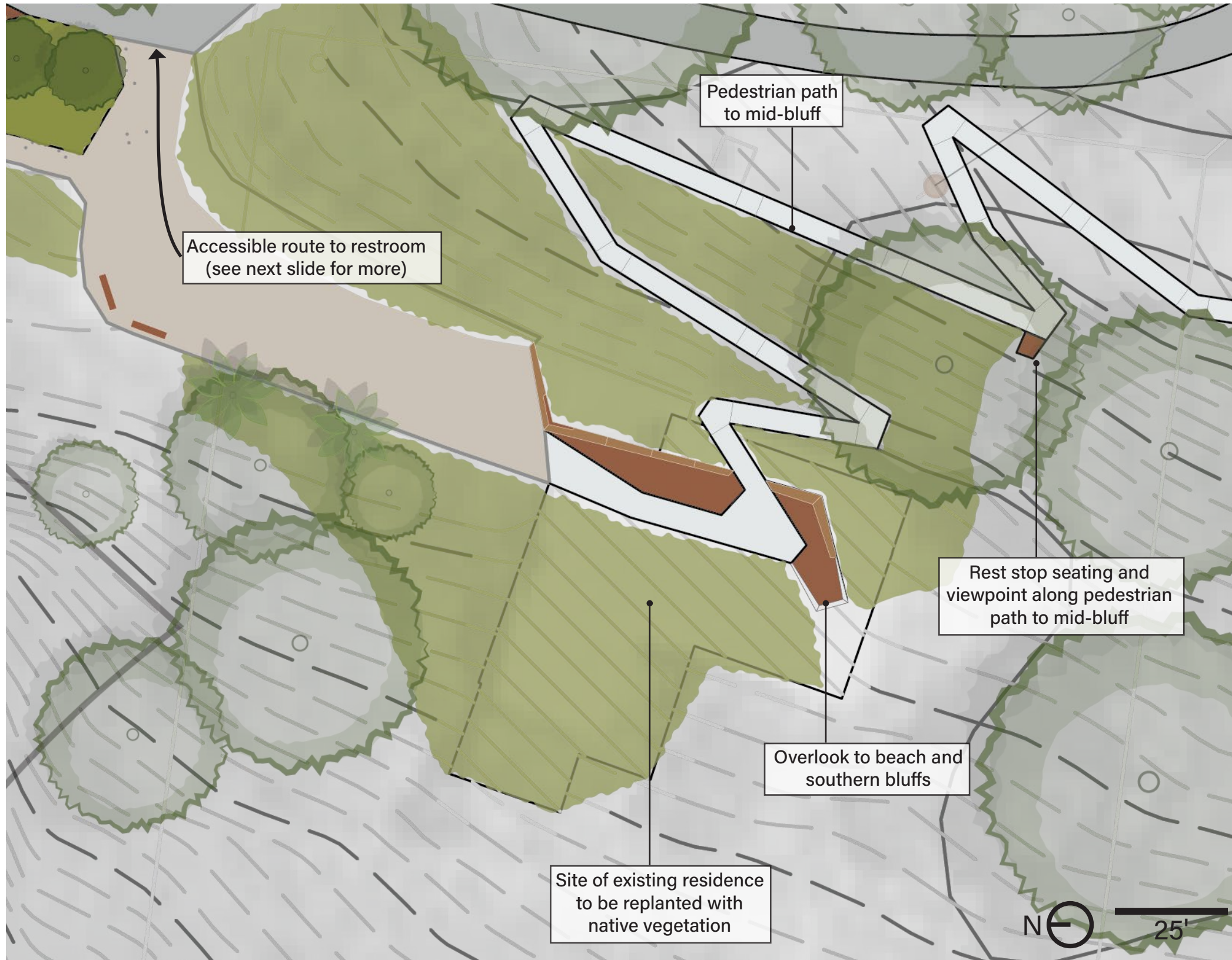
- Environment:** The residence will be placed near the location of an existing maintenance shed and driveway, minimizing environmental impacts. On-site ranger presence will help reduce after-hours activity including poaching.
- Equity:** The ranger residence presents an opportunity for active outreach to communities to enjoy Tunitas Creek Beach, as well as protection of cultural features at the site at all times.
- Education:** Minimal impact.
- Experiences:** The location of the residence will enhance the experience for the ranger and aid in protecting the site's natural resources for future generations.



Example of Small Ranger Residence



MID-BLUFF FEATURES

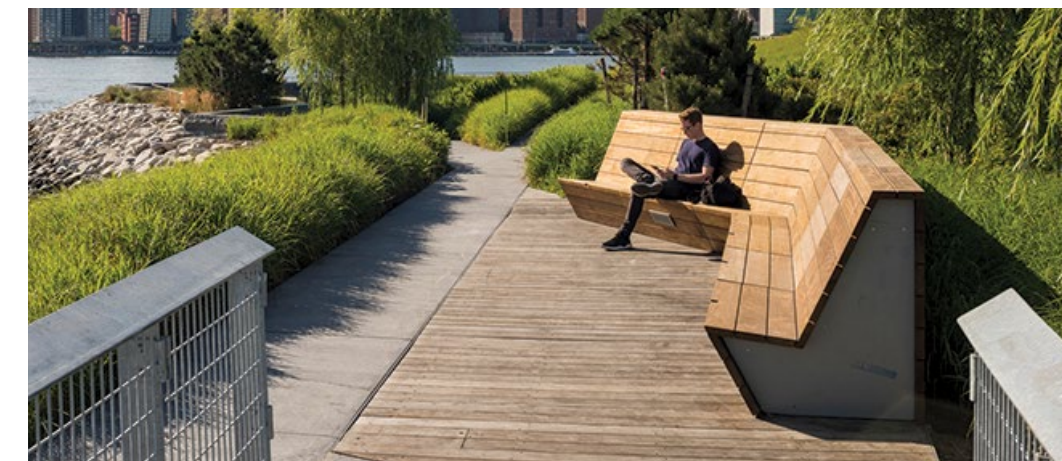


Mid-bluff Seating and Overlooks

- The project team hopes to make the mid-bluff into an overlook destination and rest stop for all users to enjoy.
- The existing residence will be **removed and largely replanted** with native vegetation, but the area also provides an opportunity for an overlook and educational experience closer to the beach.

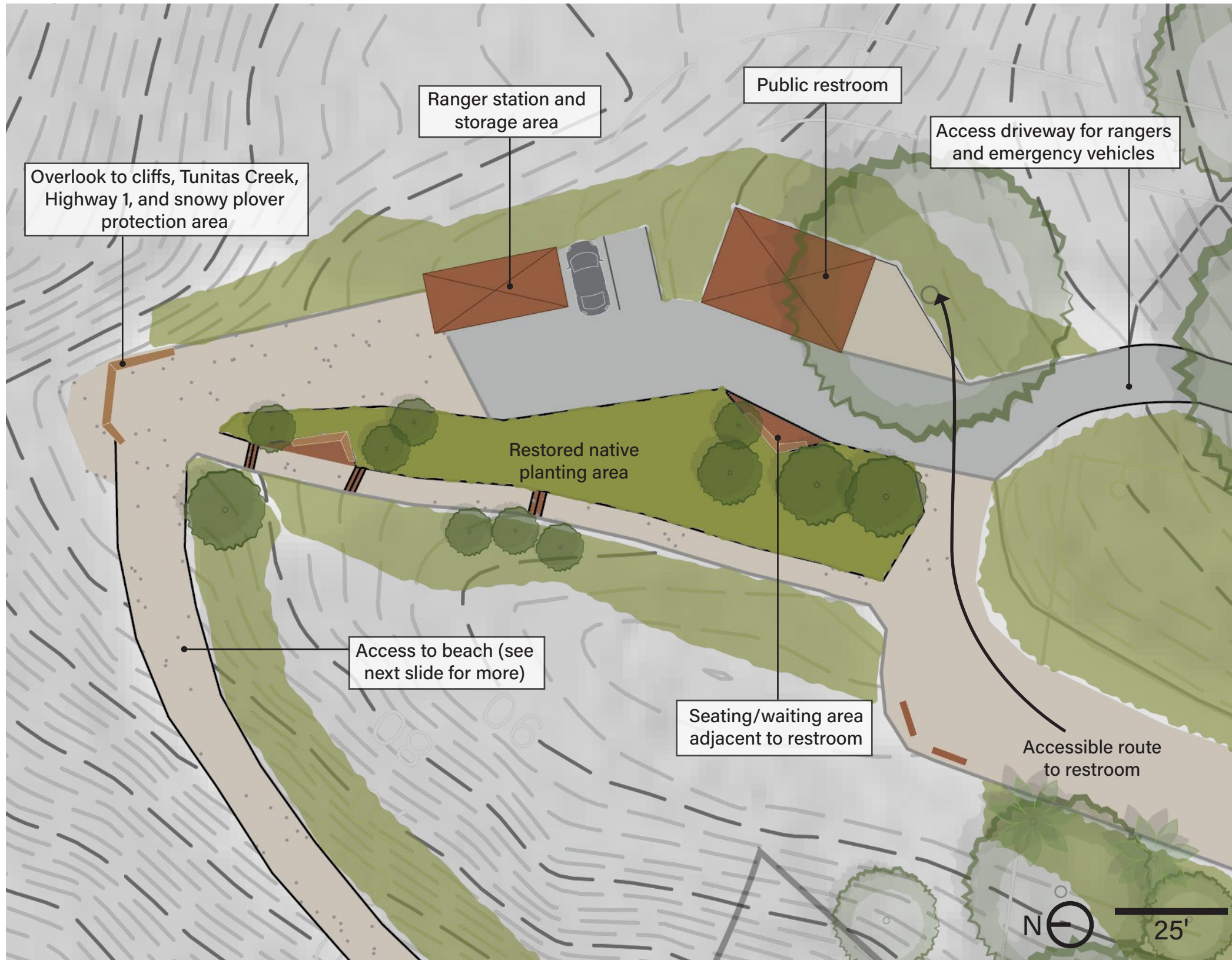
How does this feature impact the four core values of the Tunitas Creek Beach Improvement Project?

- **Environment:** The area shown is currently developed, with an existing asphalt road and residence where features are proposed. The existing residence will be removed and the surrounding landscape will be replanted with native vegetation. Any unstable slopes near the residence will be stabilized.
- **Equity:** The mid-bluff experience will be accessible to all visitors of Tunitas Creek Beach.
- **Education:** Features in the mid-bluff present opportunities for educational exhibits about the site, wildlife, and human history.
- **Experiences:** The mid-bluff will provide a unique viewing and seating experience for visitors making their way down to the beach or to the restroom.



Example of Seating and Overlook Along Path

MID-BLUFF FEATURES



The Ranger Station and Public Restroom

- Many respondents to the public survey expressed interest in having a ranger station to **enforce protection of the site and its wildlife**, as well as to host educational field trips and provide stewardship opportunities for visitors.
- The restroom will be necessary for the enjoyment of all visitors spending time at Tunitas Creek Beach and will be accessible to users of all abilities.

How does this feature impact the four core values of the Tunitas Creek Beach Improvement Project?

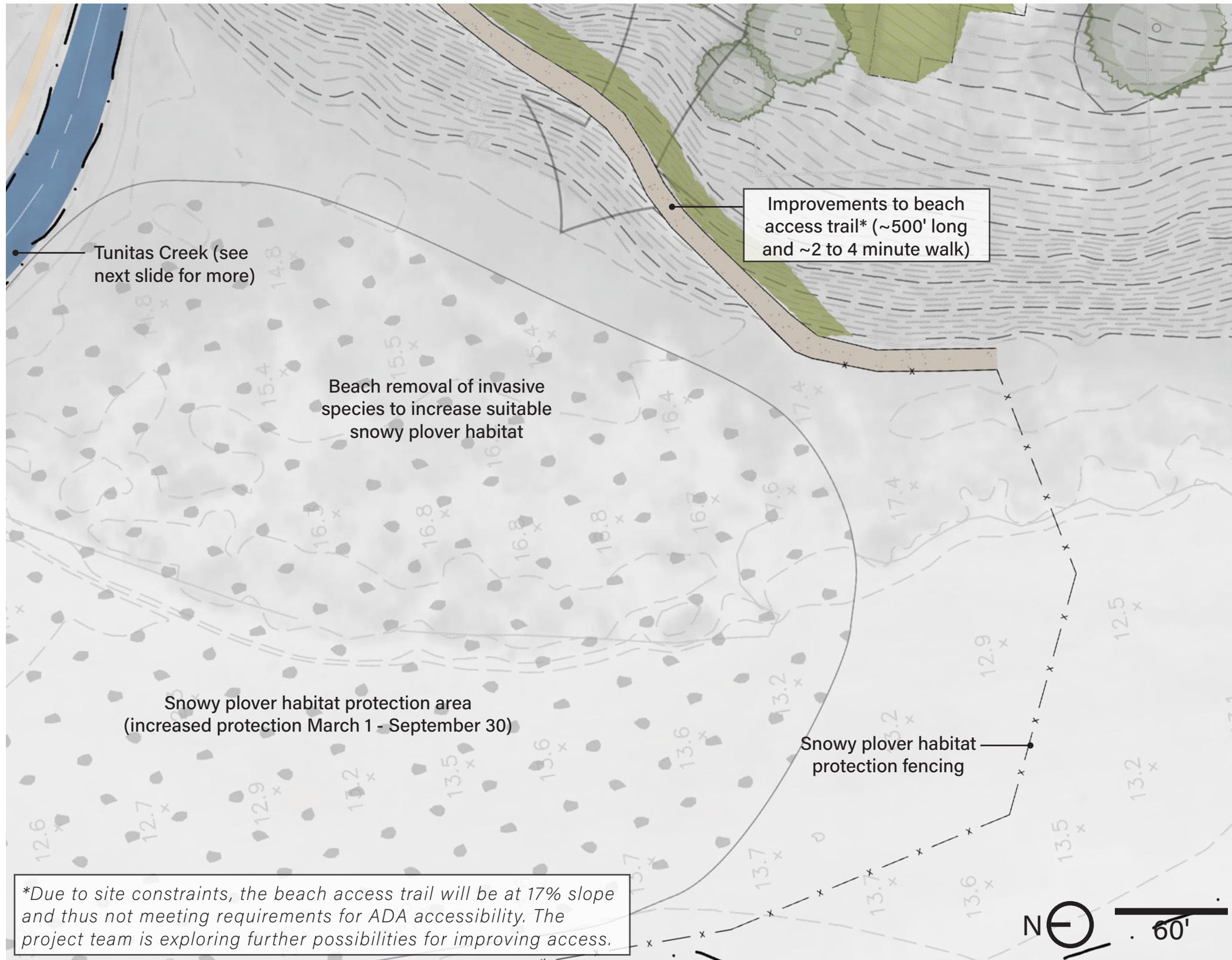
- **Environment:** The mid-bluff today is largely developed, with a gravel parking area where the ranger station and restroom are proposed. Some of this existing gravel area will be replanted with native species; any unstable slopes will be stabilized.
- **Equity:** The ranger station and public restroom will be accessible for users of all abilities. The ranger station presents an opportunity for **active outreach** to communities to enjoy Tunitas Creek Beach.
- **Education:** Overlooks to Highway 1, Tunitas Creek, and the snowy plover protection area provide opportunities for educational features. The ranger presence will be an opportunity for ranger-led educational field trips, stewardship programs, and other general information for visitors of Tunitas Creek Beach.
- **Experiences:** The mid-bluff will provide resting, viewing, and educational experiences for visitors.



Example of Ranger Station and Restroom Structures



BEACH FEATURES



Snowy Plover Habitat Protection

- The western snowy plover is a **federally listed threatened species** with suitable nesting and foraging habitat present on the sandy beach and dunes. Many respondents to our public survey expressed enthusiastic support at the potential of a **fenced-off protection zone** for the snowy plover to nest.
- 24-hour ranger presence can help to monitor and enforce this protection zone.
- Nesting season for snowy plovers is **March-September**. The project team is exploring the potential of increased protection measures during this time period.

How does this feature impact the four core values of the Tunitas Creek Beach Improvement Project?

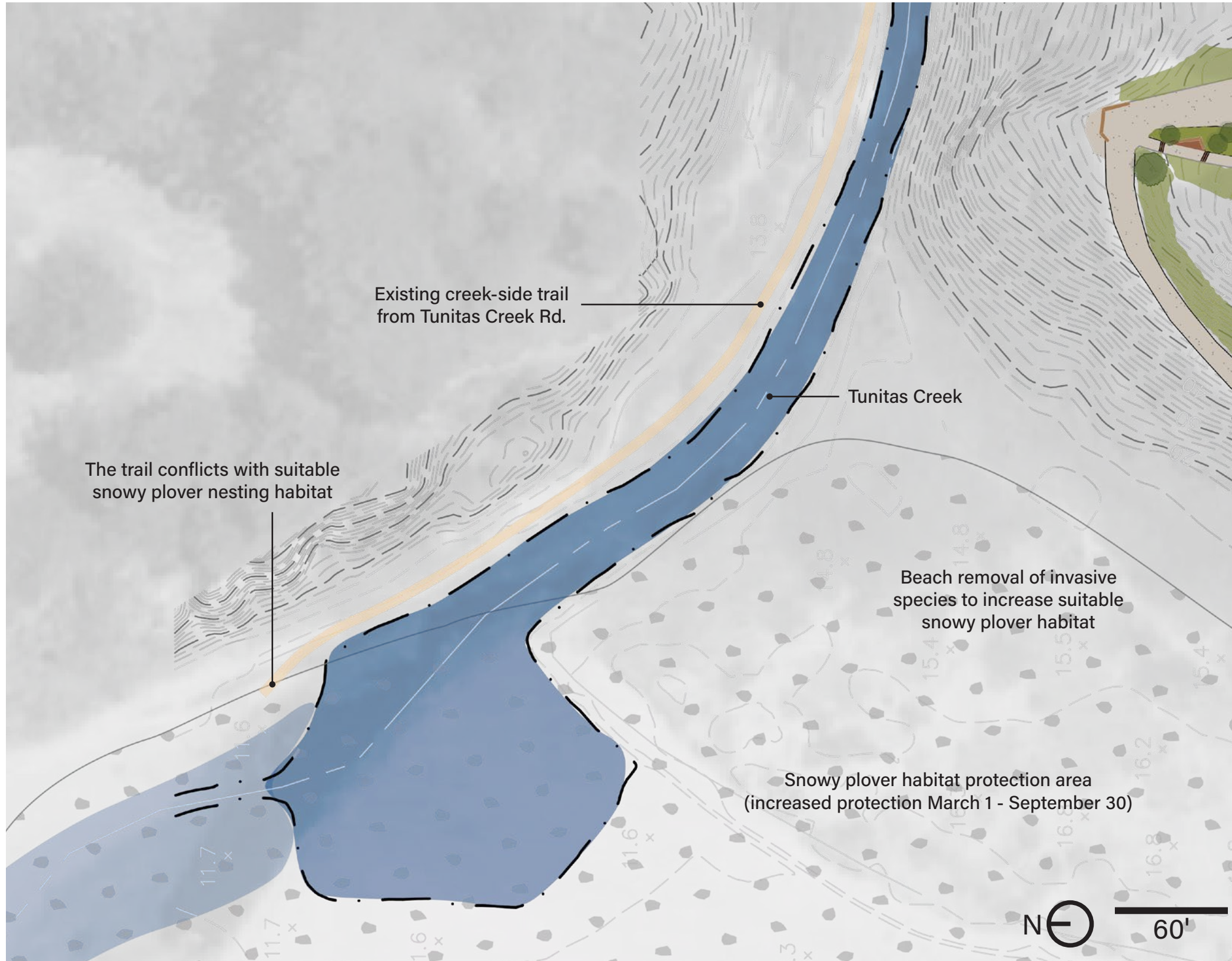
- Environment:** The protection area will be greatly beneficial not only to snowy plovers, but to other wildlife who use the beach as habitat and to the health of Tunitas Creek. **Removal of invasive iceplant** on the beach will increase snowy plover habitat.
- Equity:** The beach will be public and open to all.
- Education:** The overlook point at the edge of the mid-bluff to the snowy plover protection area provides a **safe viewing** opportunity of the nesting habitat. The fencing will serve as a reminder to share the beach with wildlife.
- Experiences:** Preservation of beach and Tunitas Creek wildlife habitat will enhance visitors' appreciation of the site's character.



Habitat Protection Fencing and Removal of Invasive Species



TUNITAS CREEK PROTECTION



What will happen to the creek-side trail from Tunitas Creek Road?

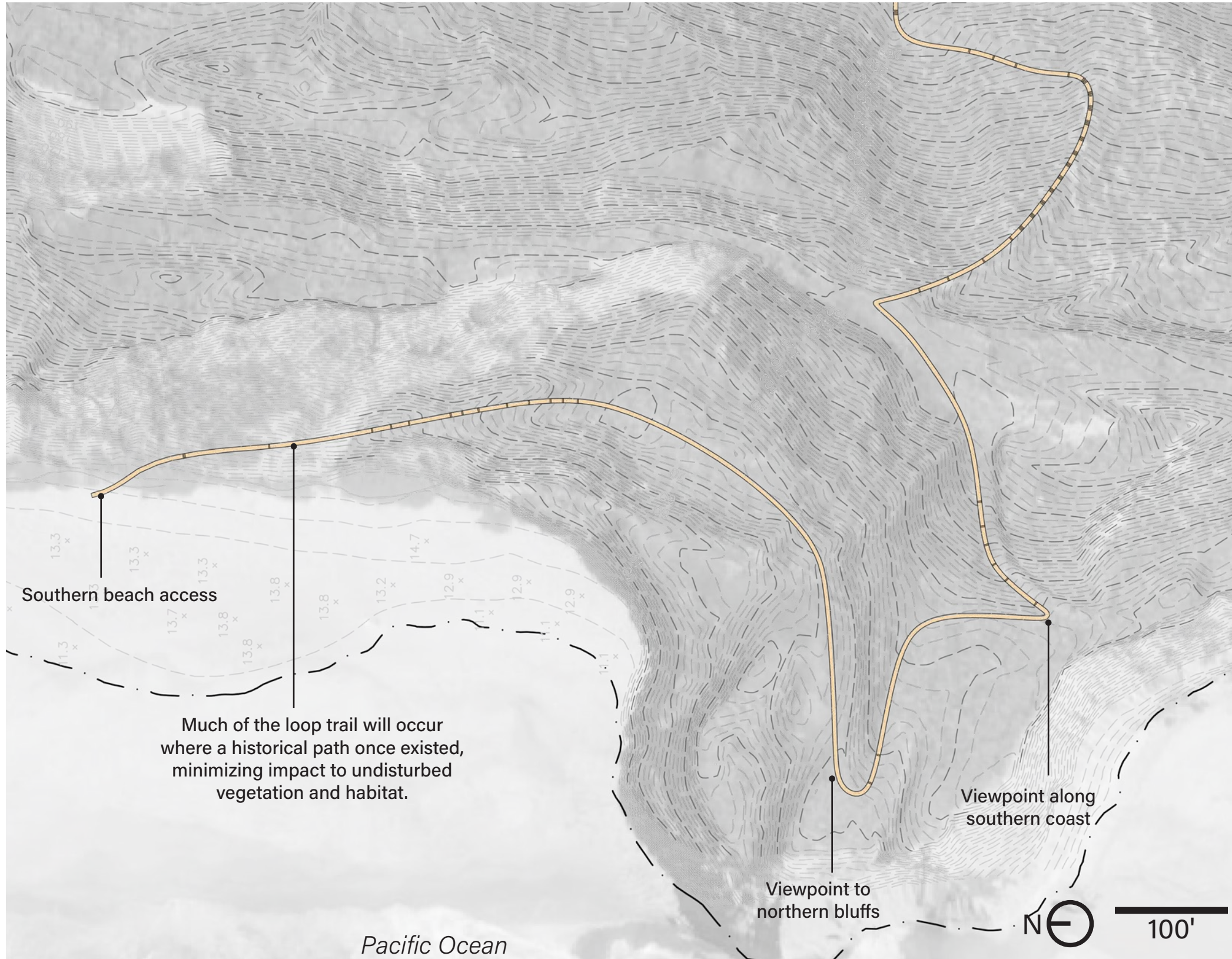
- The existing creek-side trail is detrimental to the health of Tunitas Creek and surrounding vegetation and, given the location of suitable snowy plover nesting habitat on the beach, can be harmful to wildlife in the proposed protection area.
- Though the trail is outside of the property boundaries of the Improvement Project, the project team hopes to discourage use by providing adequate parking, improved access trails to the beach, and viewing areas of the creek.



Existing Creek-Side Trail



TRAIL ACCESS



Why is an additional trail access point to the south area of the beach necessary?

- One of the baseline improvements to the beach will be the **closing and replanting of the existing informal trails** which are unsafe and detrimental to the health of the bluffs. The creation of a **safer alternative route** to the south areas of the beach will further discourage use of those informal trails.
- The creation of this nearly 3/4 mile trail will create a full **1.7-mile hiking loop trail** around the entire site of Tunitas Creek Beach, an opportunity which many respondents to our public survey supported.

How does this feature impact the four core values of the Tunitas Creek Beach Improvement Project?

- **Environment:** The creation of this trail will discourage use of other trails which are causing erosion along the bluffs. The trail will follow the most favorable topographic and environmental conditions to **minimize erosion and loss of vegetation**.
- **Equity:** The trail will not be accessible to all users due to steep terrain.
- **Education:** Some points along the trail can provide opportunities for educational design features.
- **Experiences:** The creation of a loop trail will be an additional hiking experience and an opportunity for viewpoints to both the northern bluffs and to the southern coast beyond Tunitas Beach.



Example of Trail to the Beach



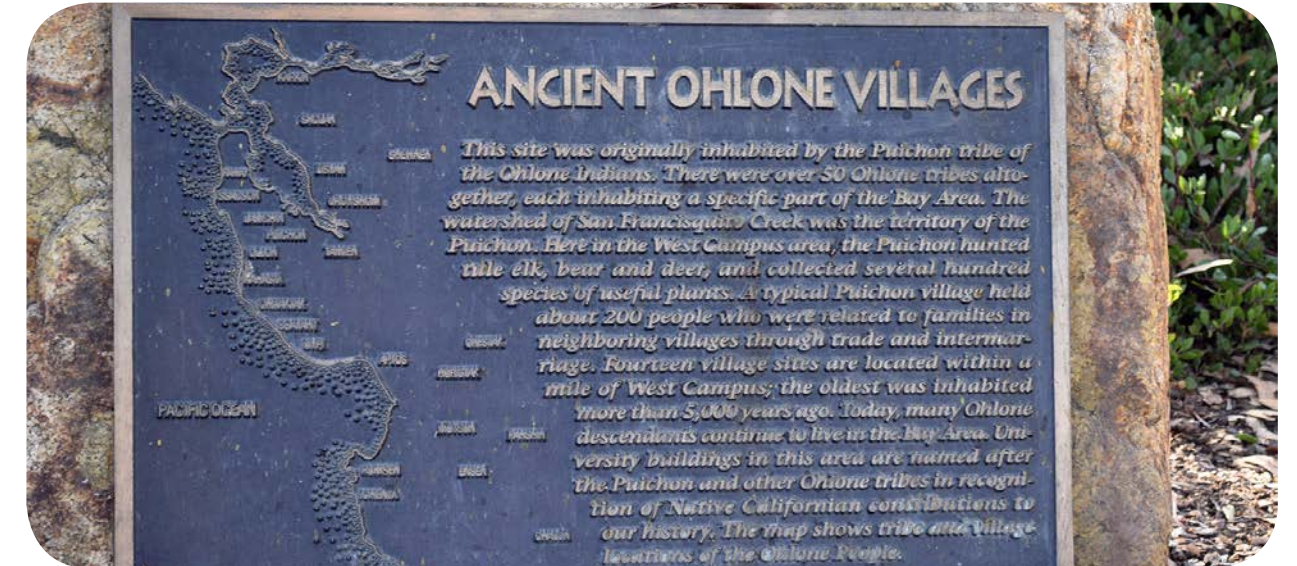
PROGRAMMING OPPORTUNITIES

Beyond physical built design elements, the Tunitas Creek Beach Improvement Project presents many programming opportunities relating to education, outreach, environmental protection, and experiences:



Community Science and Stewardship Programs

While waste receptacles and basic maintenance services will be provided, the project team understands the need for continued volunteer community stewardship programs.



Indigenous Cultural Programming

The project team is engaging with indigenous community members to create a land acknowledgement feature and explore opportunities for educational and cultural events.



Outdoor Education and Field Trips

With a ranger station on site, the project team is exploring the potential for ranger- or educator-led field trips and site tours.



Wildlife Viewing

With improved habitat protection and safe viewing experiences, Tunitas Creek Beach provides an opportunity for bird-watching groups and other wildlife viewing trips, as well as volunteer wildlife monitoring and supervised habitat restoration activities.



Let's hear from you! What programming opportunities are you excited to see at Tunitas Creek Beach?

1. WHAT WE HEARD

2. PRIORITY IMPROVEMENTS

3. POTENTIAL ADDITIONAL KEY FEATURES





ADDITIONAL KEY FEATURES

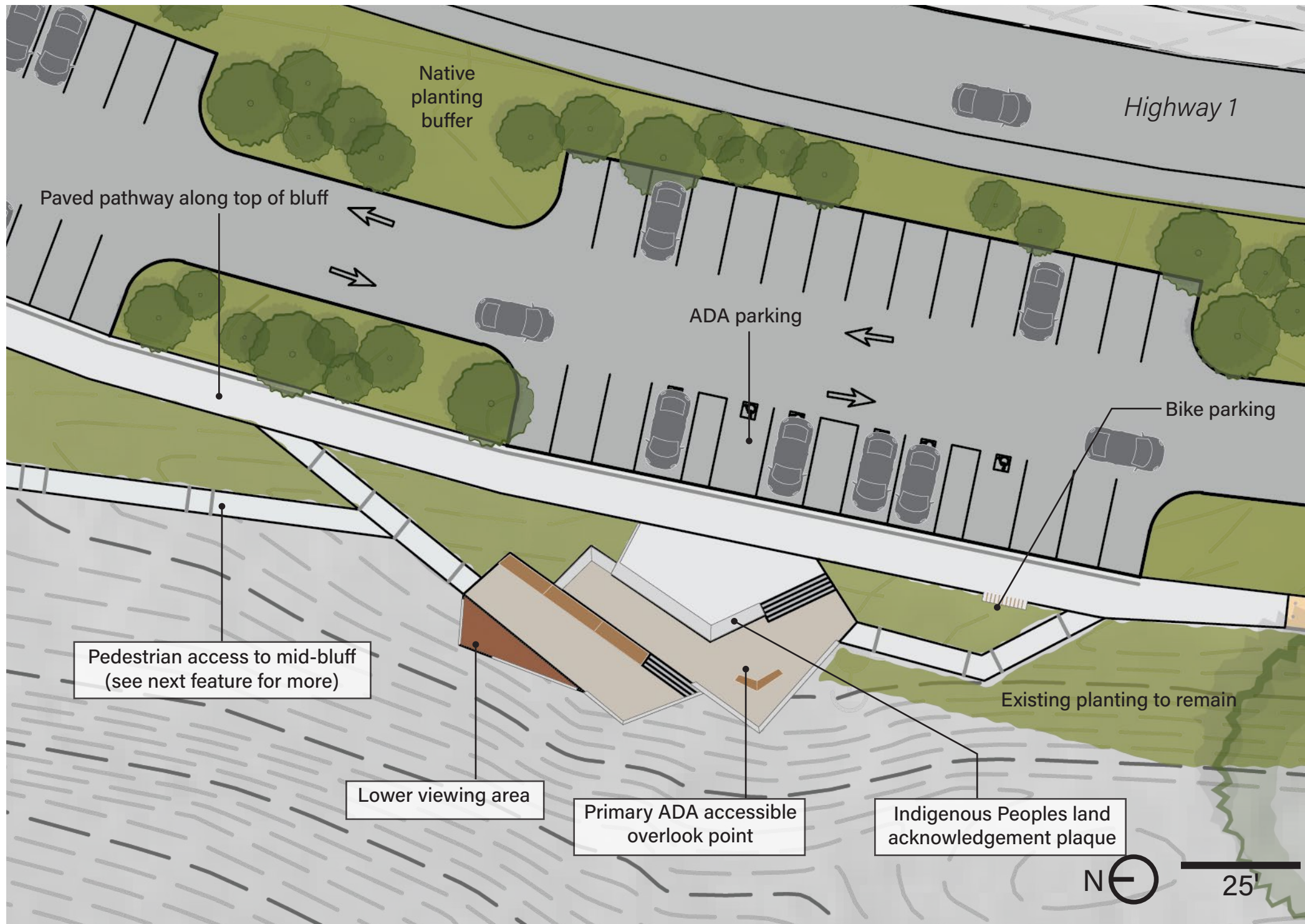
Having heard from the community regarding the three alternatives presented in the last public input survey, the project team zeroed in on the baseline improvements to be prioritized. Now, we hope to further engage with the community regarding any **additional key features and programs** to be included. We have taken your suggestions and feedback and revised the following features to minimize impact, integrate into their natural setting, and enhance user experience:

- Improved Overlook Experience
- Pedestrian Path Rest Stops
- Interpretation Pavilion
- Nature Walk
- Picnic Area in the Mid-bluff
- Mid-bluff Amphitheater Seating
- Wildlife-Viewing Boardwalk on the Beach
- Seating and Overlook along Loop Trail



Let's hear from you! Build your own ideal scenario for Tunitas Creek Beach by weighing in on each of the potential additional features in the survey that follows.

IMPROVED OVERLOOK EXPERIENCE



Improved Overlook Experience

- Additional features for the main overlook could include **multiple levels** of the viewing and seating experience. These levels would involve higher intensity development but would allow increasing buffering from Highway 1 noise and create space for more visitors to enjoy the views.

How does this feature impact the four core values of the Tunitas Creek Beach Improvement Project?

- Environment:** An improved overlook point would extend beyond the existing disturbed area but would follow the existing grade.
- Equity:** All areas and levels of the overlook point would be ADA accessible.
- Education:** An Indigenous Peoples land acknowledgement plaque will educate visitors on history at Tunitas Creek Beach. The site provides further opportunities for information about the site, wildlife, and human history.
- Experiences:** This overlook would provide additional seating as well as multiple levels of viewing experiences which act as a **buffer from vehicle noise and pollution.**



Improved Overlook Experience (See Next Page)

Let's hear from you! Would you like to see this improved overlook added to the design improvements?



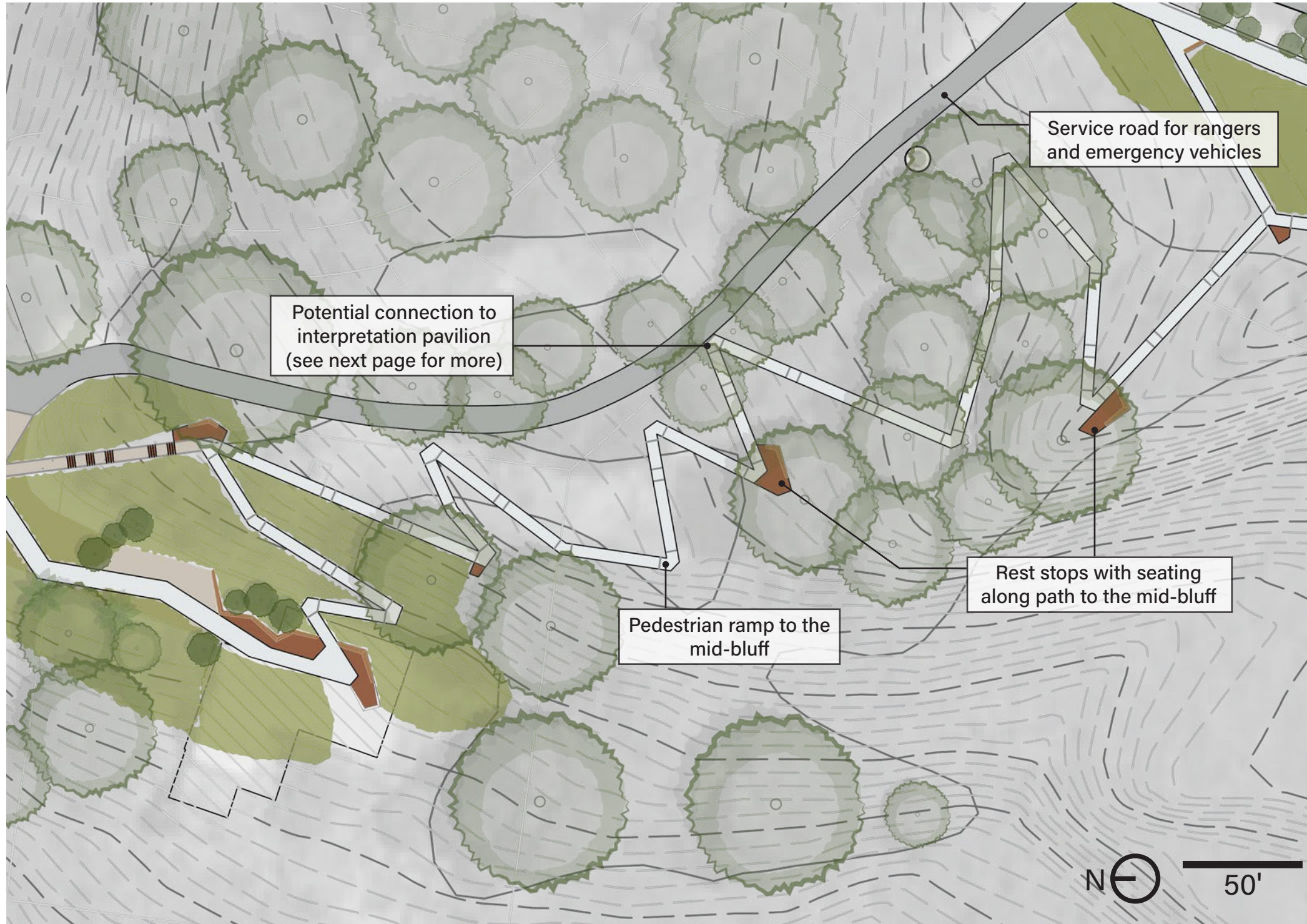
IMPROVED OVERLOOK EXPERIENCE



Existing Site Conditions

 Let's hear from you! Would you like to see this improved overlook added to the design improvements?

PEDESTRIAN PATH REST STOPS



Pedestrian Path Rest Stops

- While this ADA-compliant pedestrian pathway ensures all users can enjoy features at the mid-bluff and provides easier access to the beach, the project team understands that the path will be nearly 1/4 mile long and may benefit from **designated rest stops**.

How does this feature impact the four core values of the Tunitas Creek Beach Improvement Project?

- Environment:** The additional rest stops will require some minor vegetation removal to create the space necessary.
- Equity:** These improvements will improve the **ease of access** for all visitors to Tunitas Creek Beach.
- Education:** The rest stops are an opportunity for educational signage and design features.
- Experiences:** These stops provide additional scenic viewpoints and informal picnicking areas for all users.



Pedestrian Path Rest Stop



Let's hear from you! Would you like to see rest stops, seating, and interpretive elements along the pedestrian path added to the design improvements?

INTERPRETATION PAVILION



Interpretation Pavilion and Nature Walk

- Respondents to the previous public survey expressed support for the idea of an interpretation center and interpretive features, but voiced **concerns against a large built-out visitor center** which would require high impact development.
- In response to those concerns, the design team is proposing the option of a passive **interpretation pavilion** for visitors to learn about the site and history of Tunitas Creek Beach.
- An additional feature is the nature walk which would complement the interpretive experience and include logs and other natural elements as educational features.
- The content displayed in the interpretation pavilion would be coordinated with relevant organizations throughout the area, including Native Ohlone groups and historical associations.

How does this feature impact the four core values of the Tunitas Creek Beach Improvement Project?

- **Environment:** The pavilion would be less impactful than a visitor center building but still require some construction and clearing of vegetation.
- **Equity:** The interpretive elements would recognize the **cultural history of the site**, from its time as an Ohlone seasonal village to the Ocean Shore Railroad. The creation of this pavilion is a great opportunity to **engage** with members of the Native community. The pavilion would connect to the pedestrian trail and therefore be accessible to visitors of all abilities.
- **Education:** The pavilion would be an important stop for all visitors to learn about the site, wildlife, and human history.
- **Experiences:** The pavilion and nature walk would be enjoyable for users of all ages, as well as being a quiet place for reflection.



Let's hear from you! Would you like to see an interpretation pavilion and nature walk added to the design improvements?



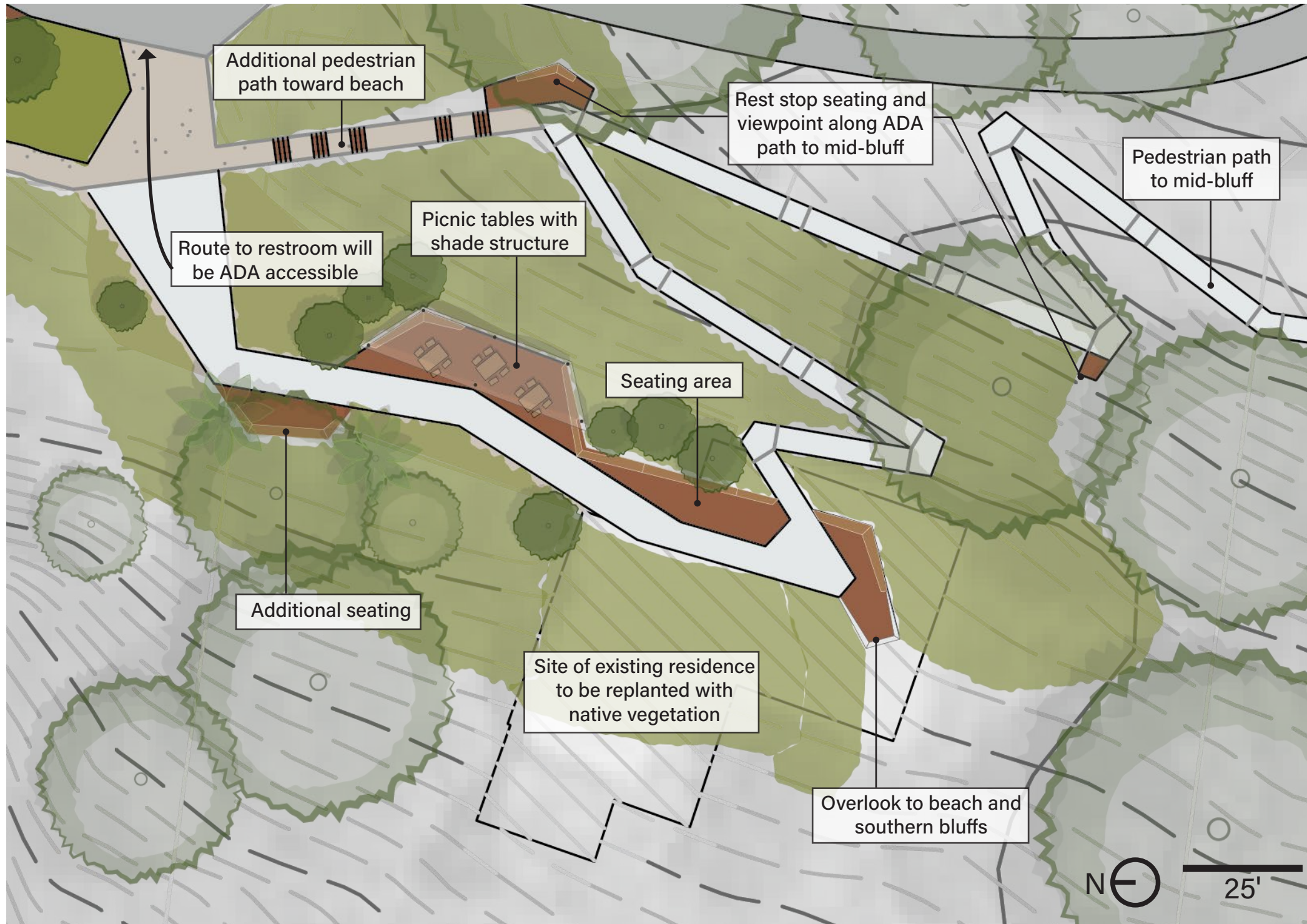
INTERPRETATION PAVILION



Existing Conditions of Potential Interpretation Pavilion Location

 *Let's hear from you! Would you like to see an interpretation pavilion added to the design improvements?*

PICNIC PAVILION



Picnic Pavilion with Shade Structure

- Picnic tables and seating would provide a safe place for people to picnic away from the beach and away from Highway 1. Respondents to the public survey expressed some support for picnic tables but wanted more context.

How does this feature impact the four core values of the Tunitas Creek Beach Improvement Project?

- **Environment:** The picnic pavilion would be located on the site of the existing asphalt driveway to the existing residence. **No vegetation would be removed** and some surrounding areas would be replanted with native species. Proper waste disposal would be provided.
- **Equity:** The picnic area would provide an improved accessible experience for those who may have more trouble making their way down to the beach, and be a gathering place for **families and small groups**.
- **Education:** The pavilion could serve as a central meeting place for field trips and educational talks.
- **Experiences:** A picnic area would enhance the full-day beach experience and provide viewpoints to the northern bluffs.

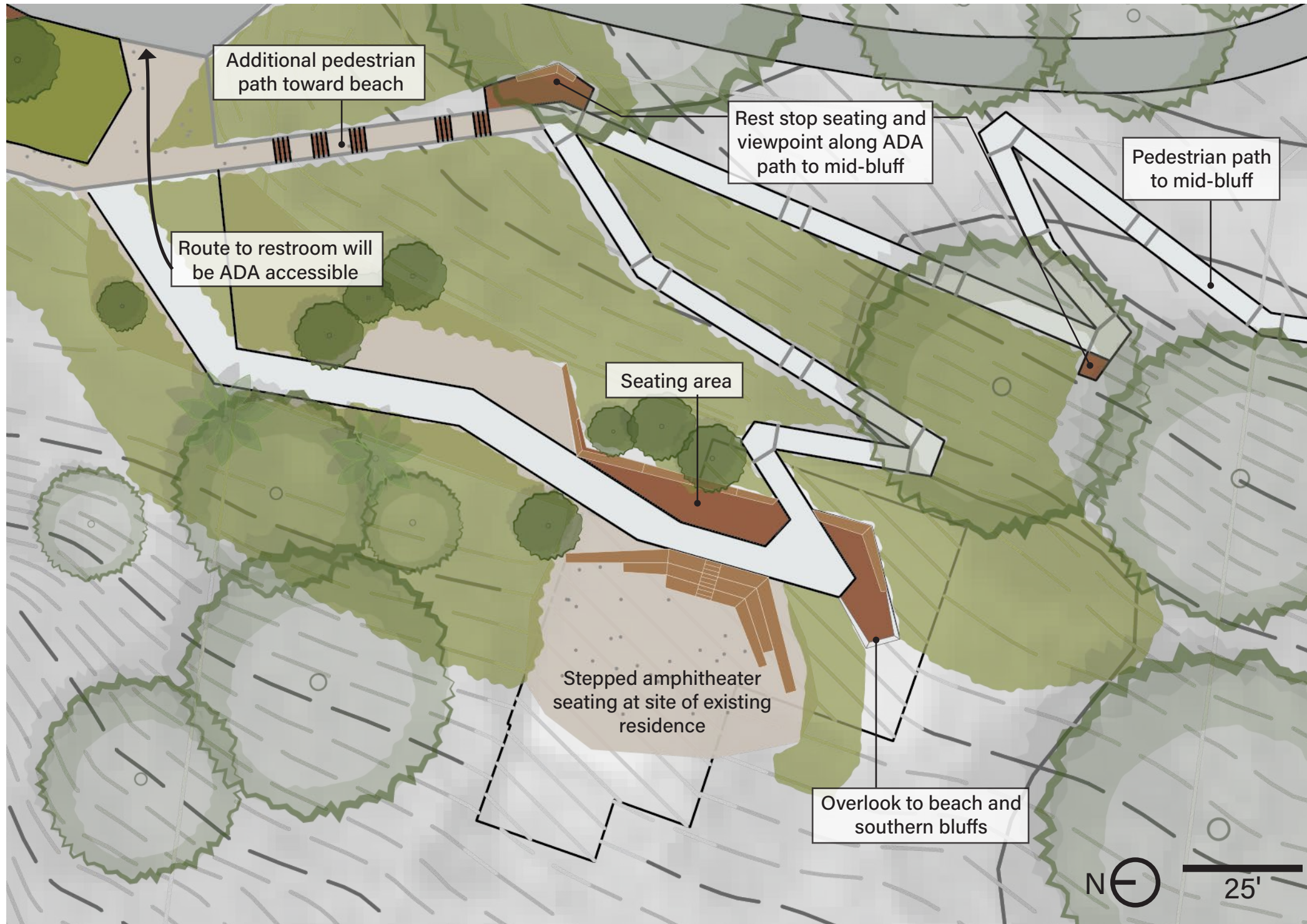


Mid-bluff Picnic Pavilion



Let's hear from you! Would you like to see picnic pavilion and shade structure in the mid-bluff added to the design improvements?

AMPHITHEATER SEATING



Mid-bluff Amphitheater Seating

- Amphitheater style seating at the mid-bluff received support from members of the community who would like to see some **gathering space** for events and educational programs.

How does this feature impact the four core values of the Tunitas Creek Beach Improvement Project?

- Environment:** This feature would be located on the site of the existing residence and follow the existing grade. Vegetation would not need to be removed; however it would limit revegetation efforts in the area.
- Equity:** A place to host small gatherings and events would give all members of the community a place to feel welcome.
- Education:** The seating area is an opportunity for ranger- or educator-led educational events.
- Experiences:** Beyond being a chance for small gatherings, the amphitheater seating would also provide panoramic viewpoints and be an informal picnicking area for visitors.



Mid-bluff Amphitheater Seating (See Next Page)



Let's hear from you! Would you like to see amphitheater seating in the mid-bluff added to the design improvements?



MID-BLUFF ADDITIONAL FEATURES



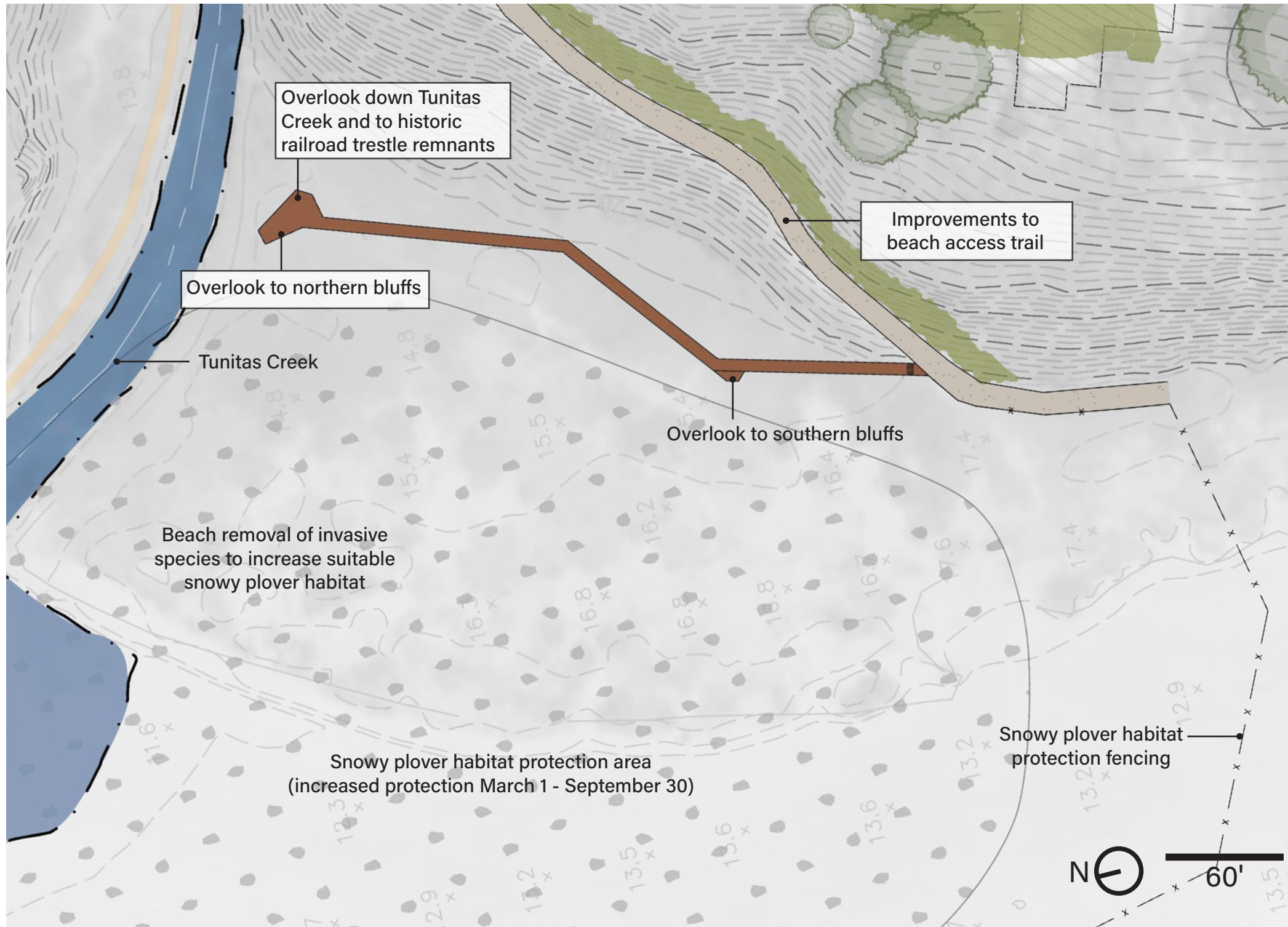
Existing Mid-Bluff Conditions



Let's hear from you! Would you like to see either of these additional features added to the mid-bluff design improvements?



WILDLIFE-VIEWING BOARDWALK



Seasonal Wildlife-Viewing Boardwalk on the Beach

- A potential additional feature on the beach would be a raised boardwalk through the plover habitat. Respondents to our public survey expressed both excitement of the idea of a **safe viewing experience of the creek** and concern of impact to the **snowy plover nesting habitat**.
- The project team has coordinated with a biologist team to discuss impacts to the habitat and determined that a potential boardwalk would likely need to be closed from March-September for maximum protection of the snowy plovers' habitat.

How does this feature impact the four core values of the Tunitas Creek Beach Improvement Project?

- **Environment:** As a raised boardwalk, the feature would have a minimal impact on the beach. The creation of a designated walkway overlooking the creek could further discourage use of the creek-side trail which conflicts with plover habitat.
- **Equity:** The boardwalk may not be accessible to all users given the steep access trail.
- **Education:** Views overlooking the creek, plover habitat, remains of the old railroad trestle, and the northern bluffs would be complimented by informational features along the boardwalk.
- **Experiences:** The boardwalk along the beach provides an additional viewing experience despite much of the area being fenced off for protection.



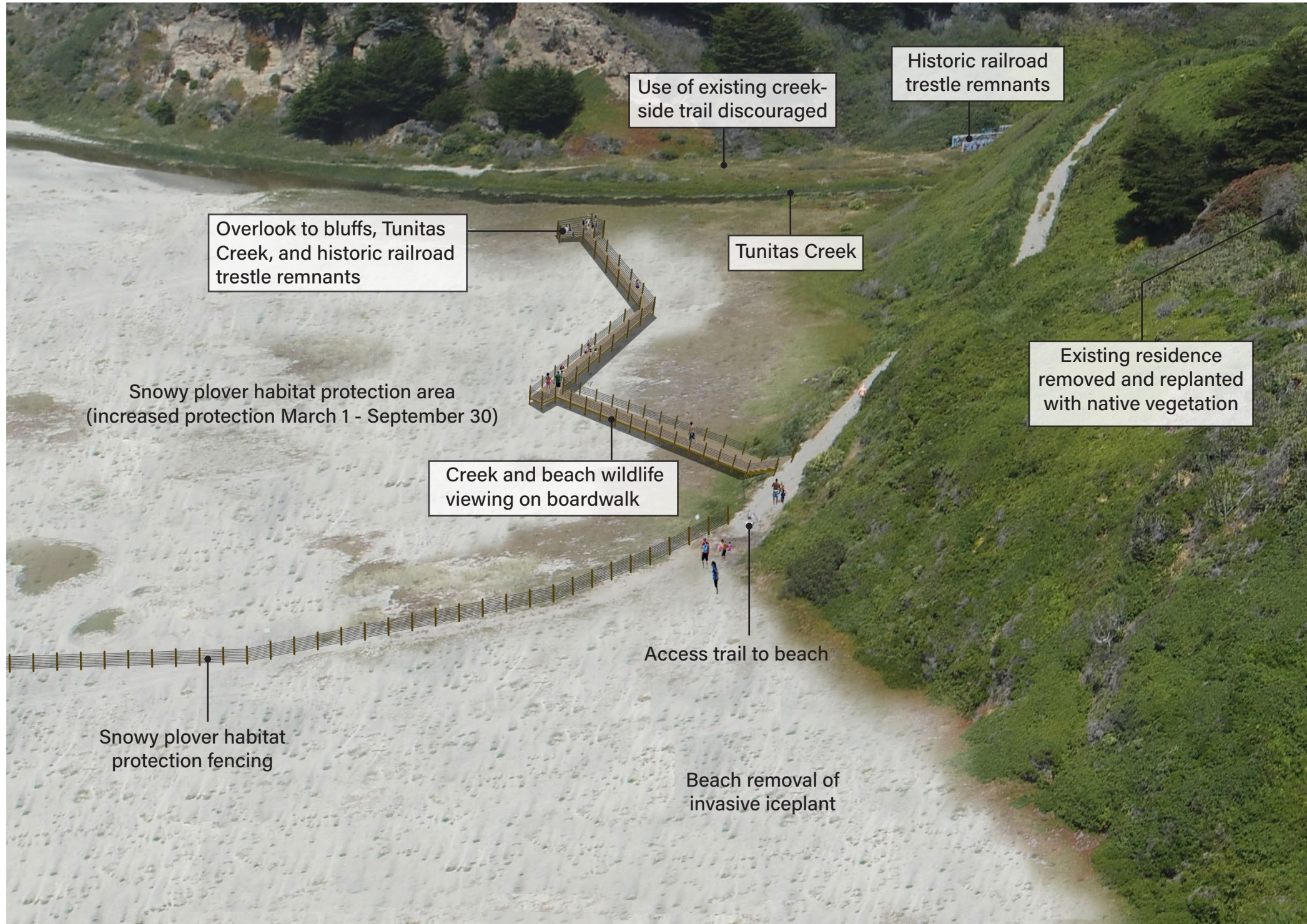
Wildlife-Viewing Boardwalk (See Next Page)



Let's hear from you! Would you like to see a seasonal wildlife-viewing boardwalk on the beach added to the design improvements?



WILDLIFE-VIEWING BOARDWALK



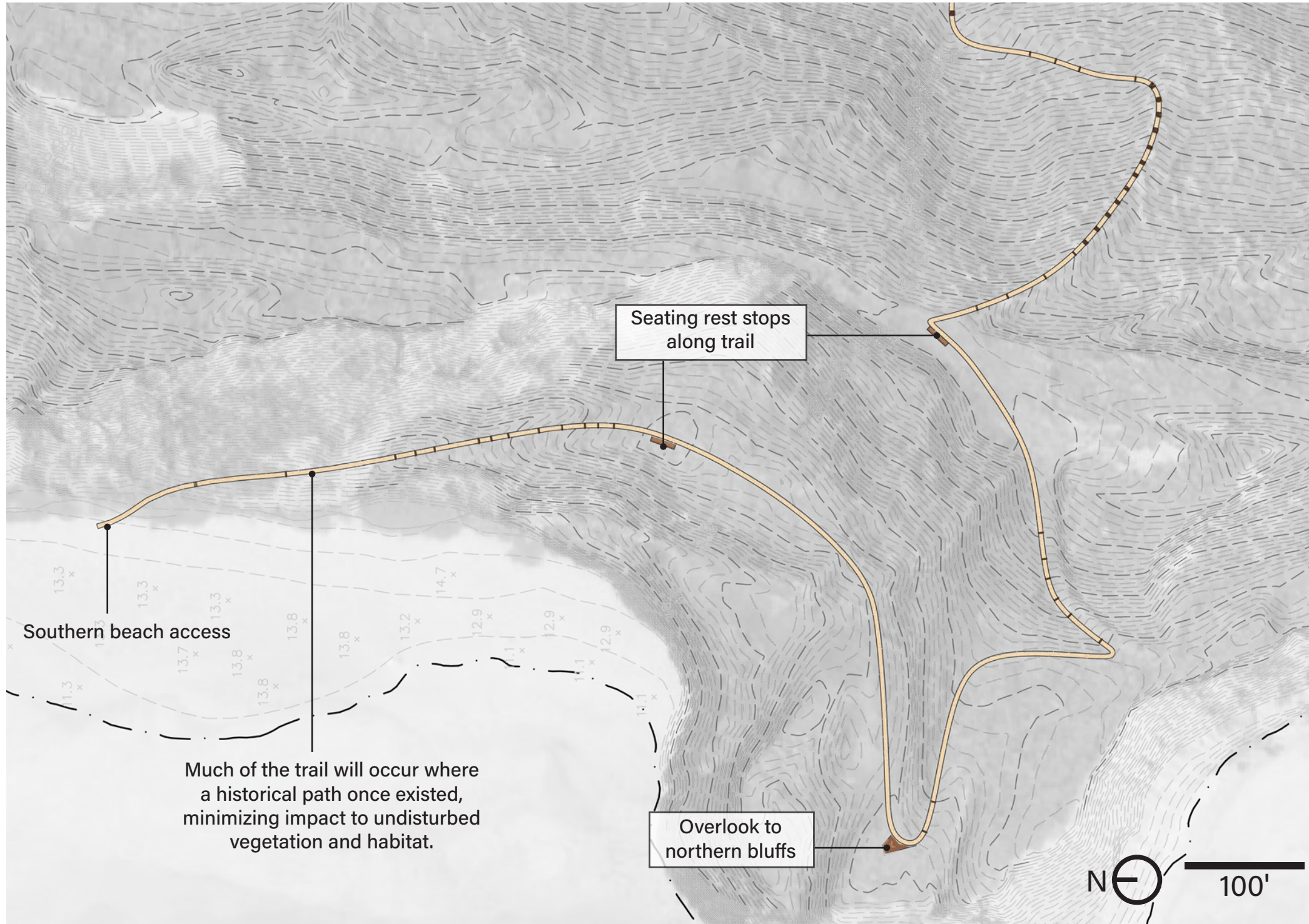
Existing Beach Conditions



Let's hear from you! Would you like to see a seasonal wildlife-viewing boardwalk on the beach added to the design improvements?



TRAIL SEATING AND OVERLOOK



Seating and Overlook Along Southern Trail

- The southern trail access will be nearly **3/4 mile long** and would benefit from rest stops along the way.
- The project team is proposing the option of additional seating **rest stops and an overlook point** along the trail.

How does this feature impact the four core values of the Tunitas Creek Beach Improvement Project?

- **Environment:** While some vegetation will need to be cleared, the seating and overlook points shown will be located adjacent to flat segments of the trail, reducing potential erosion.
- **Equity:** This trail will not be ADA accessible.
- **Education:** Opportunities for education about the story of erosion and sea level rise at Tunitas Creek Beach.
- **Experiences:** The rest stops would improve the experience of visitors hiking the **loop trail** (see next page). Points along the trail could be ideal for wildlife viewing.



Example of Overlook along Trail



Let's hear from you! Would you like to see additional seating and an overlook along the loop trail added to the design improvements?



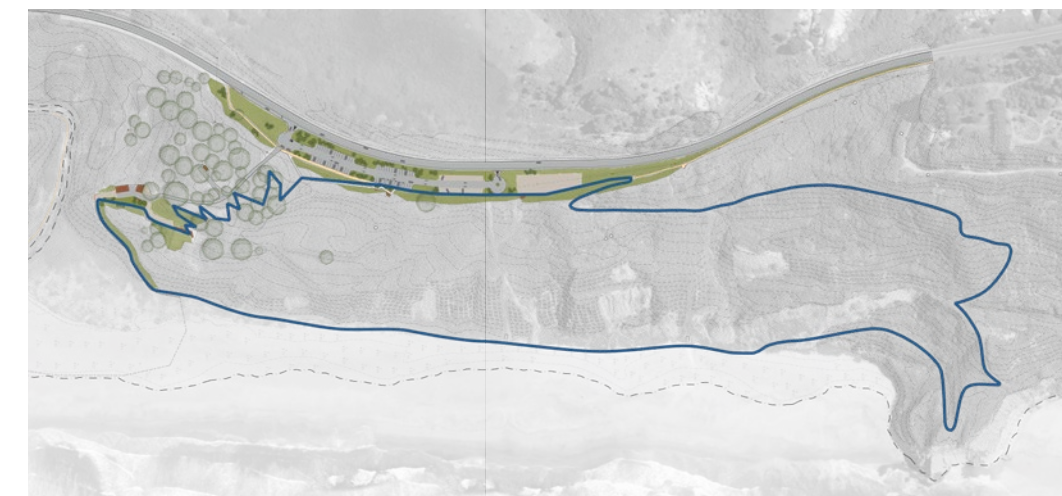
TRAIL SEATING AND OVERLOOK



Tunitas Creek Beach Loop Trail by the Numbers

- **Length:** 1.7 mi (2.7 km)
- **Est. Time:** 45 min-1 hour
- **Peak elevation:** 292'
- **Lowest elevation:** 12'
- **Total elevation change:** 644'
- **Average grade:** 7%
- **Max. grade:** 15%
- **Trail Surface:** Soft surface natural trail

The loop trail will follow the path of **least resistance** with regards to existing vegetation and habitats. The trail will include **stairs** where needed to minimize environmental degradation, and the project team will implement necessary **erosion control** measures.



Full Loop Trail Around Tunitas Creek Beach



Let's hear from you! Would you like to see additional seating and an overlook along the loop trail added to the design improvements?



Now is your chance to share feedback and ask questions! Go to tunitascreekbeach.org to take the survey. Your feedback will be used to refine our design and create a "preferred alternative."

After completing the survey, join us for our first virtual community meeting!

- Wednesday, October 21: English Virtual Community Meeting
- Thursday, October 22: Spanish Virtual Community Meeting

The survey will remain online until November 13, 2020.

