

San Mateo County

Off-leash Dog Pilot Program Data Summary: Monitoring Period 1 (July 2021 – October 2021)¹ *Baseline Data Collection*

I. Data Results

Table 1. Overall Dog Monitoring Results at Pillar Point Bluff and Quarry Park, as measured from July 16, 2021 to October 14, 2021.

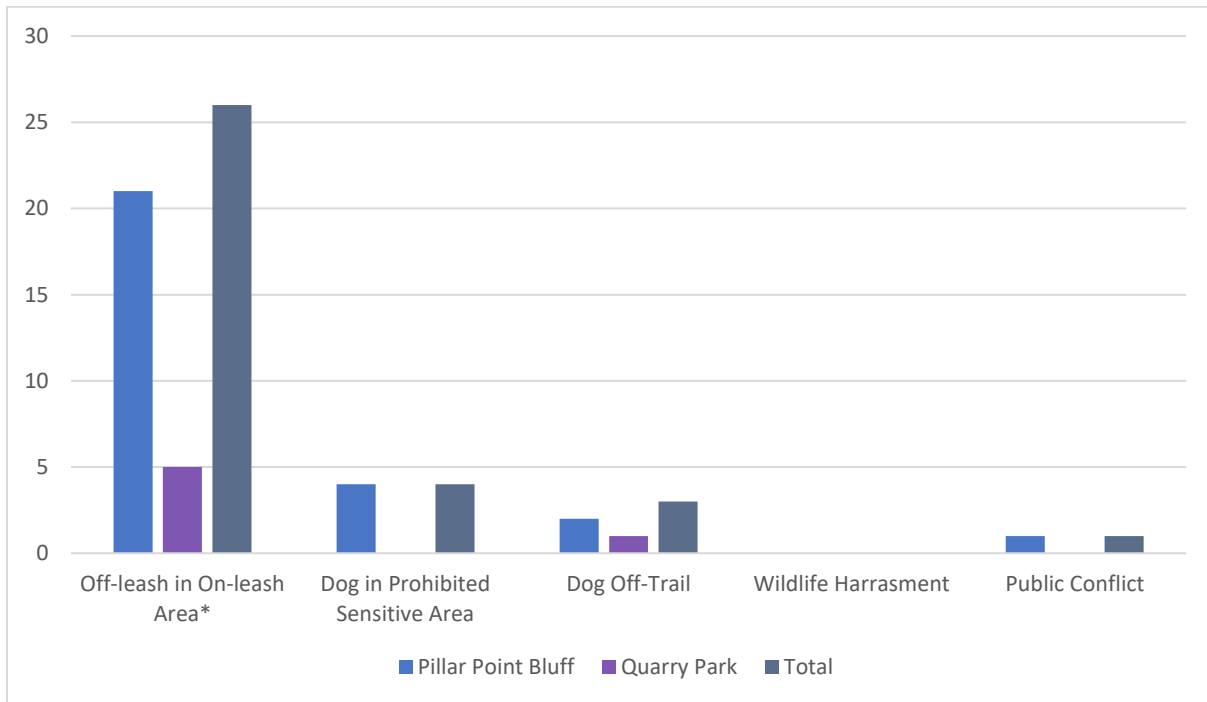
	Standards	Pillar Point Bluff	Quarry Park	Total
Presence of dog waste ²	No more than 20 occurrences in one month per park	46 instances per month	55 instances per month	101 instances per month
Harassment of wildlife	Dogs observed chasing or harassing wildlife two times over a 60-day period	0 instances	0 instances	0 instances
Dog entry to sensitive areas	No dogs observed entering Parks defined and signed sensitive areas	4 instances	0 instances	4 instances
Dogs traveling off-trail	Dogs observed traveling at 10 feet or more off trail	2 instances	1 instance	3 instances
Off-leash in on-leash area	None stated ³	21 instances	5 instances	26 instances
Interactions with dogs and visitors	Any dog is observed exhibiting unwelcome behavior(s) to other dogs or visitors 10 times per month per park	1 instance	0 instances	1 instance

¹ Both July and October were only monitored for half of the month, meaning a three-month time period total.

² “Per month” data for this row was calculated by averaging the total observations for each month indicated in table 2.

³ The standard for this criterion for all future monitoring will be “70% of parties with dogs will have their dogs on a leash on any given day”, on trails that are specified as on-leash trails. For this period, data collected reflects total number of observations during the 3-month period

Graph 1. Dog Monitoring Results (excluding “Presence of Dog Waste”) at Pillar Point Bluff and Quarry Park, as measured from July 16, 2021 to October 14, 2021.



* The standard for this criterion for all future monitoring will be “70% of parties with dogs will have their dogs on a leash on any given day”, on trails that are specified as on-leash trails. For this period, data collected reflects total number of observations during the 3-month period

Table 2. Monthly Dog Monitoring Results for “Presence of Dog Waste” and “Interactions with Dogs and Visitors” at Pillar Point Bluff and Quarry Park, as measured from July 16, 2021 to October 14, 2021.

		July	August	September	October	Total
Pillar Point Bluff	Presence of Dog Waste	65 instances	24 instances	29 instances	19 instances	137 instances
	Interactions with Dogs and Visitors	0 instances	0 instances	0 instances	1 instance	1 instance
		July	August	September	October	Total
Quarry Park	Presence of Dog Waste	97 instances	27 instances	33 instances	10 instances	167 instances
	Interactions with Dogs and Visitors	0 instances	0 instances	0 instances	0 instances	0 instances

Graph 2. Dog Waste Comparison at Pillar Point Bluff and Quarry Park, as measured from July 16, 2021 to October 14, 2021.

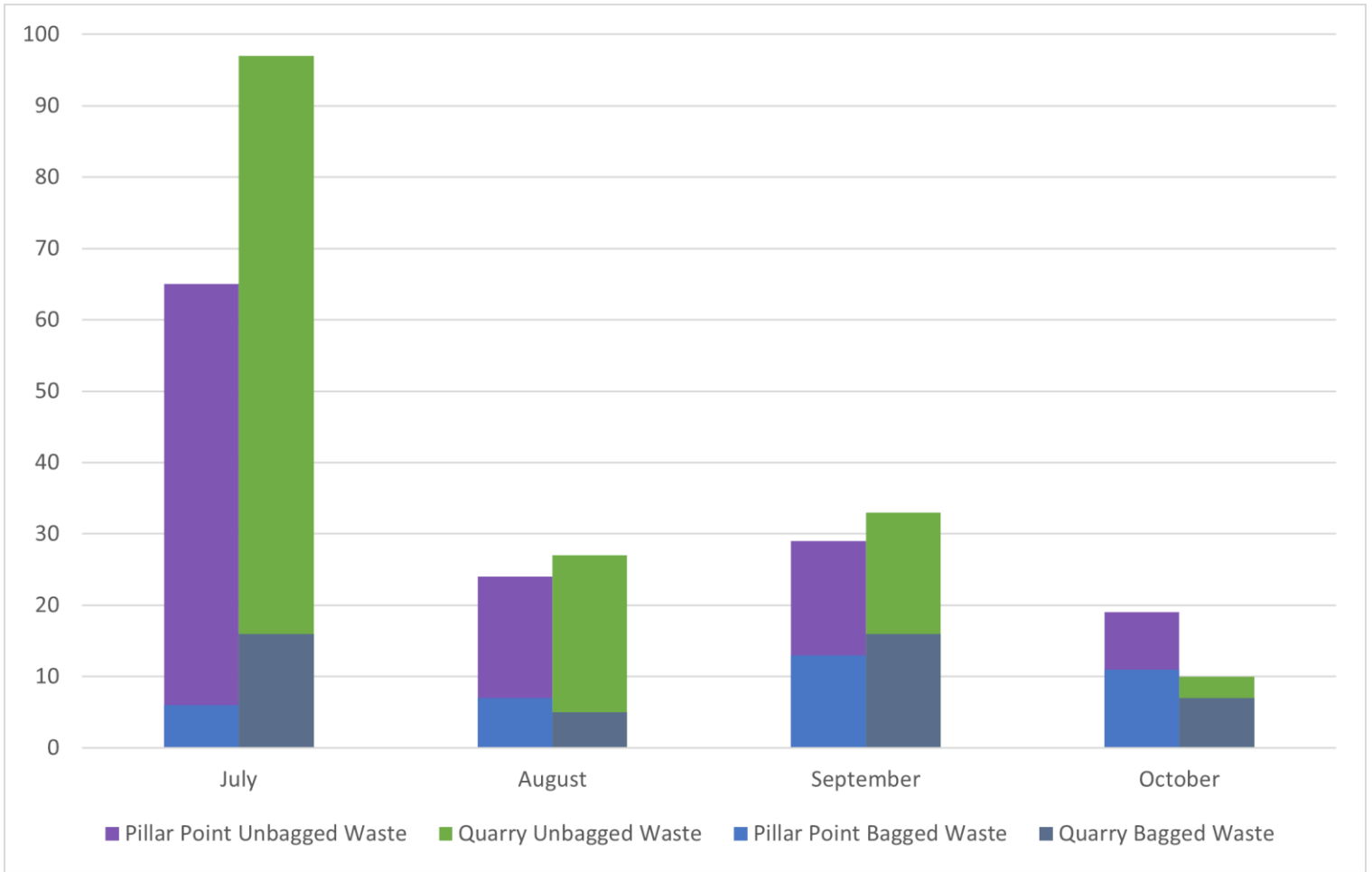


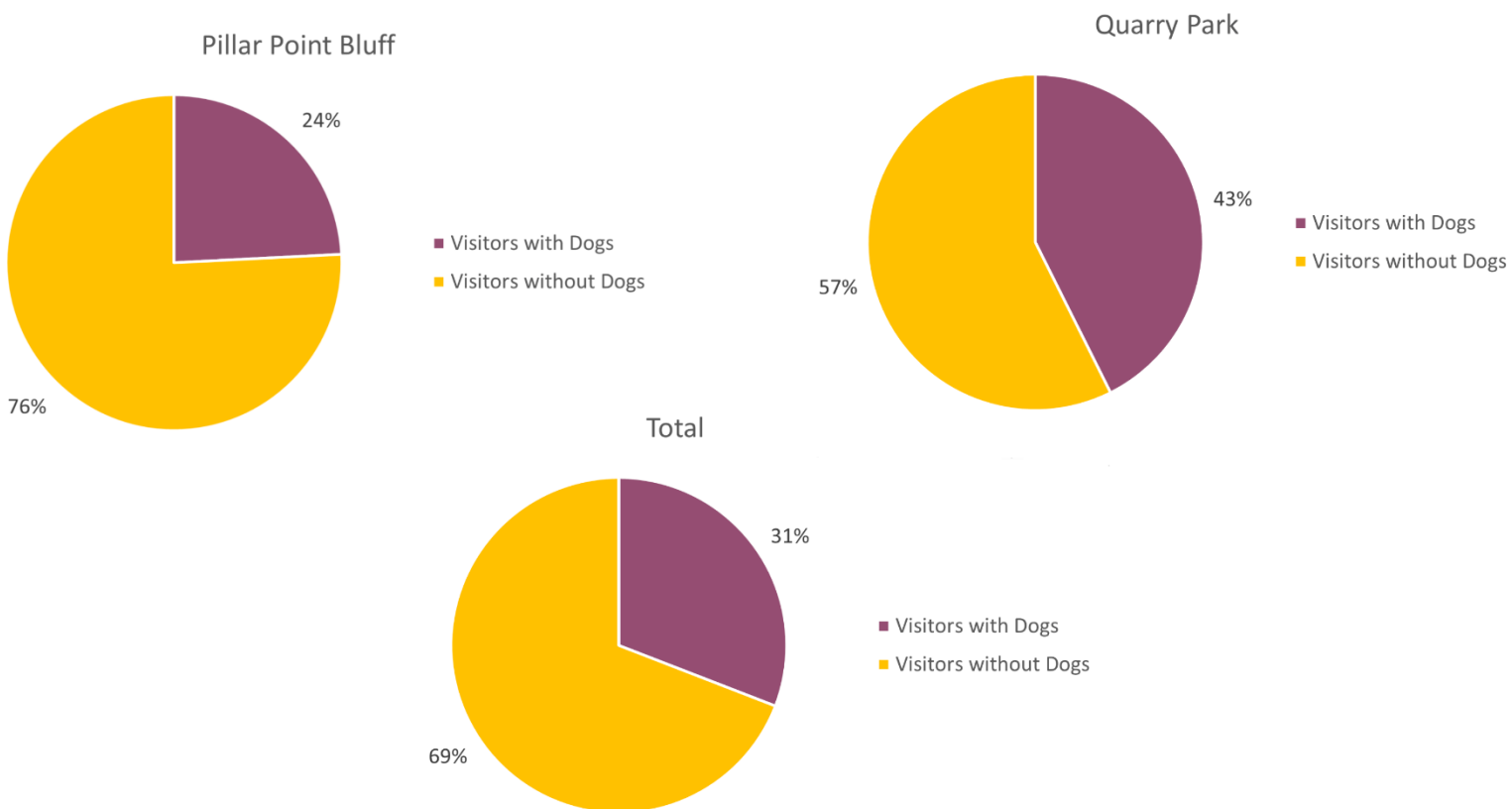
Table 3. Visitor Demographics at Pillar Point Bluff and Quarry Park, as measured from July 16, 2021 to October 14, 2021.

	Pillar Point Bluff		Quarry Park		Total	
Total visitors overall	1,037		589		1,626	
	Count	% of visitors overall	Count	% of visitors overall	Count	% of visitors overall
Visitors without dogs	786	75.8%	338	57.4%	1,124	69.1%
Visitors with dogs	251	24.2%	251	42.6%	502	30.9%

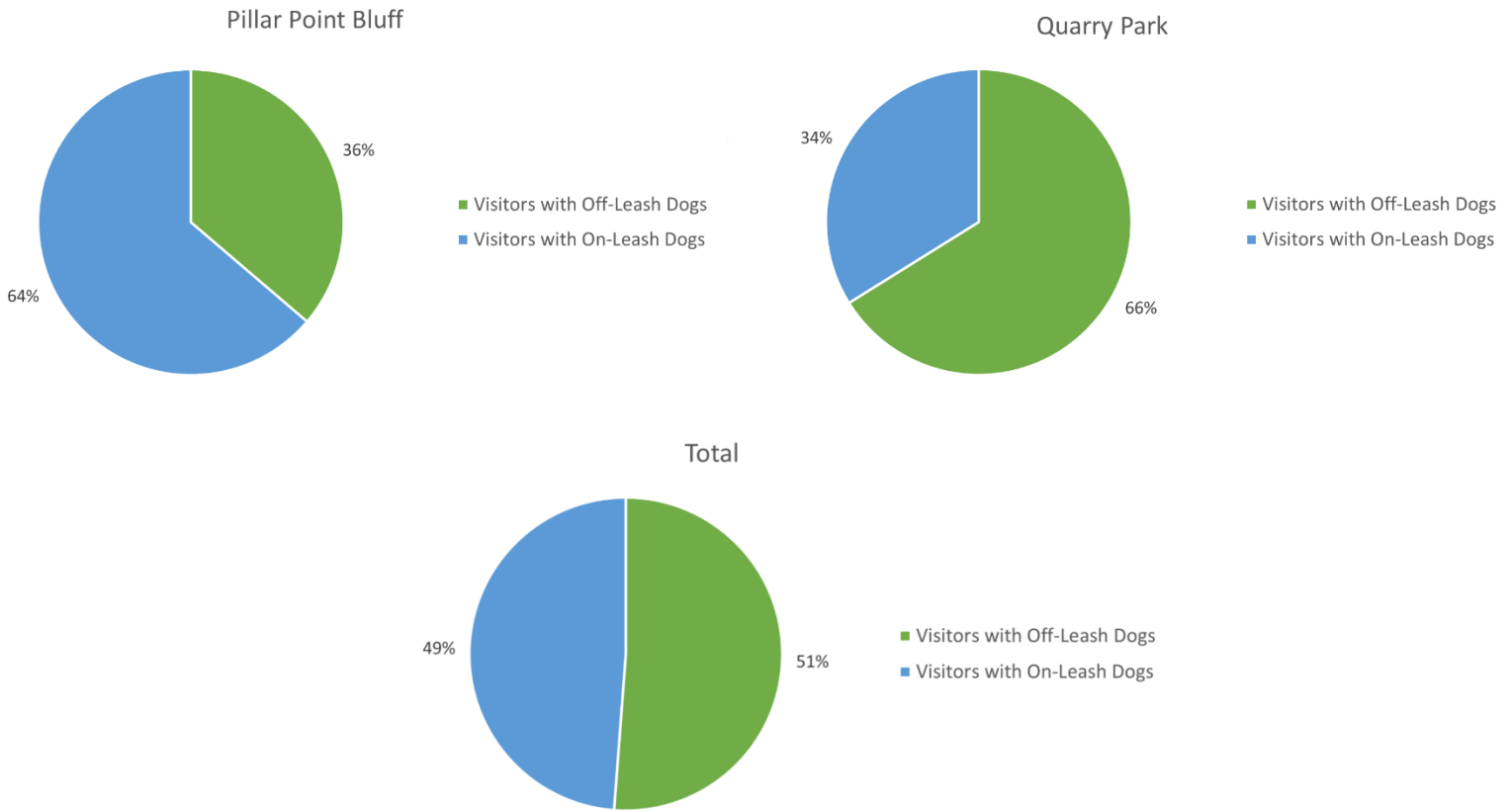
Table 4. Demographics of Visitors with Dogs at Pillar Point Bluff and Quarry Park, as measured from July 16, 2021 to October 14, 2021.

	Pillar Point Bluff		Quarry Park		Total	
Total visitors with dogs	251		251		502	
	Count	Percentage	Count	Percentage	Count	Percentage
Visitors with off-leash dogs	91	36.3%	166	66.1%	257	51.2%
Visitors with on-leash dogs	160	63.7%	85	33.9%	245	48.8%

Graph 3. Counts of Visitors with or without Dogs out of Total Visitors at Pillar Point Bluff and Quarry Park, as measured from July 16, 2021 to October 14, 2021.



Graph 4. Percentage of Visitors with Off-Leash or On-Leash Dogs out of Visitors with Dogs at Pillar Point Bluff and Quarry Park, as measured from July 16, 2021 to October 14, 2021.



II. Maps

Map 1. Dog Monitoring Criteria (excluding “Presence of Dog Waste”) at Pillar Point Bluff, as measured from July 16, 2021 to October 14, 2021.



Dog Recreation Incidents: Pillar Point Bluff

0 0.25 0.5 Kilometers



Map 2. Dog Waste Observations at Pillar Point Bluff, as measured from July 16, 2021 to October 14, 2021.

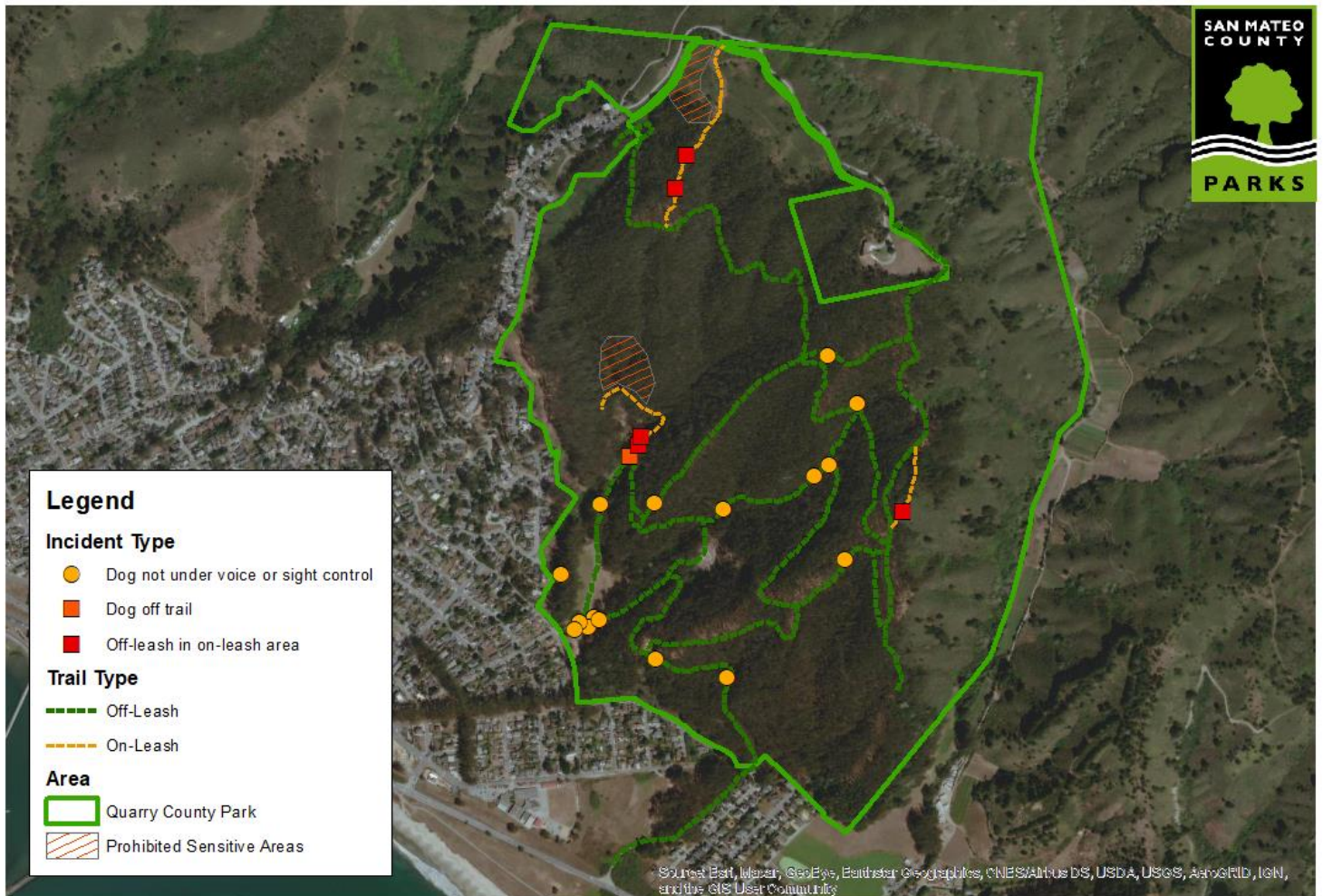


**Dog Recreation Incidents:
Pillar Point Bluff**

0 0.25 0.5 Kilometers



Map 3. Dog Monitoring Criteria (excluding “Presence of Dog Waste”) at Quarry Park, as measured from July 16, 2021 to October 14, 2021.

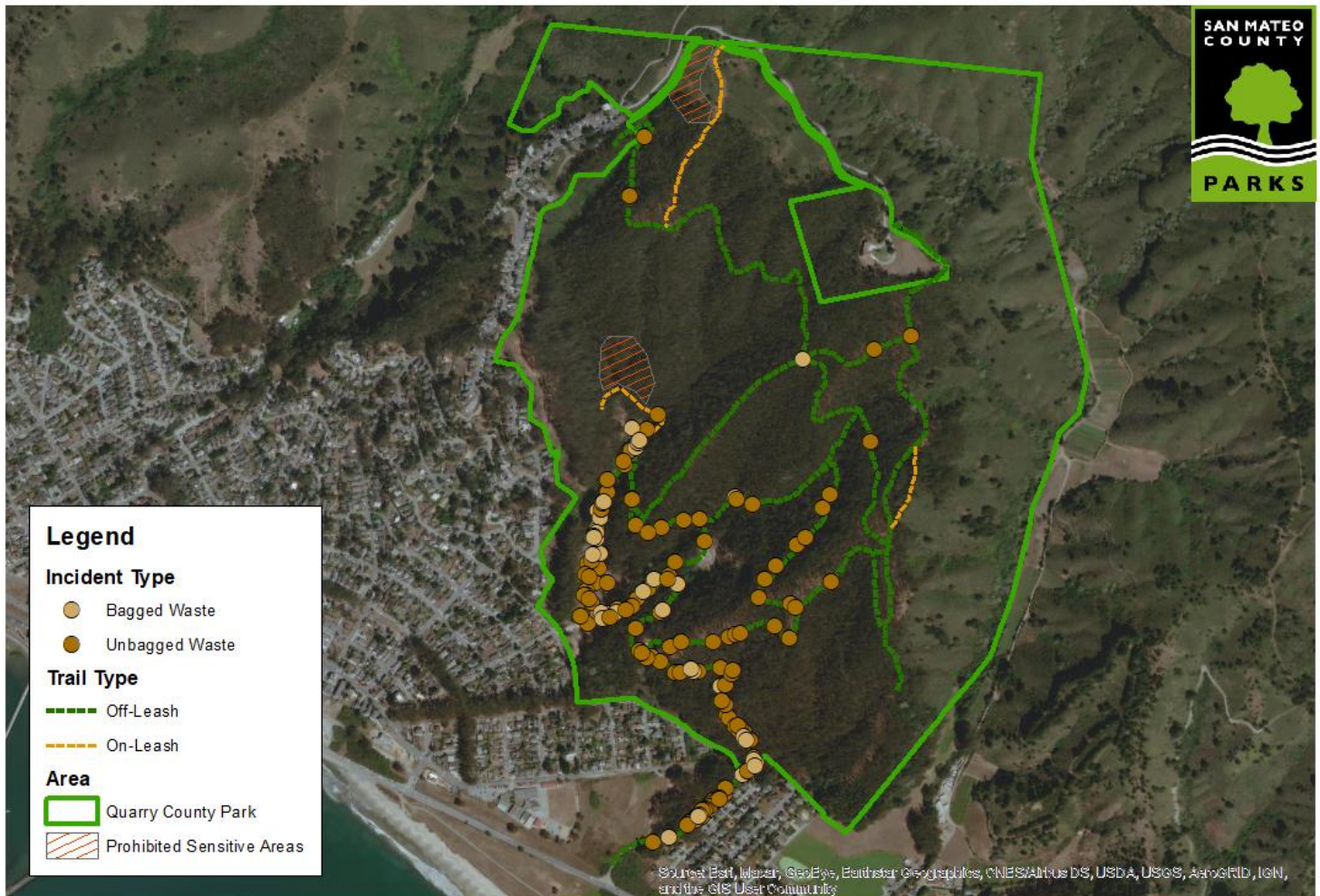


Dog Recreation Incidents: Quarry Park

0 0.25 0.5 Kilometers



Map 4. Dog Waste Observations at Quarry Park, as measured from July 16, 2021 to October 14, 2021.



**Dog Recreation Incidents:
Quarry Park**



III. Summary of Results

Out of the indicators monitored under the Adaptive Management Plan, there were two in which observations exceeded the set standards: presence of dog waste and dog entry to sensitive areas. For dog waste, observations were not to exceed more than 20 per month per park; in reality, an average of 46 instances per month was observed at Pillar Point Bluff and an average of 55 instances per month at Quarry Park. Pillar Point also had four observed dog entries into sensitive areas, which exceeds the Adaptive Management Plan standard of none.

Looking at visitor demographics, Pillar Point Bluff had more overall visitors throughout this time frame with 1,037 visitors total; by contrast, Quarry Park had 589 visitors total, bringing the two parks to an overall total of 1,626 visitors. Between the two, Quarry Park was more popular with visitors with dogs, with 42.6% of its total visitors bringing dogs while only 24.2% of visitors at Pillar Point Bluff had dogs. Of these visitors with dogs, Quarry Park was more popular among those who let theirs off-leash. 66.1% of visitors with dogs at Quarry Park let their dogs off-leash, while 33.9% left them on-leash; at Pillar Point, the opposite is true, with 36.3% of dogs being off-leash and 63.7% on-leash.