



CONNECT
THE COASTSIDE



Connect the Coastsides Presentation

Workshop #1 Opportunities and Constraints

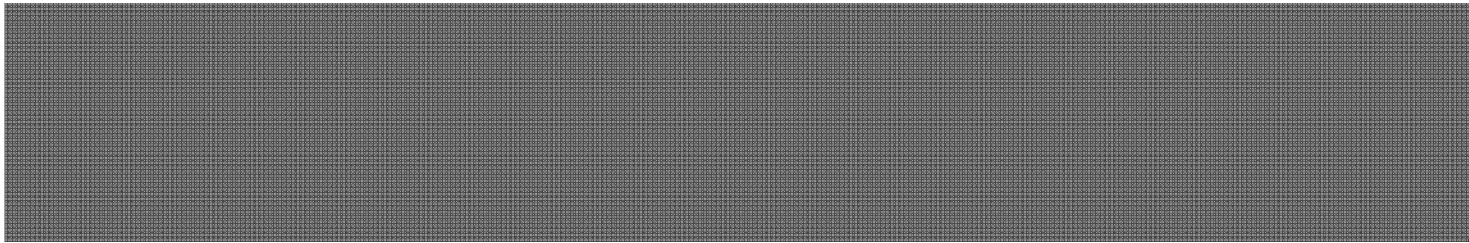


November 10, 2014



Tonight's Presentation

- Project Overview and Schedule
- Existing Transportation Conditions
- Build-out Analysis, Traffic Projections and Deficiencies
- Possible Solution Options



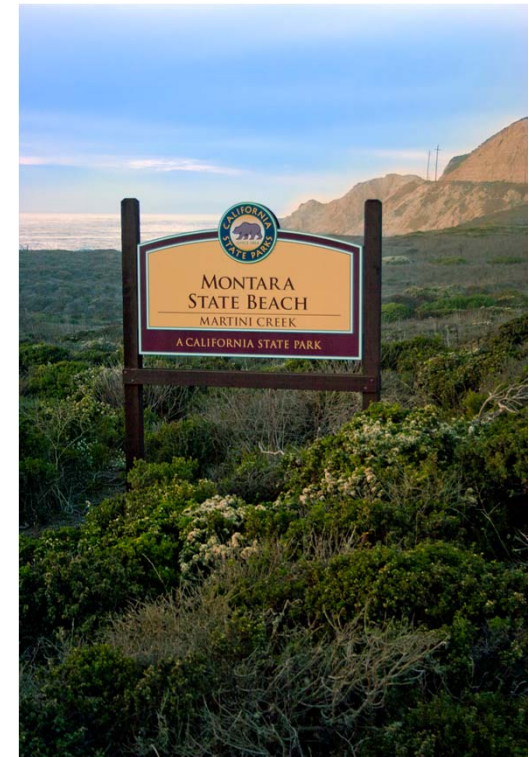
Project Overview and Schedule





What is Connect the Coastsides?

➔ The Plan will identify measures to ensure future residential and non-residential development can be supported by the future transportation system and infrastructure.



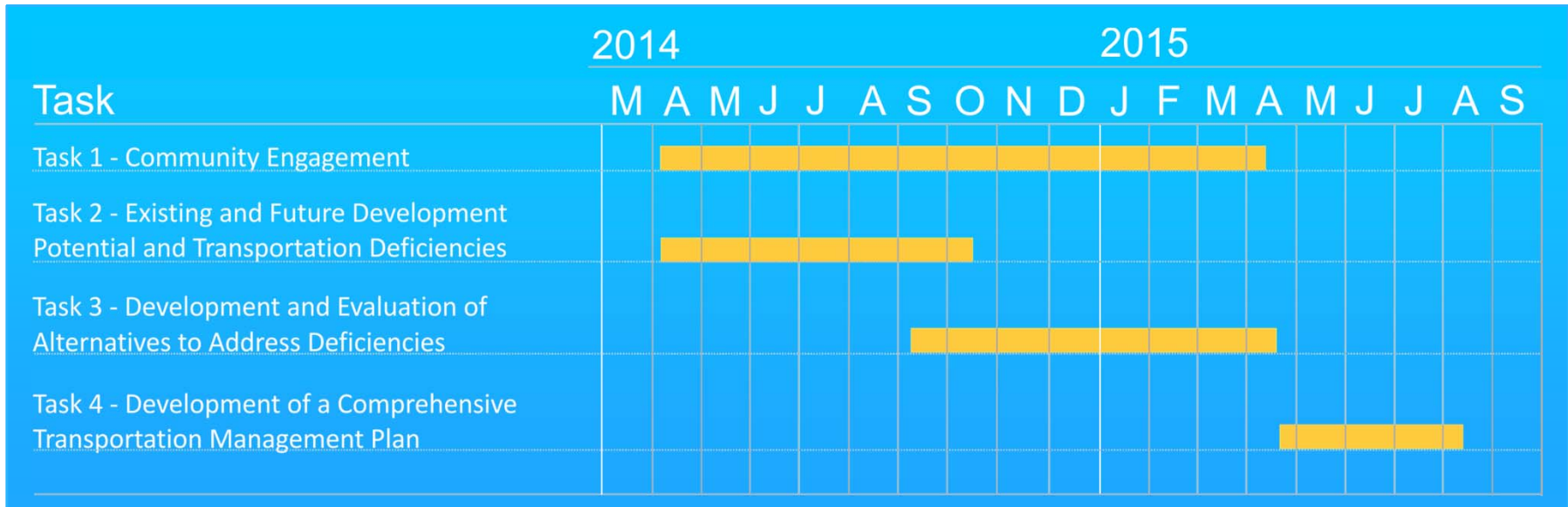


Project Objectives

- Estimate the buildout development potential of the Midcoast and Half Moon Bay
- Identify the potential impacts of growth on traffic, mobility and safety
- Identify and evaluate measures to minimize and mitigate the impacts of growth
- Develop a plan for funding and implementing multi-modal transportation improvements



Project Schedule



Workshop #1: Opportunities and Constraints - November 2014

Workshop #2: Alternatives - March 2015

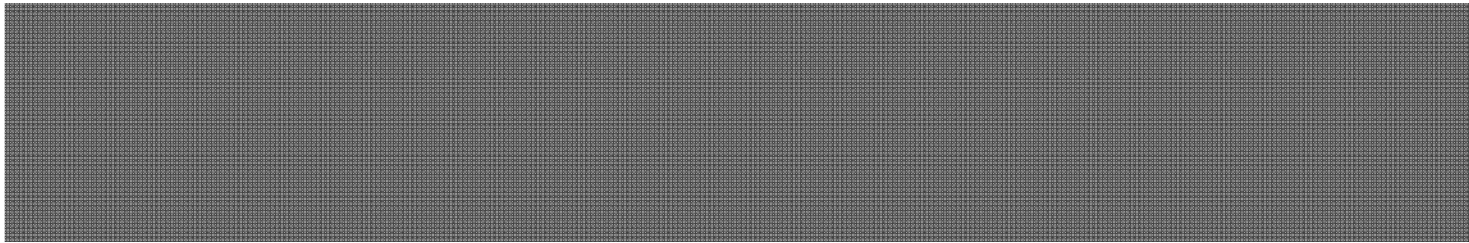
Workshop #3: Draft Plan - May 2015





Coordination with Other Studies

- Highway 1 Safety and Mobility Improvement Studies
- Highway 1 Congestion Management Project
- City of Half Moon Bay General Plan Update
- Plan Princeton
- San Mateo County Congestion Management Plan
- Recreation Parking Assessment



Existing Transportation Conditions

DKS





First Step: Review Existing Conditions on the Coastside

- What are the current conditions for
 - Traffic
 - Local Bus Service
 - Bicycle/Pedestrian Access and Routes
 - Available Parking

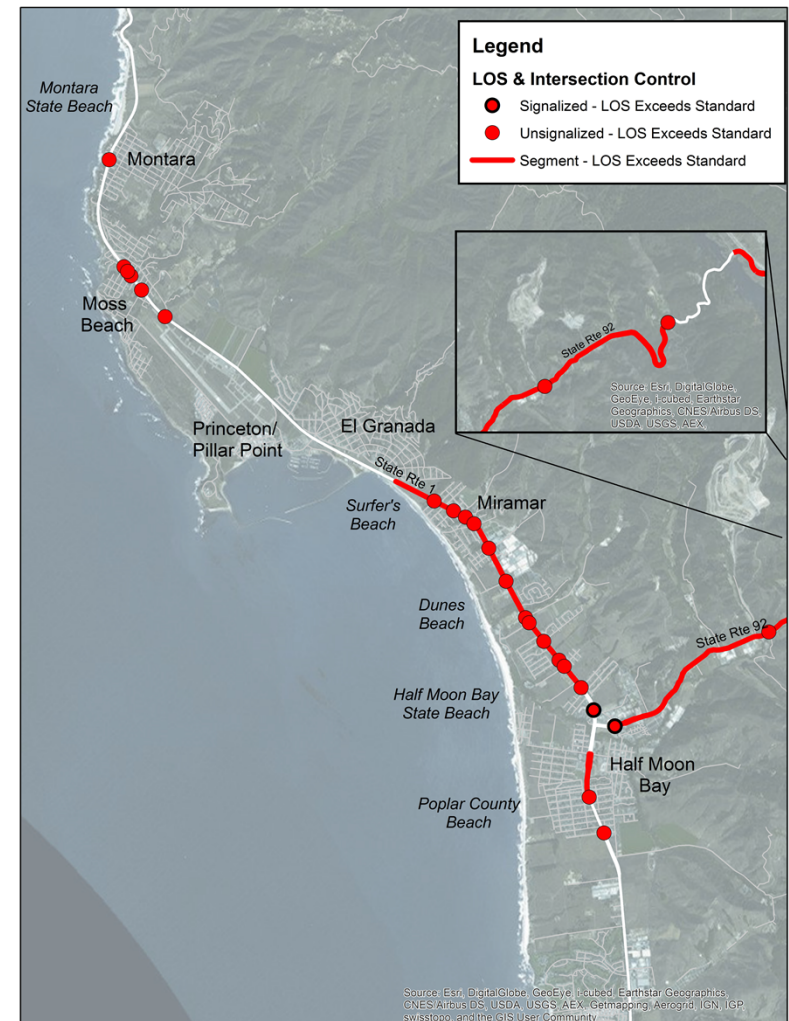




Existing Traffic Deficiencies

- We measured traffic conditions at:
 - 48 Intersections along Highway 1, SR 92 and Main St, and
 - 47 road segments along Highway 1 and SR 92
- Many intersections and segments exceed LOS standards

DKS





Existing Transit Conditions

- 2 fixed routes (17, 294)
- Infrequent service, particularly on weekends
- Lack of special event service/shuttles for recreational users
- Limited regional connections (BART, Caltrain, job centers)

DKS





Existing Pedestrian Conditions

➔ Lack of connectivity between communities and within communities





Existing Pedestrian Conditions

- ➔ Highway 1 is a major connector but lacks designated pedestrian facilities
- ➔ Improved crossings could increase pedestrian safety

DKS





Existing Bicycle Conditions

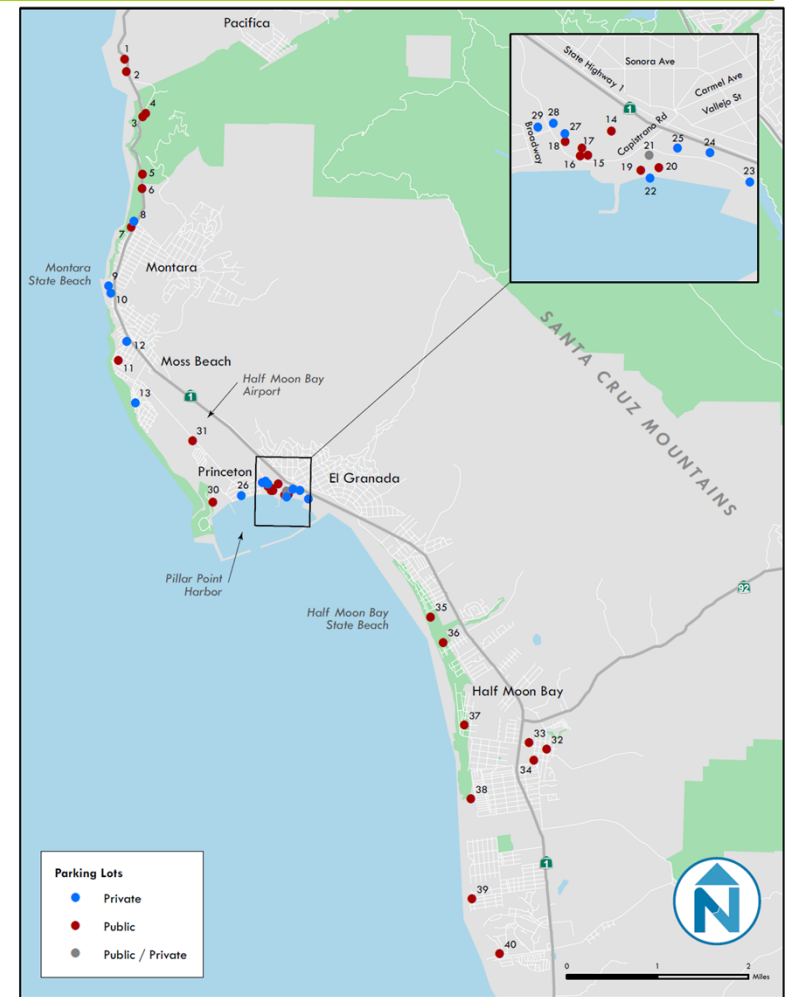
- Highway 1 lacks designated bicycle facilities
- Major gaps in the network
- Lack of bicycle parking at major recreational destinations

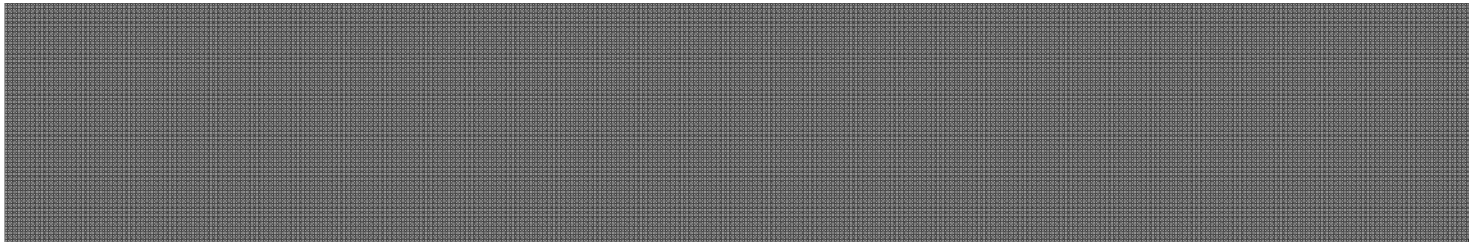




Existing Parking Conditions

- Lack of sufficient parking for coastal access and recreation during peak times
- Need for more wayfinding signage





Buildout Analysis, Traffic Projections and Deficiencies





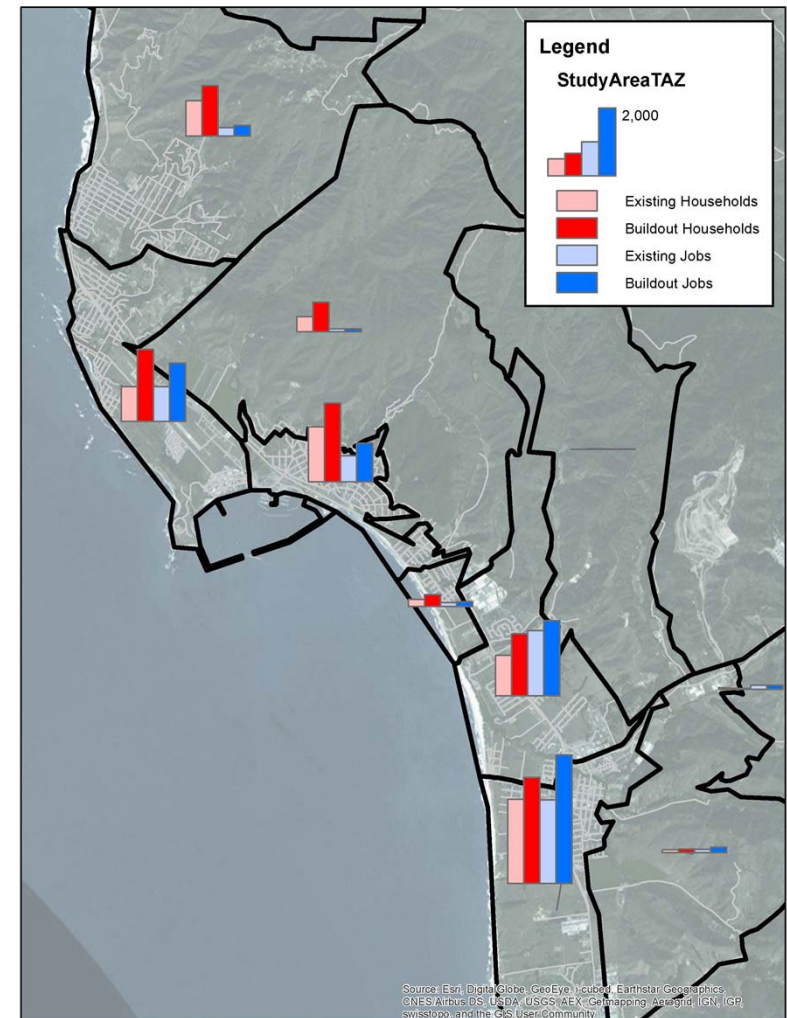
Looking Ahead

- Where is Future Development Permitted Under Current Zoning?
 - Vacant Land
 - Underutilized Commercial Land
 - Residential Land on Large Parcels



Initial Buildout Projections for Development - 2040

- Overall Increase in Homes and Apartments of 4,287 Units at Build-out (51% Increase)
- Overall Increase in Jobs of Approximately 2,919 (42%)





Future Travel Forecast

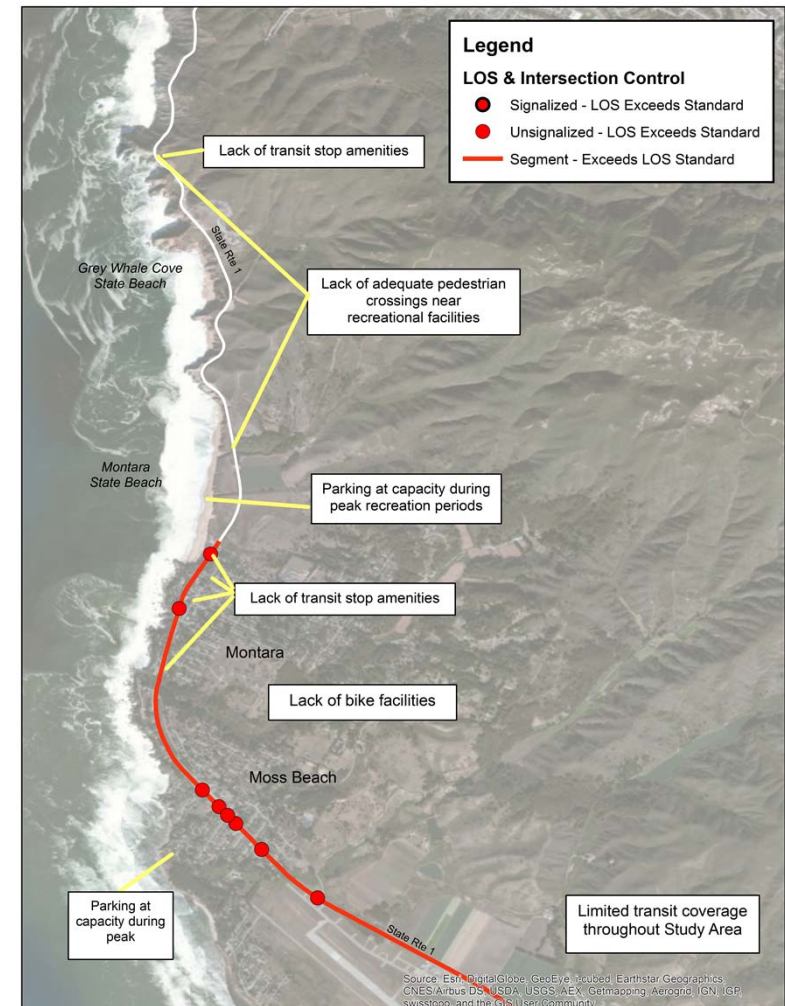
- San Mateo County C/CAG-VTA travel demand model
- Current year to 2040 model growth
- 10%-50% growth in traffic along Hwy 1
- 15%-35% growth in traffic along SR 92



Future Transportation Issues

- Montara and Moss Beach
- Roadway LOS
- Parking Capacity
- Transit Service and Stop Amenities
- Pedestrian Crossings
- Bicycle Facilities

DKS

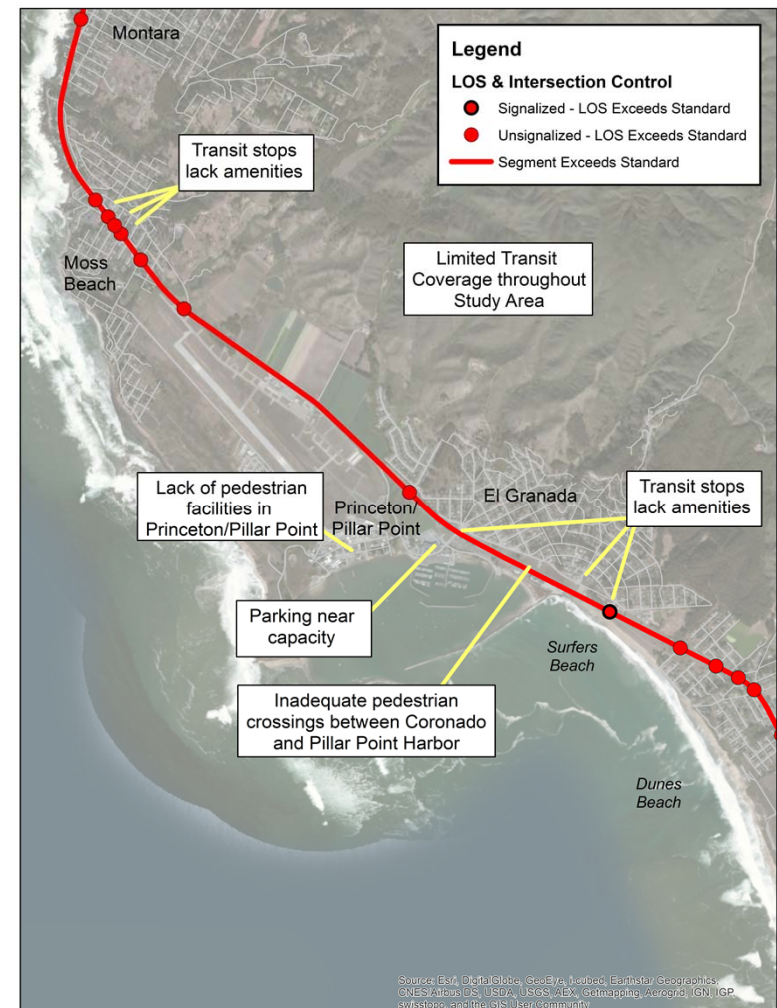




Future Transportation Issues

- El Granada and Miramar
- Roadway LOS
- Parking Capacity
- Transit Service and Stop Amenities
- Pedestrian Crossings

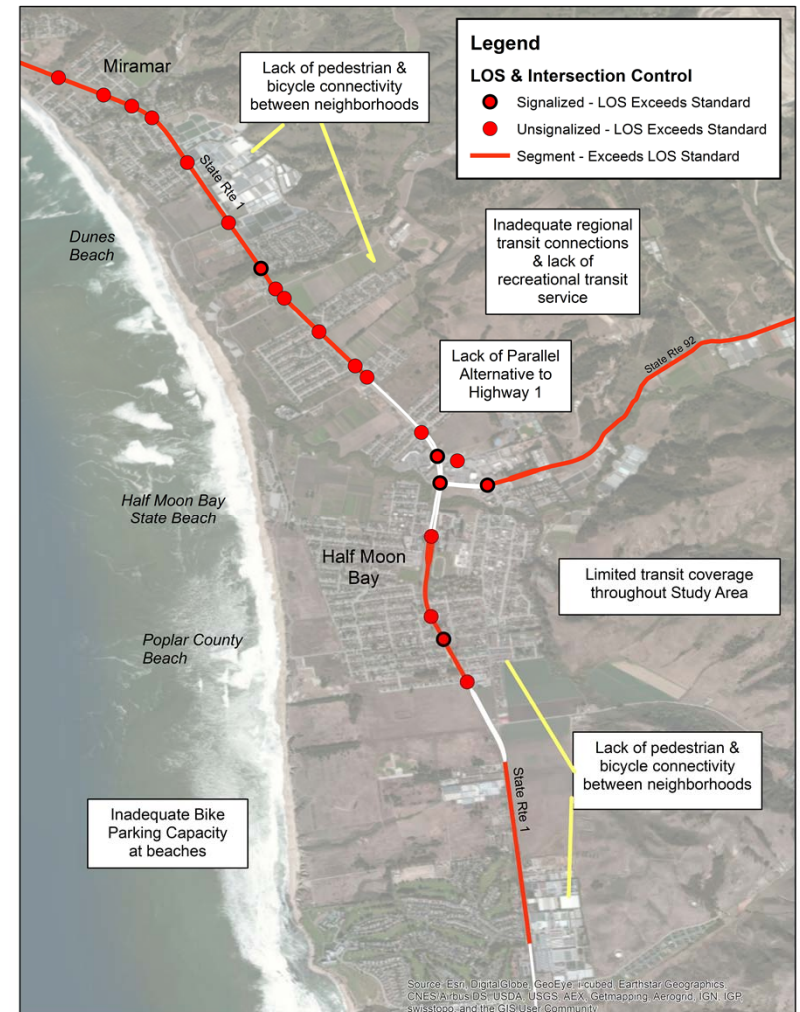
DKS





Future Transportation Issues

- Half Moon Bay
- Roadway LOS - Lack of alternative to Hwy 1
- Limited transit linkage to Regional Service
- Lack of Pedestrian and Bicycle Connectivity and Hwy 1 Crossings
- Need for bicycle parking at Beaches

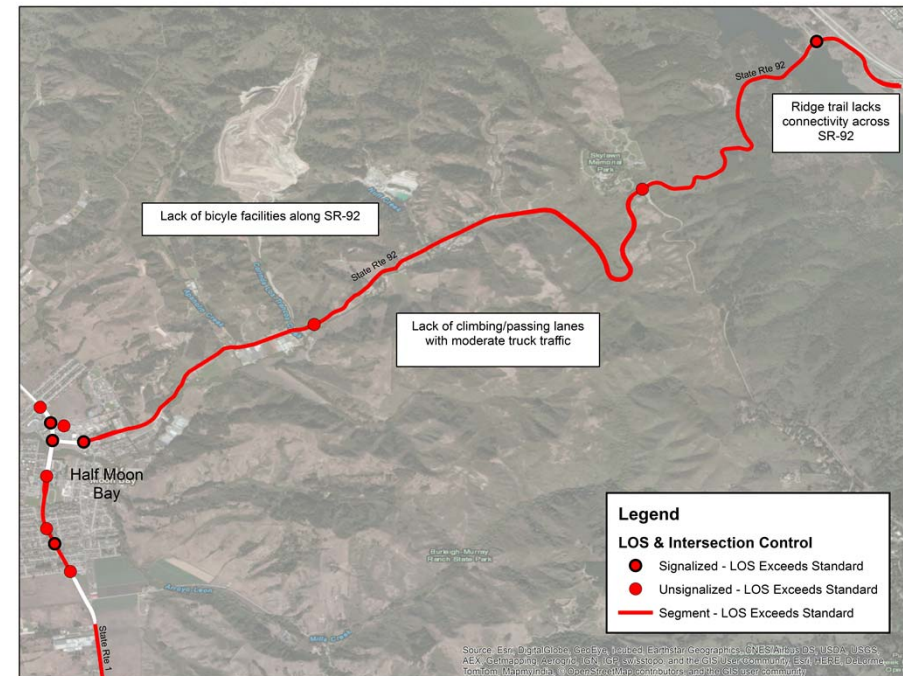


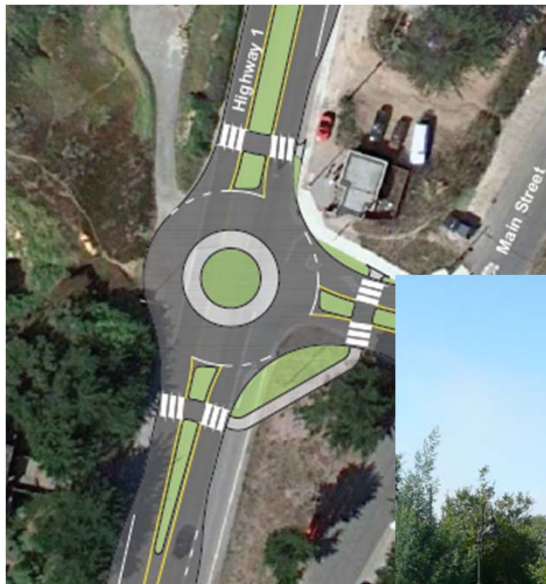
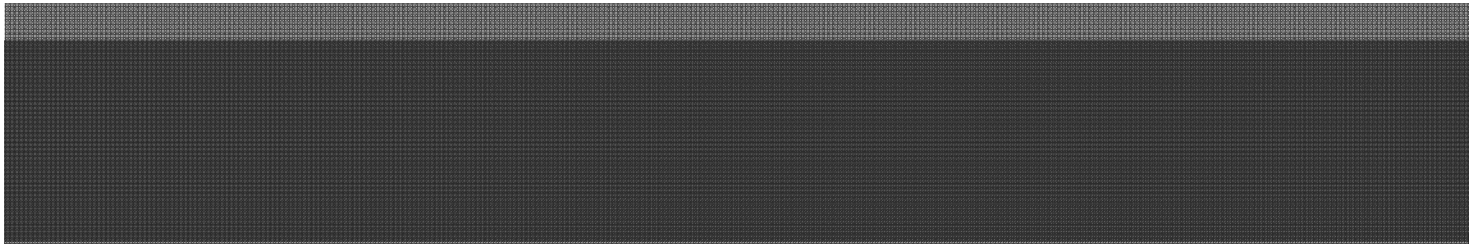


Future Transportation Issues

➤ SR 92 East of Half Moon Bay

- Roadway LOS
- Lack of Bicycle Lanes
- Ridge Trail Lacks SR 92 Crossing
- Climbing/Passing Lane Need





Potential Solution Options





Potential Solution Options

➤ Pedestrian and bicycle improvements

- Illuminated pedestrian crossings
- Connect existing sidewalks and remove obstacles
- Extension of multiuse along Highway 1
- Addition of bike lanes o Hwy 1 and SR 92

➤ Transit improvements

- Increase bus frequency
- Improved shelters
- Shuttle connections to BART and Caltrain
- Shuttles for special events





Potential Solution Options

➤ Gray Whale Cove Parking Lot

- Striped highway crossing
- Left turn bay
- Acceleration lane

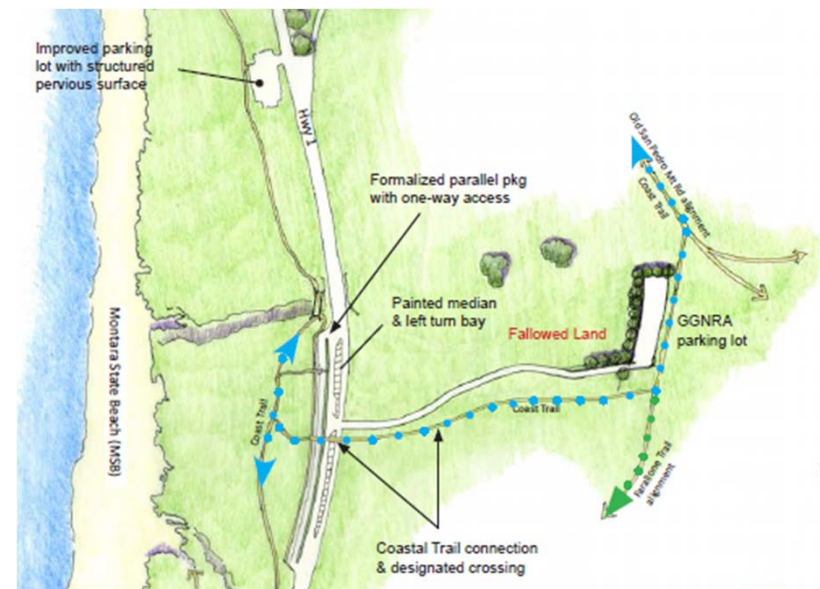




Potential Solution Options

➤ Montara Beach and Trail Access

- Striped highway crossing
- Formalized parallel beach parking

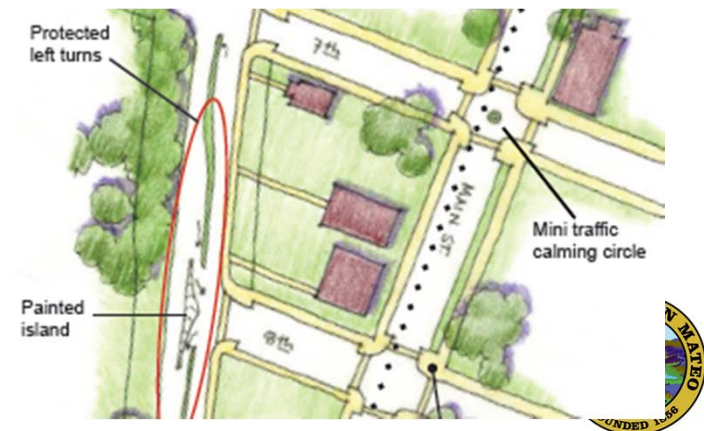
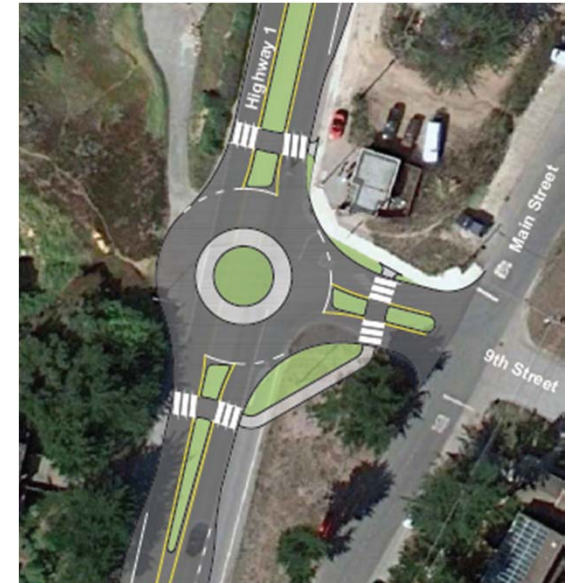




Potential Solution Options

➤ Montara

- Raised medians
- Restrict and consolidated left turns
- Designated pedestrian crossings
- 9th Street roundabout





Potential Solution Options

➤ Moss Beach

- Parallel trail
- Medians to manage access
- Roundabouts at gateway intersections

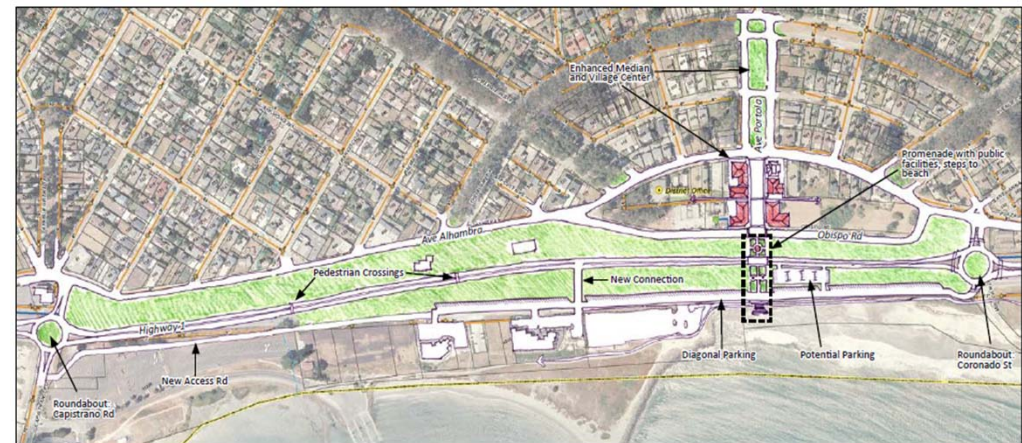




Potential Solution Options

➤ El Granada

- Parallel access road
- Striped pedestrian crossings
- Roundabouts at gateway intersections





Potential Solution Options

➤ Half Moon Bay

- Alternative parallel route to Highway 1





Next Steps

- Planning Commission
Wednesday, December 2014
- Development and
Evaluation of Alternatives
- Workshop #2:
Alternatives, March 2015

DKS

