



County of San Mateo  
Department of Public Works

**Pescadero Community  
Water System  
(County Service Area No. 11)**

***Public Meeting Regarding CSA 11  
Finances and Operation***

Native Sons Hall  
October 21, 2014  
7:00 PM



County of San Mateo  
Department of Public Works

## Agenda

1. Overview of CSA-11 Water System
2. Water Usage
3. Operation and Maintenance
4. New Well & Storage Tank Project
5. State Adopted Regulations – Water Conservation
6. Water Rates
7. Current Financial State of CSA-11



County of San Mateo  
Department of Public Works

## 1. Overview of CSA-11 Water System

- Reasons for the formation of CSA-11:
  - 40% of private wells were shallow and had high concentration of nitrate and bacteria
  - Community petition.
  - An aquifer of adequate size and quality was available.
- Provides water to 100 customers within CSA-11 boundary:
  - 80 Residential (Single and Multi-Family)
  - 14 Commercial (Stores, Restaurants)
  - 6 Others (Fire Station, School, Church)



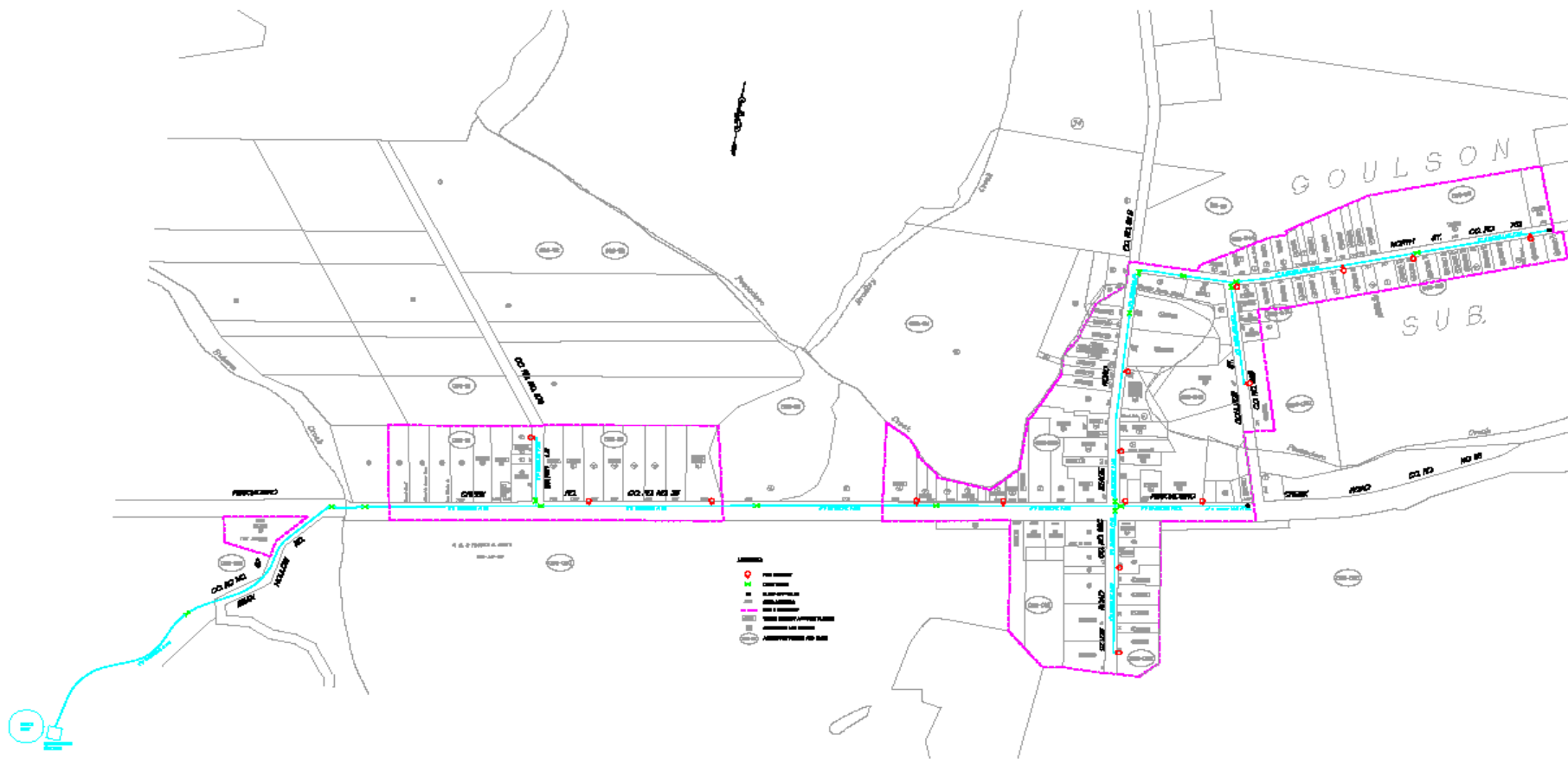
County of San Mateo  
Department of Public Works

## 1. Overview of CSA-11 Water System

- CSA-11 boundaries are contiguous with the Urban/Rural Service Boundary as defined in the General Plan and Local Coastal Program.



# County of San Mateo Department of Public Works





County of San Mateo  
Department of Public Works

## 1. Overview of CSA-11 Water System

- Well and pump systems constructed and put in operation in 1992:
  - Storage tank – 140,000 gallon capacity
  - Well #1 – Production well; Drilled and developed in 1992
  - Well #2 – Standby/emergency well; Drilled in 1983; Developed in 1992
  - Alarm and telemetry system
  - Cathodic protection for storage tank to prevent corrosion
  - Chlorination building



County of San Mateo  
Department of Public Works

## 1. Overview of CSA-11 Water System

- Distribution system also constructed and put in operation in 1992:
  - 8" diameter water main – 7,960 linear feet
  - 6" diameter water main – 2,570 linear feet
  - 4" diameter water main – 1,130 linear feet
  - Backflow prevention devices and valves
  - Service laterals and meter boxes
  - 17 fire hydrants



County of San Mateo  
Department of Public Works

## 1. Overview of CSA-11 Water System

- Administration, Operation, and Maintenance of CSA-11:
  - County Board of Supervisors is the governing body.
  - Regulation compliance oversight – California Regional Water Quality Control Board Division of Drinking Water (County Environmental Health Services prior to July 1, 2011)
    - ✓ Permit to operate
    - ✓ Water quality monitoring and testing





County of San Mateo  
Department of Public Works

## 1. Overview of CSA-11 Water System

- Administration, Operation, and Maintenance of CSA-11:
  - Department of Public Works provides staff for administration and assisting contract operator with operation and maintenance of CSA-11, as well as CSA-7.
  - State Certified Contract Operator – Bracewell Engineering who is responsible for operating and maintaining system.

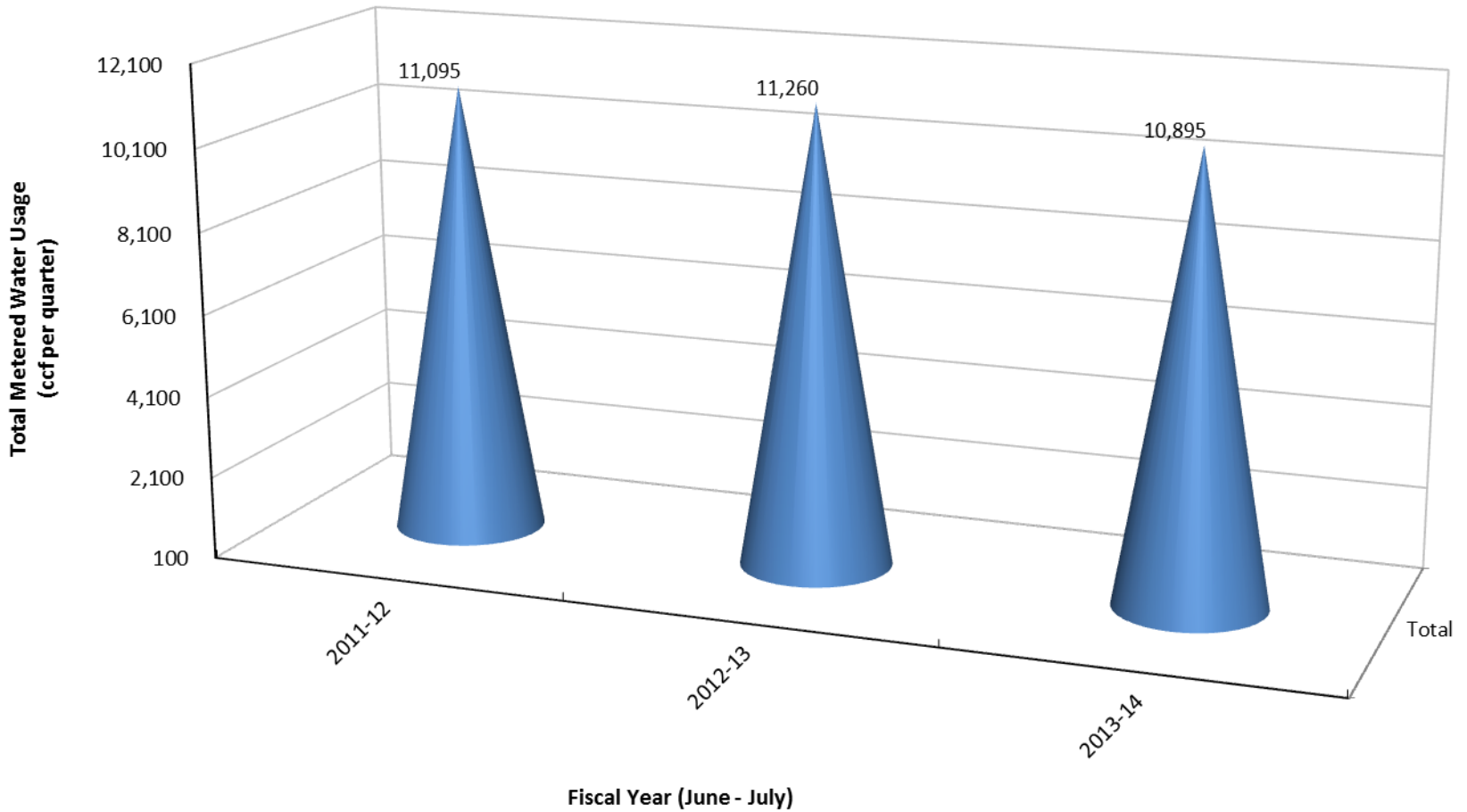


County of San Mateo  
Department of Public Works

## 1. Overview of CSA-11 Water System

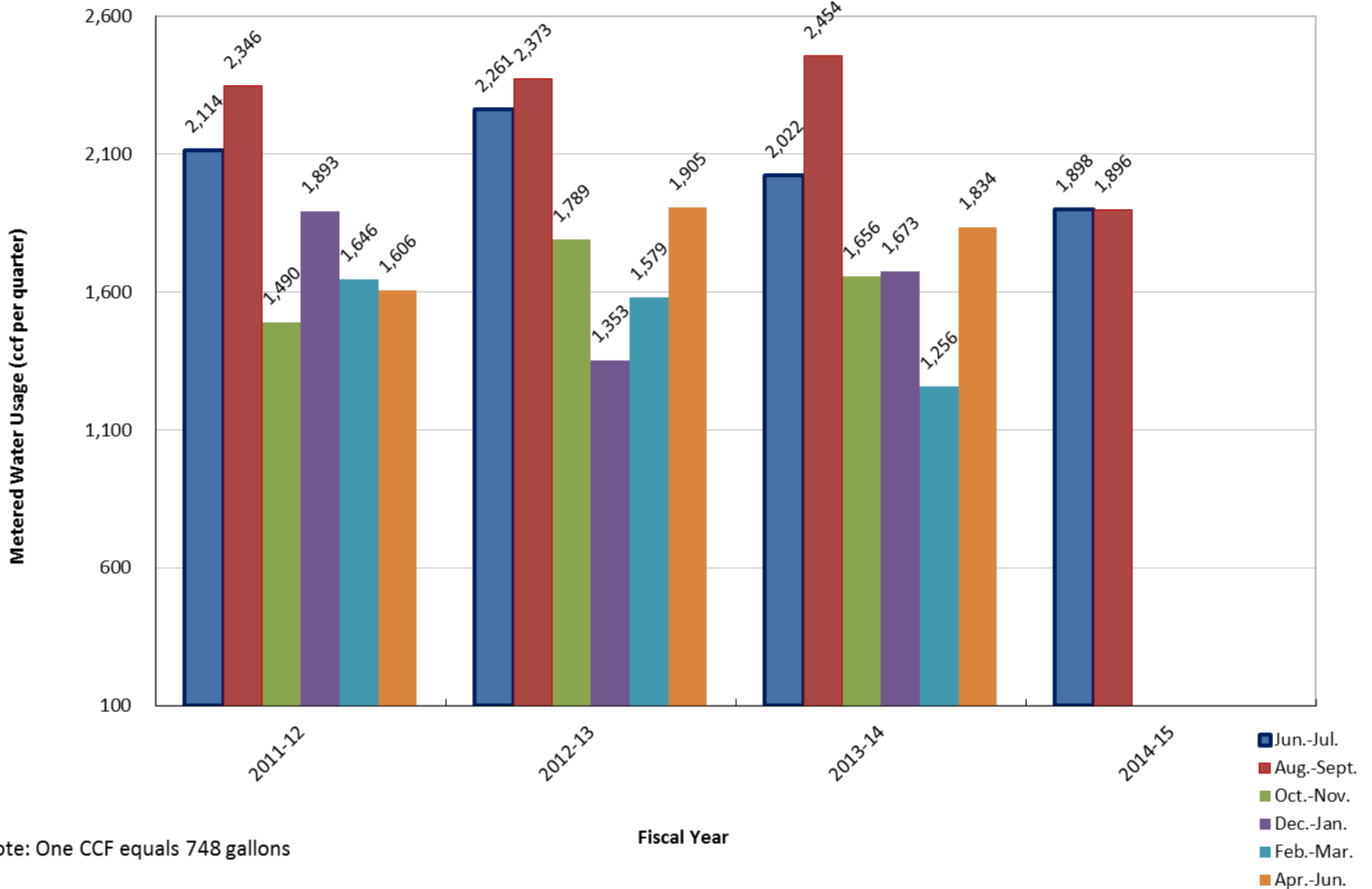
- Coastal Development Permit – Service Rates
  - Rates structured to discourage unnecessary water consumption.
  - Customers encouraged to maintain on-site wells for non-potable uses (landscape, etc.).
  - Portion of revenue to be reserved for new water source research.

## CSA-11 3-Year Water Usage Summary (From Bi-Monthly Meter Readings)



Note: One CCF equals 748 gallons

## CSA-11 3-Year Water Usage Summary (From Bi-Monthly Meter Readings)





## 3. Operation and Maintenance

### ➤ 2012 Priorities:

- Provide operation & maintenance per State approved O&M Plan (**On-going**)
- Inspect Well #1, replace intake piping (**Completed**)
- Upgrade alarm system (**In-progress**)
- Inspect tank cathodic protection (**In-progress**)
- Electrical system pump protection upgrade (**In-progress**)

### ➤ Long-term Capital Improvements:

- Limitation of aquifer (**Prop. 84 Project will add deeper well**)
- Additional storage capacity (**Prop. 84 Project will add new 140,000 gallon tank**)
- Commercial fire flow capability (**To be addressed**)



## 3. Operation and Maintenance

### ➤ Routine maintenance:

- By Bracewell Engineering in accordance to State approved O&M Plan.
- All water quality testing per State requirements.
- Completed annual flushing program in 2013.
- Monitoring water surface elevations in Well #1 monthly.
- Existing storage tank to be cleaned and inspected on Oct. 24, 2014 (No interruption of service anticipated).



## 4. New Well & Storage Tank Project

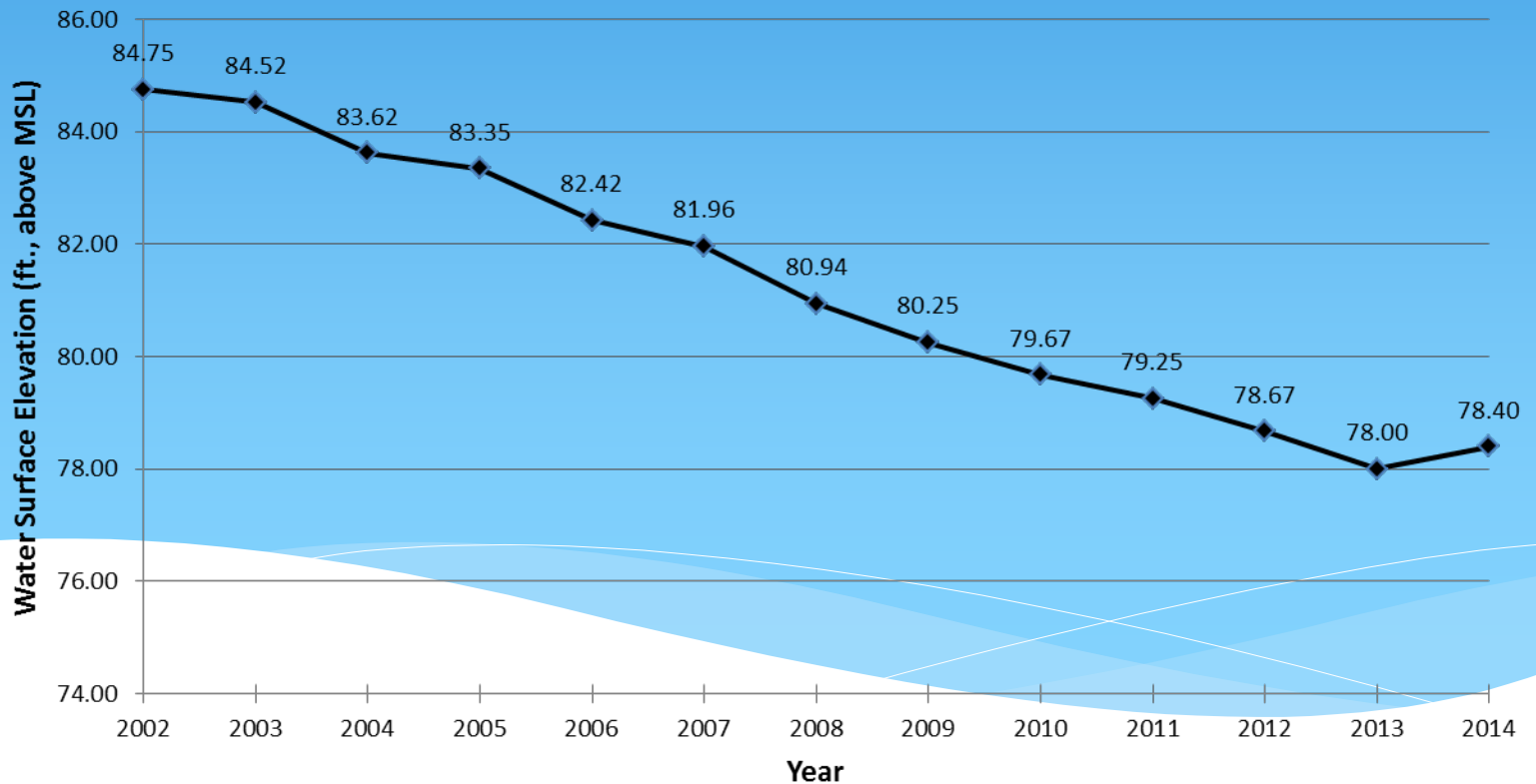
- March 2002 - Todd Engineers completed an assessment report on CSA-11:
  - Well #1 was estimated to service the community for 25 years (in service since 1992).
  - Todd Engineers' assessment indicated well failure could occur in 8 to 15 years (between 2010 and 2017).
  - Recommendations included installation of a new, deeper well (100' below sea level), which could increase the aquifer lifespan to 38 years.



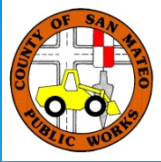
# County of San Mateo Department of Public Works

## Well #1 Water Surface Elevation Changes from 2002-2014

CSA 11 - Well Water Elevation (Well #1)







County of San Mateo  
Department of Public Works

## 4. New Well & Storage Tank Project

- Received Prop. 84 Grant for \$700,000:
  - New deeper well (100' below sea level).
  - New 140,000 gallon storage tank.
  - New fences to protect well heads and storage tanks.
  - Water conservation program.
- General Fund of \$140,000 for non-eligible costs
- Anticipated to be constructed in Spring/Summer of 2015



## 5. State Adopted Regulations – Water Conservation Effective 7/29/2014

### Regulations applicable to all Californians:

-	Application of potable water to any driveway or sidewalk.
-	Using potable water to water outdoor landscapes in a manner that causes runoff to adjacent property, non-irrigated areas, private or public walkways, roadways, parking lots or structures.
-	Using a hose that dispenses potable water to wash a motor vehicle, unless the hose is fitted with a shut-off nozzle.
-	Using potable water in a fountain or decorative water feature, unless the water is recirculated.

**\*\*\* The taking of any action prohibited above, in addition to any other applicable civil or criminal penalties, is an infraction, punishable by a fine of up to \$500 for each day in which the violation occurs. \*\*\***



## 5. State Adopted Regulations – Water Conservation Effective 7/29/2014

### **Mandatory actions by small water suppliers (CSA 11)**

Take one or more of the following actions:

-	Limit outdoor irrigation of ornamental landscapes or turf with potable water to no more than 2 days per week; or
-	Implement another mandatory conservation measure or measures intended to achieve a comparable reduction in water consumption relative to the amount consumed in 2013.

For more  
information

[http://www.swrcb.ca.gov/waterrights/water\\_issues/programs/drought/emergency\\_regulations\\_waterconservation.shtml](http://www.swrcb.ca.gov/waterrights/water_issues/programs/drought/emergency_regulations_waterconservation.shtml)

Link also posted on the Department of Public Works' web page under "Information for Residents", "Utilities", "Water Services".



County of San Mateo  
Department of Public Works

## 6. Water Rates

	2003-2012 Rates (Non-Tiered)	Current Rates (Tiered)
5/8" Meter Monthly Service Charge	\$22	\$28
1-1/2" Meter Monthly Service Charge	\$33	\$42
Tier 1 Water Rate (0-11 HCF)	\$1.38	\$2.69
Tier 2 Water Rate (12-25 HCF)	N/A	\$4.04
Tier 3 Water Rate (26-40 HCF)	N/A	\$5.45
Tier 4 Water Rate (> 40 HCF)	N/A	\$7.36

HCF – Hundred Cubic Feet (1 HCF equals approximately 748 gallons.)

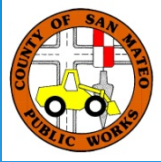


County of San Mateo  
Department of Public Works

## 6. Water Rates

	CSA - 11	Other Water Agency Rates		
No. of Customers	100	6,583	12,412	1,656
	Current Rates	Coastside County Water	North Coast County Water	Montara Water & Sanitary
5/8" Monthly Meter Service Charge	\$28	\$20.07	\$13.38	\$25.59
1-1/2" Monthly Meter Service Charge	\$42	\$97.08	\$22.48	\$46.06
Tier 1 Water Rate Bi-Monthly	\$2.69 (0-11 HCF)	\$6.55 (1-8 HCF)	\$2.72 (0-5 HCF)	\$7.43 (0-6 HCF)
Tier 2 Water Rate Bi-Monthly	\$4.04 (12-25 HCF)	\$7.22 (9-25 HCF)	\$6.03 (6-16 HCF)	\$9.91 (7-13 HCF)
Tier 3 Water Rate Bi-Monthly	\$5.45 (26-40 HCF)	\$9.38 (26-40 HCF)	\$8.63 (17-28 HCF)	\$12.39 (14-27 HCF)
Tier 4 Water Rate Bi-Monthly	\$7.36 (> 40 HCF)	\$11.61 (> 40 HCF)	\$15.83 (> 28 HCF)	\$17.35 (> 27 HCF)

HCF – Hundred Cubic Feet (1 HCF equals approximately 748 gallons.)



County of San Mateo  
Department of Public Works

## 7. Current Financial State of CSA-11

- Receives no property taxes because CSA-11 was formed after implementation of Proposition 13.
- Revenue from water sales and meter service charge.
- Current rates adequately support system operation and maintenance activities, but not capital improvements or system replacement.



County of San Mateo  
Department of Public Works

## 7. Current Financial State of CSA-11

- Deficit of \$58,800 on 6/30/2013 (Required loan to CSA-11).
- Fund reserve as of 6/30/2014 - \$42,358.
- Fund reserve as of 10/7/2014 - \$52,020.
- FY 2013-14 revenue from service fees and water usage - \$79,487 (actual).
- FY 2013-14 expenditures for operation & maintenance - \$44,711:
  - \$18,995 for Bracewell Engineering
  - \$8,423 for replacement of 10-hp pump in Well #1 with a 7.5-hp pump and video inspect well casing
  - \$17,293 for other charges (County staff for administration/meter reading/billing, maintenance equipment, electricity)



County of San Mateo  
Department of Public Works

Thank You!