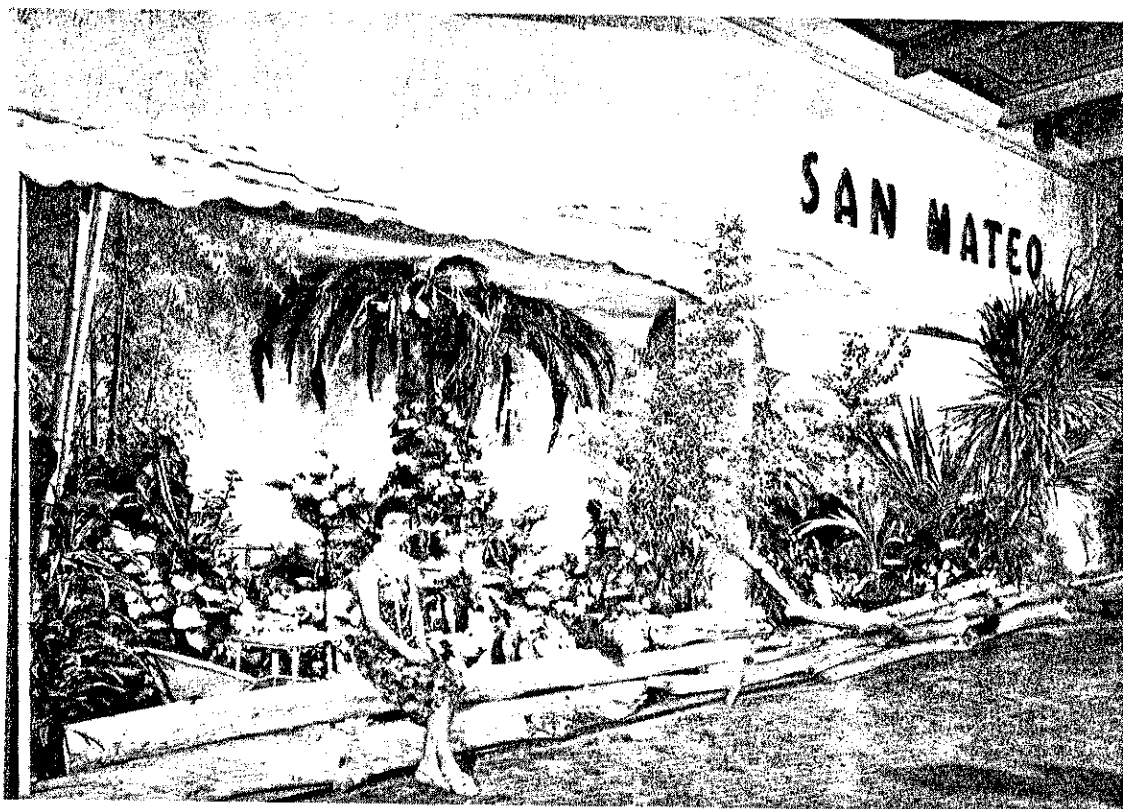


AGRICULTURAL REPORT 1960



Our 1960 State Fair Exhibit

SAN MATEO COUNTY
DEPARTMENT OF AGRICULTURE

10015

ANNUAL CROP REPORT

VEGETABLE CROPS

Crop	Year	Harvested Acreage	Production		Unit	Value	
			Per Acre	Total		Per Unit	Total
Anise	1960	5	14.0	69	Ton	118.92	\$ 8,205.00
	1959	2	14.0	28	"	116.10	3,251.00
Artichoke Total	1960	1,198	2.76	3,310	"	163.19	540,160.00
	1959	1,310	3.02	3,955	"	148.61	587,750.00
Fresh Mkt.	1960	1,198	2.49	2,988	"	170.00	507,960.00
	1959	1,310	2.33	3,054	"	160.00	488,640.00
Processing	1960			322	"	100.00	32,200.00
	1959			901	"	110.00	99,110.00
Beans, Green	1960	29	4.20	122	"	220.00	26,840.00
	1959	26	2.70	54	"	225.00	12,150.00
Beets, Table	1960	20	8.3	167	"	144.00	24,048.00
	1959	14	8.3	117	"	156.00	18,252.00
Broccoli Sprouting	1960	59	2.00	118	"	150.00	17,700.00
	1959	12	2.75	33	"	120.00	3,960.00
Brussels Sprouts Total	1960	1,832	6.4	11,725	"	193.00	2,263,100.00
	1959	1,944	5.5	10,656	"	178.50	1,902,080.00
Fresh Mkt.	1960			1,170	"	130.00	152,100.00
	1959			800	"	160.00	128,000.00
Freezer	1960	1,832	6.4	10,555	"	200.00	2,111,000.00
	1959	1,944	5.5	9,856	"	180.00	1,774,080.00
Cabbage	1960	183	12.0	2,196	"	45.00	98,820.00
	1959	210	16.0	3,360	"	47.75	160,440.00
Calabresi	1960	8	3.5	28.0	"	410.00	11,480.00
	1959	14	3.4	48.1	"	420.00	20,202.00
Carrots	1960	18	8.27	149	"	110.00	16,390.00
	1959	23	8.26	190	"	118.00	22,420.00

VEGETABLE CROPS

(cont'd.)

Crop	Year	Harvested Acreage	Production		Unit	Value	
			Per Acre	Total		Per Unit	Total
Cauliflower	1960	3	13.30	40	Ton	56.00	\$ 2,240.00
	1959	12	10.58	127	"	81.50	10,350.00
Celery	1960	12	43.8	517	"	51.30	26,522.00
	1959	11	48.6	535	"	61.42	32,860.00
Celery Root	1960	14	4.28	60.0	"	125.00	7,500.00
	1959	14	4.27	59.8	"	150.00	8,970.00
Chives	1960						--
	1959	8	3.25	26	"	1,080.00	28,080.00
Chard	1960	44	13.10	578	"	80.00	46,240.00
	1959	39	13.10	512	"	85.00	43,520.00
Corn	1960	5	4.40	22.0	"	99.75	2,195.00
	1959	5	4.50	22.5	"	88.80	1,998.00
Dandelion Root	1960	7	6.0	42	"	155.00	6,510.00
	1959	7	6.0	42	"	150.00	6,300.00
Garlic	1960	5	3.00	15	"	360.00	5,400.00
	1959	2	2.50	5	"	400.00	2,000.00
Green Leaf* Vegetables	1960	38	6.0	229	"	87.38	20,010.00
	1959	27	6.0	163	"	93.60	15,162.00
Leeks	1960	17	17.4	296	"	100.00	29,600.00
	1959	16	17.6	282	"	95.00	26,752.00
Lettuce All var.	1960	324	9.95	3,225	"	82.81	267,053.00
	1959	324	9.50	3,081	"	91.32	282,054.00
Mushrooms	1960			1,500	"	720.00	1,080,000.00
	1959			1,500	"	700.00	1,050,000.00
Onions, Green	1960	3	10.00	30.00	"	177.76	5,333.00
	1959	3	10.11	30.35	"	182.20	5,530.00
Parsley	1960	23	10.0	230	"	180.00	41,400.00
	1959	22	10.0	220	"	195.00	42,900.00

* Includes: Collards, Kale, Mustard Greens, Rapini and Turnip Greens

VEGETABLE CROPS

(cont'd.)

Crop	Year	Harvested Acreage	Production		Unit	Per Unit	Value	
			Per Acre	Total				Total
Parsnips	1960	2	6.50	13.00	Ton	129.00	\$	1,677.0
	1959	1	6.37	6.37	"	113.34		722.0
Peas, Market	1960	545	2.55	1,390.0	"	185.00		257,150.0
	1959	536	2.48	1,334.6	"	270.00		360,342.0
Potatoes	1960	88	11.0	968.0	"	95.00		91,960.0
	1959	79	10.5	829.5	"	70.00		58,065.0
Radish	1960	76	12.5	950	"	90.00		85,500.0
	1959	81	12.5	1,012.5	"	90.00		91,125.0
Salsify	1960	1	5.6	5.6	"	200.00		1,120.0
	1959	1	5.6	5.6	"	205.00		1,148.0
Seasoning Plants	1960	2	2.5	5	"	4,000.00		20,000.0
	1959	4	2.5	10	"	4,000.00		40,000.0
Spinach	1960	34	2.44	83.0	"	176.00		14,608.0
	1959	23	2.24	51.7	"	180.00		9,306.0
Spinach New Zealand	1960	25	12.4	312	"	210.00		65,520.0
	1959	24	12.0	288	"	200.00		57,600.0
Squash Winter	1960	8	10.0	80	"	62.50		5,000.0
	1959	8	10.0	80	"	73.00		5,840.0
Summer	1960	7	11.2	79	"	143.00		11,297.0
	1959	10	11.2	112	"	157.12		17,597.0
Turnips	1960	2	5.5	11	"	144.00		1,584.0
	1959	5	5.0	25	"	154.00		3,850.0
Msc. Veg. Field Grown	1960	16						21,500.0
	1959	18						15,950.0
Glasshouse Grown	1960	2,400 Sq. ft.						1,800.0
	1959	4,200 Sq. ft.						3,150.0
TOTAL	1960	4,653					\$	5,125,462.0
	1959	4,837					\$	4,951,026.0

FIELD CROPS

Crop	Year	Harvested Acreage	Production		Unit	Value	
			Per Acre	Total		Per Unit	Total
Beans Dry Edible	1960	112	.85	96.0	Ton	150.00	\$ 14,400.00
	1959	174	.75	131.5	"	156.00	20,514.00
Fava	1960	97	.90	87	"	130.00	11,310.00
	1959	93	1.00	93	"	115.00	10,695.00
Barley	1960	2,436	.76	1,857	"	41.00	76,137.00
	1959	3,169	.75	2,377	"	41.60	98,883.00
Flaxseed	1960	2,670	8.75	22,861	Bu.	3.20	73,155.00
	1959	3,479	7.10	24,700	"	3.10	76,510.00
Hay Grain	1960	5,470	1.39	7,603	Ton	24.00	182,472.00
	1959	5,366	1.36	7,298	"	25.00	182,450.00
Other tame	1960	188	1.10	207	"	22.00	4,554.00
	1959	209	1.25	262	"	23.00	6,026.00
Oats	1960	6,347	.58	3,665	"	42.00	153,930.00
	1959	5,469	.69	3,800	"	46.80	177,840.00
Pasture Irrigated	1960	1,211			Acre	38.00	46,018.00
	1959	1,115			"	38.00	42,370.00
Other	1960	34,693			"	3.70	128,364.00
	1959	32,016			"	3.70	118,459.00
Wheat	1960	2	.35	.7	Ton	60.00	42.00
	1959	10	.65	6.5	"	61.00	396.00
TOTAL	1960	53,226					\$ 690,382.00
	1959	51,100					\$ 734,203.00

SEED CROPS

Crop	Year	Harvested Acreage	Production		Unit	Per Unit	Value	
			Per Acre	Total				Total
Brussels Sprouts	1960			450	Lbs.	10.00	\$	4,500.00
	1959			500	"	10.00		5,000.00
Flax	1960	260	8.75	2,277	Bu.	3.25		7,400.00
	1959	119	7.10	848	"	3.25		2,756.00
Vetch	1960	350	.25	87.75	Ton	195.00		17,106.00
	1959	368	.15	57.00	"	150.00		8,550.00
TOTAL	1960	610					\$	29,006.00
	1959	607					\$	16,306.00

FRUIT AND NUT CROPS

Crop	Year	Harvested Acreage	Production		Unit	Per Unit	Value	
			Per Acre	Total				Total
Apples Fresh Mkt.	1960	92	2.15	198	Ton	158.00	\$	31,284.00
	1959	108	2.00	216	"	153.00		33,048.00
Processing	1960			6.3	"	40.00		252.00
	1959			39.0	"	22.50		878.00
Apricots, dry	1960	14	.23	3.2	"	725.00		2,320.00
	1959	12	.35	4.2	"	975.00		4,095.00
Bushberries	1960	10	2.25	22.5	"	755.00		16,988.00
	1959	10	3.60	36.0	"	778.00		28,000.00
Grapes	1960	7	1.50	10.5	"	85.00		893.00
	1959	20	.60	12.0	"	57.00		684.00
Pears	1960	27	3.70	100	"	80.00		8,000.00
	1959	25	3.25	81	"	75.00		6,075.00
Prunes	1960	40	1.52	61	"	326.00		19,886.00
	1959	41	2.09	86	"	314.00		27,004.00
Strawberries Fresh Mkt.	1960	53	6.86	364	"	406.00		147,784.00
	1959	51	4.57	235	"	380.00		89,300.00
Processing	1960			160	"	335.00		53,600.00
	1959			204	"	280.00		57,120.00
Walnuts	1960	105	.46	48	"	520.00		24,960.00
	1959	113	.38	43	"	500.00		21,500.00
Miscellaneous	1960	2.0						1,308.00
	1959	2.0						2,011.00
TOTAL	1960	350					\$	307,275.00
	1959	382					\$	268,715.00

FLORAL AND NURSERY CROPS OUTDOOR GROWN

Item	Year	Prod. Area Acres	Production	Unit	Per Unit	Value	
							Total
Acacia	1960	95	9,500	Tree	12.50	\$	118,750.00
	1959	95	9,500	"	12.00		114,000.00
Agapanthus	1960	6	18,000	Dz.	.75		13,500.00
	1959	5	14,000	"	.75		10,500.00
Asters	1960	12	2,520,000	Bloom	.032		80,640.00
	1959	17	3,400,000	"	.033		112,200.00
Calla Lily	1960	27	172,330	Dz.	.630		108,665.00
	1959	34	208,750	"	.706		147,500.00
Chrysanthemum Total	1960	81					661,880.00
	1959	88					869,544.00
Standard	1960	18.5	884,400	Bloom	.11		97,284.00
	1959	16.8	806,400	"	.13		104,832.00
Medium	1960	24.5	2,931,355	Bloom	.080		234,508.00
	1959	30.0	3,585,860	"	.086		308,231.00
Pompons	1960	38.0	827,201	Bunch	.40		330,088.00
	1959	41.4	895,450	"	.51		456,481.00
Cut Foliage	1960	88					171,450.00
	1959	68					99,700.00
Gladiolus	1960	15	78,000	Dz.	.65		50,700.00
	1959	17	88,400	"	.71		62,764.00
Heather	1960	162	777,600	Bunch	.40		311,040.00
	1959	194	931,200	"	.40		372,480.00
Iris	1960	28	91,000	Dz.	.45		40,950.00
	1959	20	65,000	"	.47		30,550.00
Marguerites	1960	57	997,500	Bunch	.20		199,500.00
	1959	49	857,500	"	.20		171,500.00
Narcissus	1960	40	2,800,000	Bloom	.015		42,400.00
	1959	38	2,660,000	"	.015		39,900.00

FLORAL AND NURSERY CROPS OUTDOOR GROWN (cont'd)

Item	Year	Prod. Area Acres	Production	Unit	Per Unit	Value	
							Total
Shasta Daisy	1960	53	7,420,000	Bloom	.025	\$	185,500.00
	1959	61	8,540,000	"	.021		179,340.00
Stock	1960	95	427,500	Dz.	.475		203,062.00
	1959	139	625,000	"	.465		290,858.00
Strawflowers	1960	92	25,760	Box	12.52		322,500.00
	1959	103	34,505	"	9.60		331,249.00
Violets	1960	16	96,000	Dz.	1.25		120,000.00
	1959	16	96,000	"	1.25		120,000.00
Misc. Flowers	1960	45					85,500.00
	1959	51					91,800.00
Bulbs	1960		970,000	Bulbs			79,125.00
	1959		962,000	"			88,700.00
Herbaceous Perennials	1960	9	1,230,000	Plants	.088		108,600.00
	1959	9	1,395,000	"	.075		104,400.00
TOTAL	1960	921				\$	2,903,762.00
	1959	1,004				\$	3,236,985.00

FLORAL AND NURSERY CROPS GLASSHOUSE GROWN

Item	Year	Prod. Area Sq. Ft.	Production	Unit	Value	
					Per Unit	Total
<u>Cut Flowers</u>						
Carnations	1960	1,680,169	35,421,650	Bloom	.050	\$ 1,771,082.00
	1959	1,605,139	33,486,989	"	.053	1,774,810.00
Chrysanthemums Total	1960	485,200	4,299,300	Bloom	.103	444,457.00
	1959	576,800	3,946,550	"	.141	559,583.00
Standard	1960	166,420	1,438,000	Bloom	.13	186,940.00
	1959	289,300	2,509,250	"	.16	401,480.00
Medium	1960	318,780	2,861,300	Bloom	.09	257,517.00
	1959	287,460	1,437,300	"	.11	158,103.00
Fern	1960	328,792	2,301,544	Bunch	.12	276,185.00
	1959	358,032	2,327,208	"	.10	232,721.00
Gardenias	1960	135,800	2,085,880	Bloom	.0866	180,637.00
	1959	135,800	2,145,640	"	.0825	177,015.00
Iris	1960	9,250	13,875	Dz.	.625	8,672.00
	1959	22,750	31,850	"	.650	20,703.00
Orchids	1960	217,275	586,642	Bloom	.70	410,649.00
	1959	220,825	607,269	"	.65	394,725.00
Roses	1960	336,775	6,314,531	Bloom	.063	397,815.00
	1959	336,775	6,264,015	"	.063	394,633.00
Snapdragon	1960	22,725	17,044	Bunch	1.10	18,748.00
	1959	91,945	68,958	"	1.20	82,750.00
Sweet Peas	1960	13,050	78,300	Dz.	.18	14,094.00
	1959	20,830	124,980	"	.16	19,997.00
Miscellaneous Cut Flowers	1960	66,300		Sq. Ft.	.98	64,970.00
	1959	59,385		"	.96	56,990.00

FLORAL AND NURSERY CROPS GLASSHOUSE GROWN (cont'd)

Item	Year	Prod. Area Sq. Ft.	Production	Unit	Per Unit	Value		
							Total	
Flowering	1960	869,240	1,899,083	Plants	.823	\$	1,562,713.00	
Pot Plants	1959	875,790	1,696,910	"	.844		1,432,121.00	
Propagated								
Bedding	1960	45,777	22,475	Flats	2.23		50,200.00	
Plants	1959	47,300	27,550	"	2.02		55,585.00	
Ornamental	1960	434,423	13,245,750	Plants	.062		818,900.00	
Nrsy. Stock	1959	376,252	11,215,750	"	.056		625,040.00	
TOTAL								\$ 6,019,122.00
								\$ 5,826,673.00
Total Glass and plastic area 4,566,254 sq. ft.								
157 glass or plastic ranges 235 growers								
TOTAL VALUE, ALL FLORAL AND NURSERY CROPS					1960		\$ 8,922,884.00	
					1959		\$ 9,063,658.00	

LIVESTOCK AND POULTRY

Item	Year	Production		Unit	Per Unit	Value	
		No. of Head	Total Liveweight				Total
Cattle and Calves	1960	2,883	20,574	Cwt.	20.70	\$	425,470.00
	1959	3,466	26,316	"	23.56		619,934.00
Milkers sold	1960	963		Head	215.00		207,045.00
	1959	1,094		"	245.00		268,030.00
Sheep and Lambs	1960	1,645	1,769	Cwt.	17.07		30,207.00
	1959	1,331	1,361	"	17.89		24,349.00
Hogs and Pigs	1960	22,546	50,168	Cwt.	17.26		866,225.00
	1959	23,584	52,291	"	16.97		887,300.00
Broilers and Fryers	1960	800	1,800	Lb.	.201		362.00
	1959	1,015	2,030	"	.196		398.00
Other Chickens	1960	3,750	15,000	Lb.	.092		1,387.00
	1959	4,960	19,840	"	.085		1,686.00
Ducks	1960	-					-
	1959	92,790	516,756	Lb.	.34		175,697.00
Pigeons	1960	3,900	3,900	Lb.	.85		3,315.00
	1959	3,600	3,600	"	.85		3,060.00
Rabbits	1960	4,352	21,700	Lb.	.264		5,745.00
	1959	4,544	22,720	"	.260		5,907.00
TOTAL	1960					\$	1,715,453.00
	1959					\$	1,986,361.00

LIVESTOCK, POULTRY AND APIARY PRODUCTS

Item	Year	Production	Unit	Value	
				Per Unit	Total
Milk, Market	1960	153,363	Cwt.	4.52	\$ 693,200.00
	1959	143,121	"	4.85	694,137.00
Milk, Manufacturing	1960	19,691	Cwt.	2.78	54,741.00
	1959	16,702	"	3.08	51,442.00
Wool	1960	14,542	Lb.	.40	5,816.00
	1959	15,008	"	.35	5,253.00
Eggs Chicken	1960	71,284	Dz.	.318	22,668.00
	1959	111,184	"	.310	34,467.00
Duck	1960	---			---
	1959	15,000	Dz.	.50	7,500.00
Honey	1960	29,210	Lb.	.085	2,482.00
	1959	47,500	"	.08	3,800.00
Beeswax	1960	4,885	Lb.	.40	1,954.00
	1959	2,375	"	.40	950.00
TOTAL	1960				\$ 780,861.00
	1959				\$ 797,549.00

JAN. 1 INVENTORIES OF LIVESTOCK AND POULTRY 1960--1961

Item	Jan. 1, 1960	Jan. 1, 1961
Cattle and Calves		
All	8,836	9,248
Milk cow 2 yrs. & over	1,650	1,719
Sheep and Lambs		
All	1,887	1,513
Stock Sheep	650	500
Hogs and Pigs	12,739	12,178
Horses	65	70
Hens and Pullets	12,519	7,100

RECAPITULATION
PRODUCTION VALUES

	1959	1960
Vegetable Crops	\$ 4,951,026.00	\$ 5,125,462.00
Flower & Nursery Crops	9,063,658.00	8,922,884.00
Field Crops	734,203.00	690,382.00
Seed Crops	16,306.00	29,006.00
Fruit & Nut Crops	268,715.00	307,275.00
Livestock & Poultry	1,986,361.00	1,715,453.00
Livestock, Poultry & Apiary Products	797,549.00	780,861.00
TOTAL	\$17,817,818.00	\$17,571,323.00
Crop Value of retail ornamental nursery sales		\$ 1,360,000.00